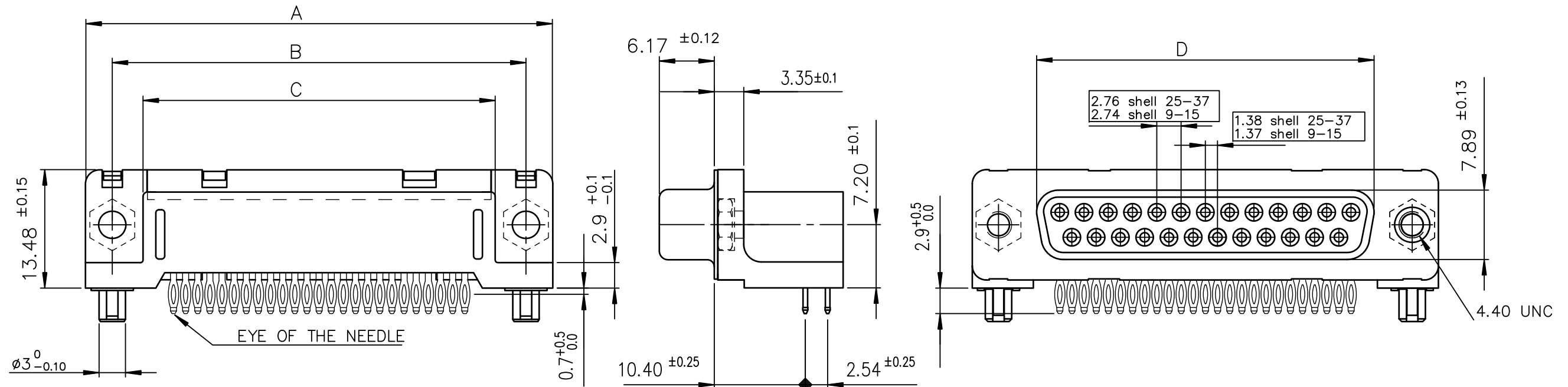
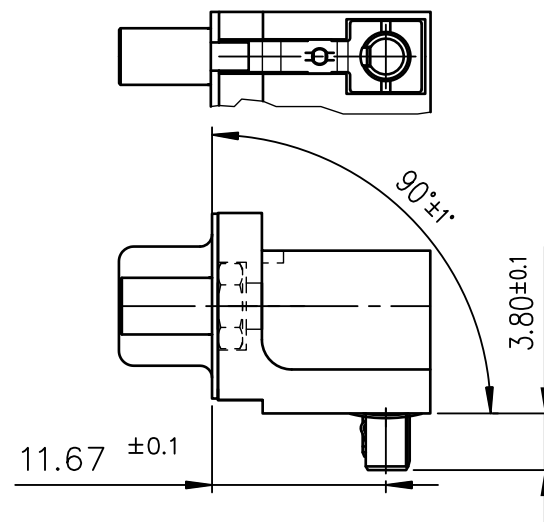


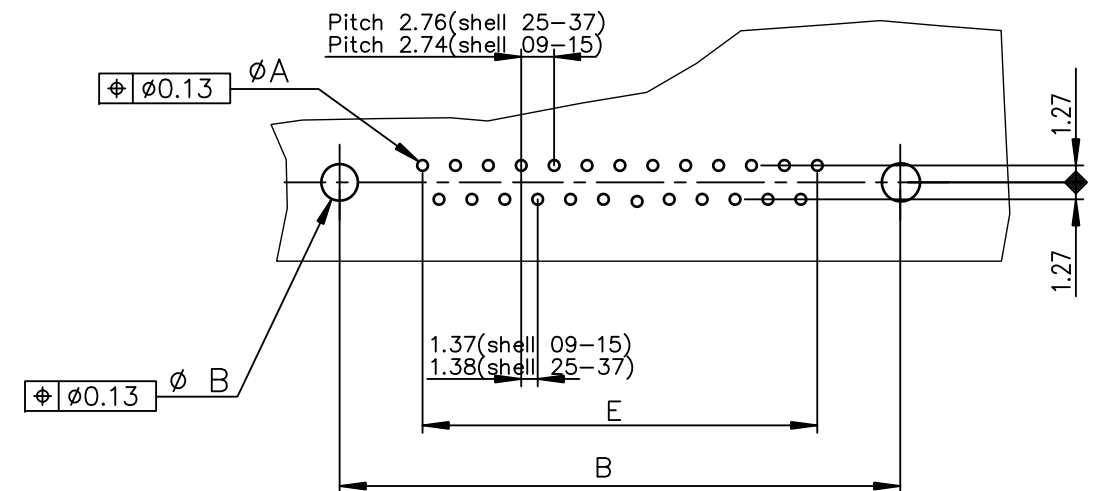
view shown without plastic pin and grounding



Detail of grounding strip



PC card drilling dimensions(after plating)
(thickness 1.60 ±0.20)



TIN LEAD PART NUMBER

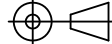
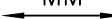

SHELL	A±0.38	B±0.12	C±0.10	D±0.25	E±0.07	PART NUMBER	PART NUMBER
09	30.81	24.99	18.00	16.21	10.96	D09S81C6GX8C	D09S81C7GX8C
15	39.14	33.32	26.32	24.54	19.18	D15S81C6GX8C	D15S81C7GX8C
25	53.03	47.04	40.04	38.25	33.12	--	--
37	69.32	63.50	56.50	54.71	49.68	--	--

LEAD FREE PART NUMBER

SHELL	A±0.38	B±0.12	C±0.10	D±0.25	E±0.07	PART NUMBER	PART NUMBER
09	30.81	24.99	18.00	16.21	10.96	D09S81C6GX8CLF	D09S81C7GX8CLF
15	39.14	33.32	26.32	24.54	19.18	D15S81C6GX8CLF	D15S81C7GX8CLF
25	53.03	47.04	40.04	38.25	33.12	--	--
37	69.32	63.50	56.50	54.71	49.68	--	--

GENERAL CHARACTERISTICS AND ROHS INFORMATIONS:

SEE DRAWING C01-8646-0001

mat'l. code —				surface ISO 1302 ✓		tolerance ISO 406 ISO 1101		projection 		product family D—SUB																																																																																																																																																																																																																																																																																																																																																																																																																																																																																																																																																																																																																																																																																																																																																																																																																																																																																																																																																																																																																																																																																																																																																																																																																																										
ltr	ecn no	dr	date	tolerances unless otherwise specified							title																																																																																																																																																																																																																																																																																																																																																																																																																																																																																																																																																																																																																																																																																																																																																																																																																																																																																																																																																																																																																																																																																																																																																																																																																																									
F	ELX-I-18050	MP	2014/06/23	angles	linear	.0±.01					FEMALE CONNECTOR DELTA-D EUROPE RIGHT ANGLED PRESS FIT																																																																																																																																																																																																																																																																																																																																																																																																																																																																																																																																																																																																																																																																																																																																																																																																																																																																																																																																																																																																																																																																																																																																																																																																																																									
						.00±.01																																																																																																																																																																																																																																																																																																																																																																																																																																																																																																																																																																																																																																																																																																																																																																																																																																																																																																																																																																																																																																																																																																																																																																																																																																														
						.000±.01																																																																																																																																																																																																																																																																																																																																																																																																																																																																																																																																																																																																																																																																																																																																																																																																																																																																																																																																																																																																																																																																																																																																																																																																																																														
				0°±2°						scale 2:1																																																																																																																																																																																																																																																																																																																																																																																																																																																																																																																																																																																																																																																																																																																																																																																																																																																																																																																																																																																																																																																																																																																																																																																																																																										
				dr	JOUBERT		1999/05/18			dwg no					sheet 1 of 1					size																																																																																																																																																																																																																																																																																																																																																																																																																																																																																																																																																																																																																																																																																																																																																																																																																																																																																																																																																																																																																																																																																																																																																																																																																																
				engr	MITHUN PAUL		2014/06/23			C01—8646—0678					A3																																																																																																																																																																																																																																																																																																																																																																																																																																																																																																																																																																																																																																																																																																																																																																																																																																																																																																																																																																																																																																																																																																																																																																																																																																					
				chr	ALIAS BABU		2014/06/23																																																																																																																																																																																																																																																																																																																																																																																																																																																																																																																																																																																																																																																																																																																																																																																																																																																																																																																																																																																																																																																																																																																																																																																																																																													
				appd	BIJU K PAUL		2014/06/23																																																																																																																																																																																																																																																																																																																																																																																																																																																																																																																																																																																																																																																																																																																																																																																																																																																																																																																																																																																																																																																																																																																																																																																																																																													
sheet index		revision sheet		F	1																																																																																																																																																																																																																																																																																																																																																																																																																																																																																																																																																																																																																																																																																																																																																																																																																																																																																																																																																																																																																																																																																																																																																																																																																																															</

Mouser Electronics

Authorized Distributor

Click to View Pricing, Inventory, Delivery & Lifecycle Information:

[Amphenol:](#)

[D15S81C6GX8CLF](#) [D09S81C6GX8CLF](#)