

1

2

3

4

LEAD FREE PART NUMBER

DA7WS343A40LF	ø 2.8	ø 3.1
DA7WS343A40LF	ø 2.8	ø 3.1
DA7WS300A30LF	ø 2.0	ø 2.4
DA7WS343A30LF	ø 2.0	ø 2.4
PART NUMBER	ø A	ø B ± 0.1

REFERENCE SPECIFICATIONS

-NFC 93425 (in compliance with HE 507)

PHYSICAL CHARACTERISTICS

-INSULATOR MATERIAL: THERMOPLASTIC / STANDARD MATERIAL

-CONTACT MATERIAL: PHOSPHOR BRONZE(FEMALE SIGNAL CONTACT)

BRASS(PIN SIGNAL CONTACT)

BRASS (POWERS CONTACT)

-ACCESSORIES: BRASS TIN LEAD OVER NICKEL

-SHELLS: STEEL BRIGHT TIN LEAD

ELECTRICAL CHARACTERISTICS

-NOMINAL CURRENT: 7.5A (STANDARD CONDITIONS)

-CONTACT RESISTANCE: <7.3mOhm

-CONTACT/CONTACT : 1000 V

-CONTACT/GROUND : 1200 V

-INSULATION RESISTANCE: 5000 Mohm

ENVIRONMENTAL CHARACTERISTICS

- CLIMATIC CATEGORY: 55/125/21

TEMPERATURE RANGE -55°C TO +125°C

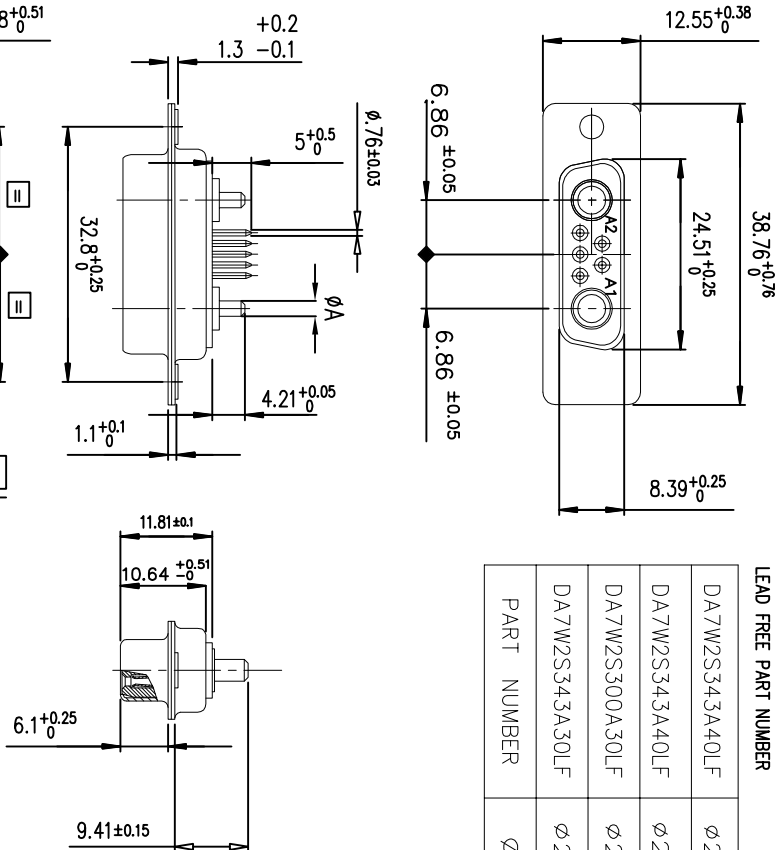
DAMP HEAT STEADY STATE 21 DAYS

SALT SPRAY 24 HOURS

NOTE ROHS INFORMATION

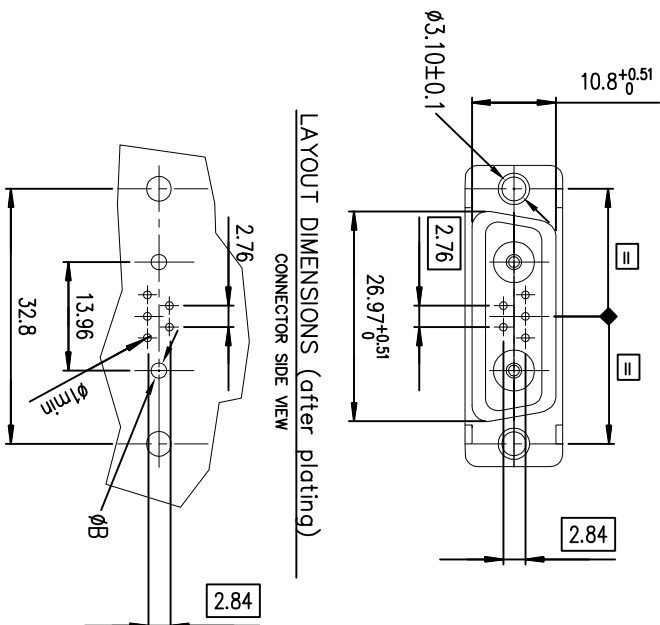
- The "LF" products meet european union Directives and other country regulations as described in GS-22-008.
- The housing will withstand exposure to 260°C peak temperature for 3.5 seconds in a wave solder application with a 1.6mm minimum thick circuit board. See application notes/procedures if they are available.
- Termination plating spec:
 - Signal contacts: Ni + Gold
 - Power contacts: 1.27µm Nickel mini, 2.5 to 7.5 µm Sn (pure bright)
 - Shell plating : 2 to 4µmCu + 3 to 10µmm Sn(pure bright)
 - Accessories: Sn pure bright
- Packaging spec: See GS-14-920

European Views



LAYOUT DIMENSIONS (after plating)

CONNECTOR SIDE VIEW



www.fciconnect.com

Dr	M. PESSON	2005/12/01	ANGULAR	0.X	±0.1	size	A3	1.5
Eng	PESSON	2005/12/01	LINEAR	0.XX	±0.1	ECN	F10-0032	
Chr	LEGARE	2005/12/01	0.XX	±2+				
Appr	LEGARE	2005/12/01	Product family	D-SUB	Spec ref	-		



SOCKET CONNECTOR WITH STR
CONTACTS AND 2 POWERS 40A

C01-8639-2322
C

Mouser Electronics

Authorized Distributor

Click to View Pricing, Inventory, Delivery & Lifecycle Information:

[Amphenol:](#)

[DA7W2S300A30LF](#) [DA7W2S300A40LF](#)