

REFERENCE SPECIFICATIONS

-NFC 93425 (in compliance with HE 507)

PHYSICAL CHARACTERISTICS

- INSULATOR MATERIAL: THERMOPLASTIC ,UL94V0
- ACCESSORIES: BRASS
- SHELLS: STEEL

ELECTRICAL CHARACTERISTICS

- CONTACT/CONTACT : >=1000 V
- CONTACT/GROUND : >=1200 V
- INSULATION RESISTANCE: >=5000 MOhms

ENVIRONMENTAL CHARACTERISTICS

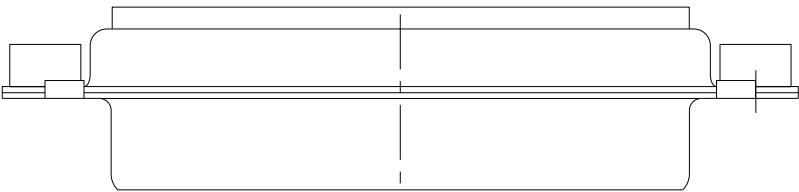
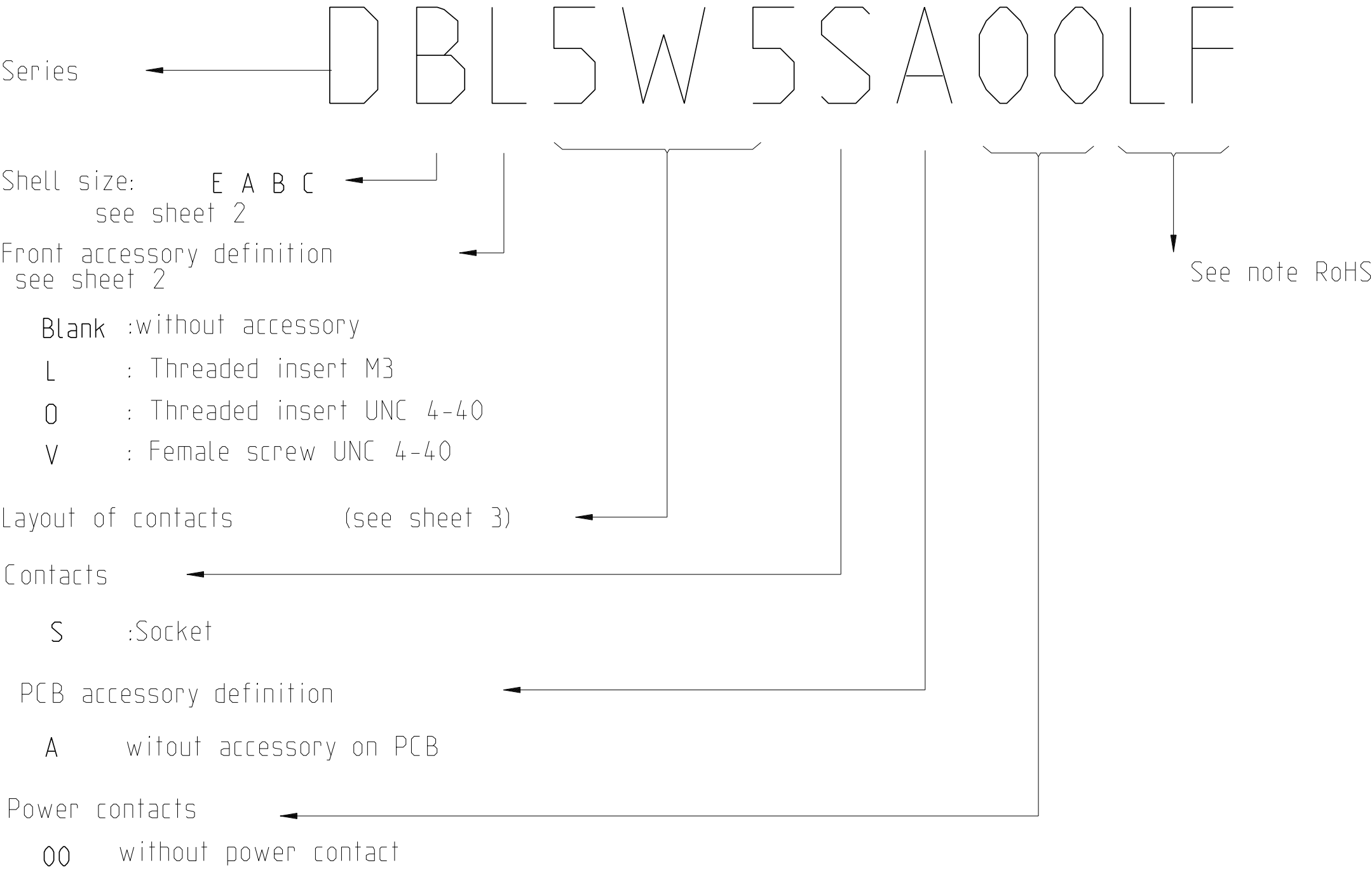
- CLIMATIC CATEGORY: 55/125/21
- TEMPERATURE RANGE -55°C TO +125°C
- DAMP HEAT STEADY STATE 21 DAYS
- SALT SPRAY 24 HOURS




MECHANICAL CHARACTERISTICS

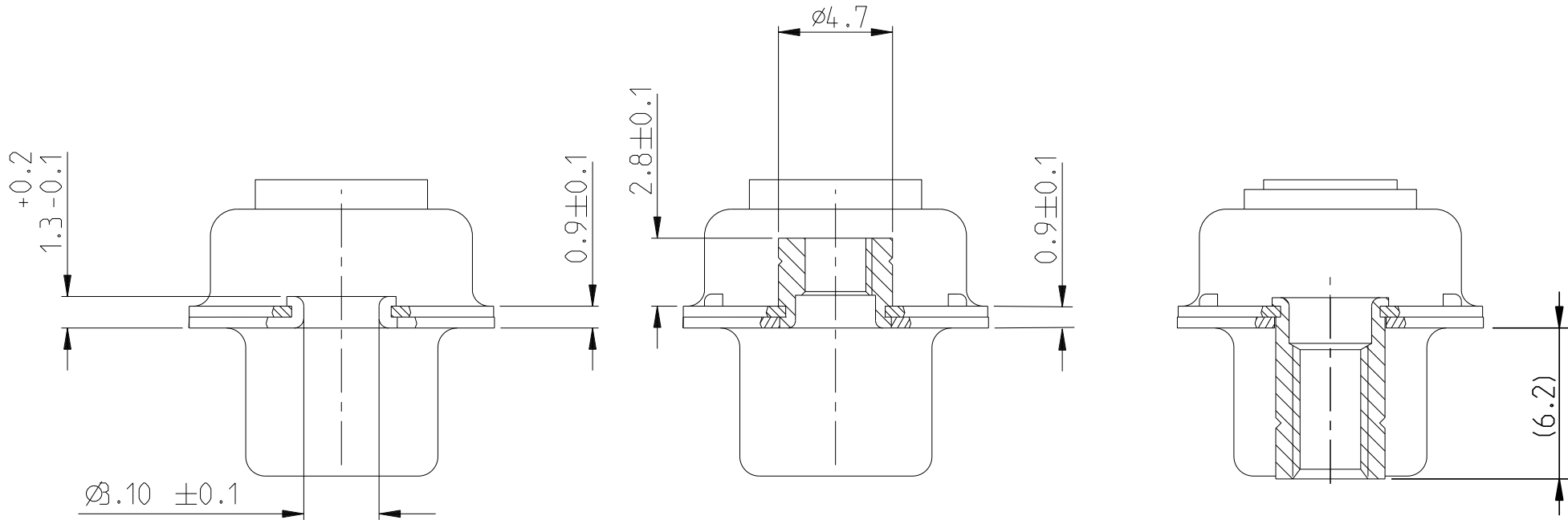
- RETENTION AGAINST TORQUE:
 - Threaded insert: 0.7 N.m minimum
 - Female screw : 0.5 N.m minimum

NOTE ROHS INFORMATION

- The “LF” products meet european union Directives and other country regulations as described in GS-22-008.
- Shell plating :2 to 4µm Cu+ Ni + 3 to 10µmm Sn(pure bright)
- Accessories: Sn pure bright + nickel
- Packaging spec: See GS-14-920



spec ref				dr	Pro Engineer 1	2015/06/16			size	A2	scale	2:1		
tolerance std	TOLERANCES UNLESS OTHERWISE SPECIFIED			eng	J Dalibard	2016/09/13			ecn no	ECN-ELX-F-24942-1				
				chr	J Dalibard	2016/09/19								
				appr	Aymeric Soudy	2016/09/20	product family		-	rel level		Released		
surface		linear	0.X	±0.3	Amphenol FCI	title	SUB FEMALE DW			dwg no	C01-8639-2311		rev	E
			0.XX	±0.10										
			0.XXX	±0.05										
		angular	0°	±2°										





FRONT ACCESSORY	Blank without	L insert M3 O insert UNC 4.40	V Female screw UNC 4-40
PCB ACCESSORIES	A without	A without	A without

PART NUMBER	FRONT ACCESSORY	PCB ACCESSORY
D*W xSA00LF	WITHOUT	WITHOUT
D*VxW xSA00LF	Female screw UNC 4-40	WITHOUT
D*LxW xSA00LF	Insert M3	WITHOUT
D*OxW xSA00LF	Insert UNC 4-40	WITHOUT

shell size LAYOUTS

E	2V2
A	3V3
A	3W3
B	5W5
C	8W8

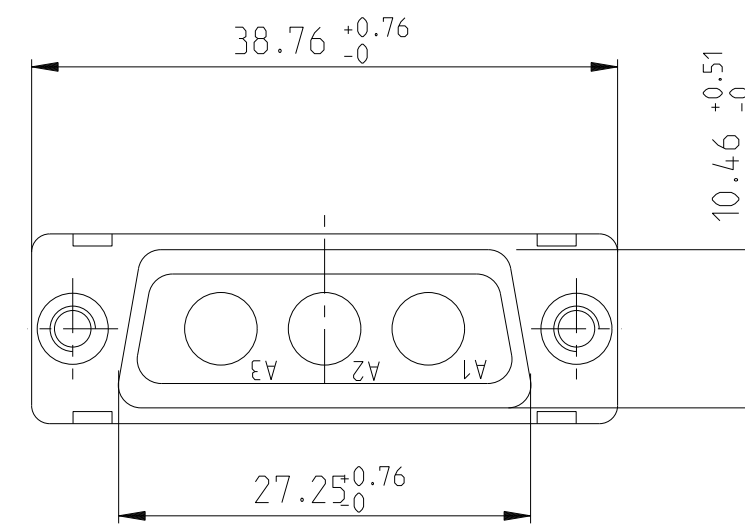
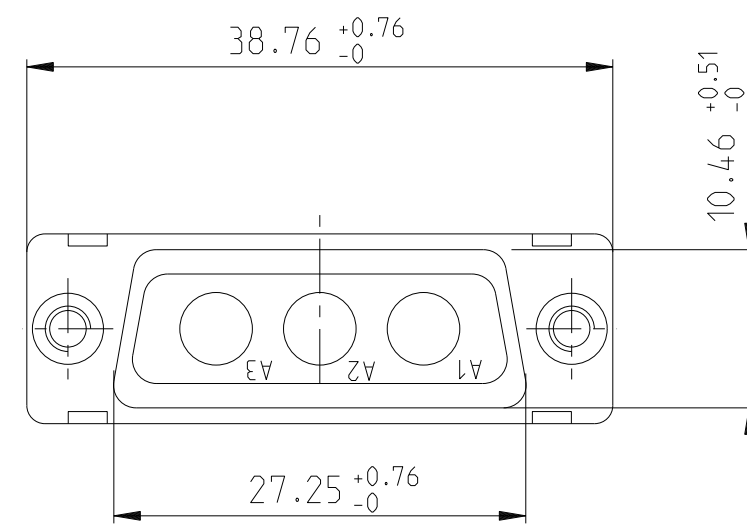
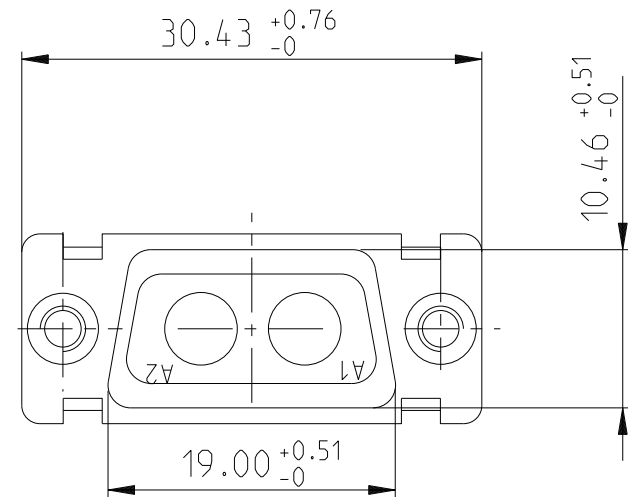
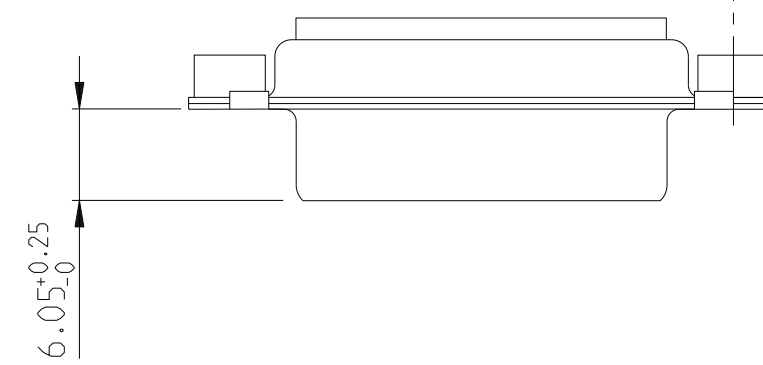
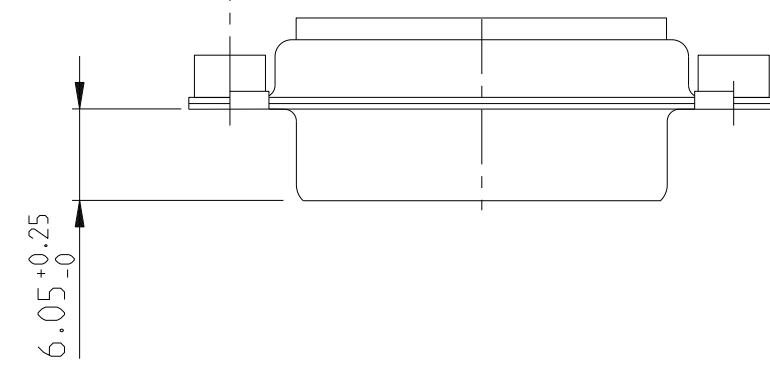
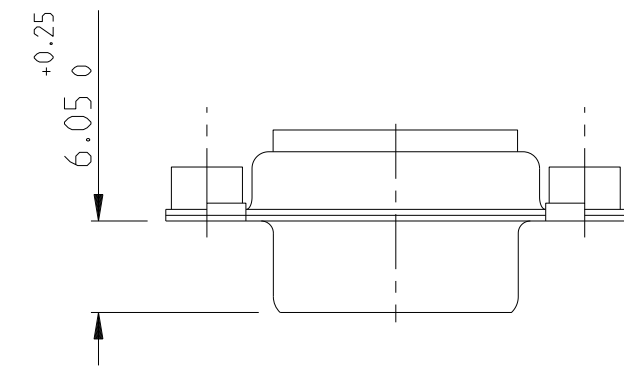
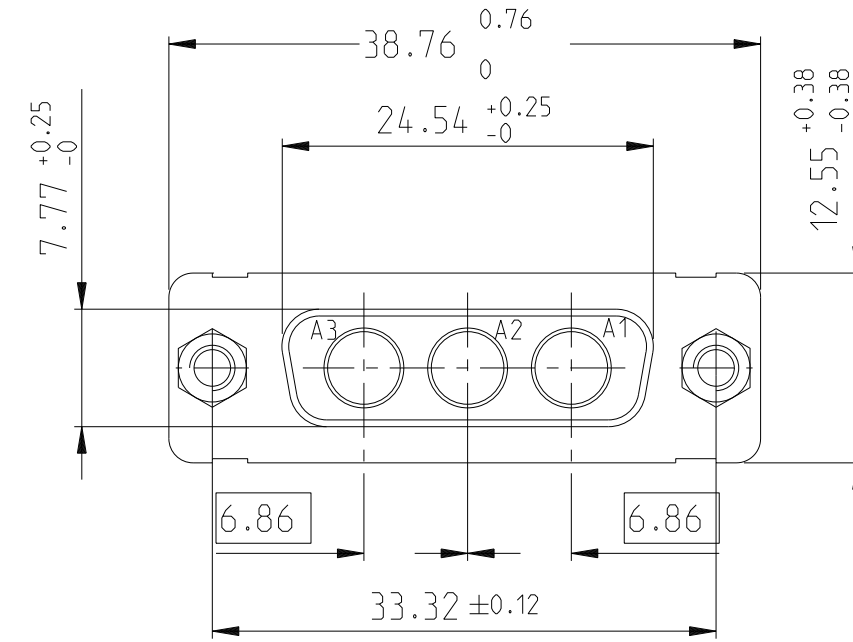
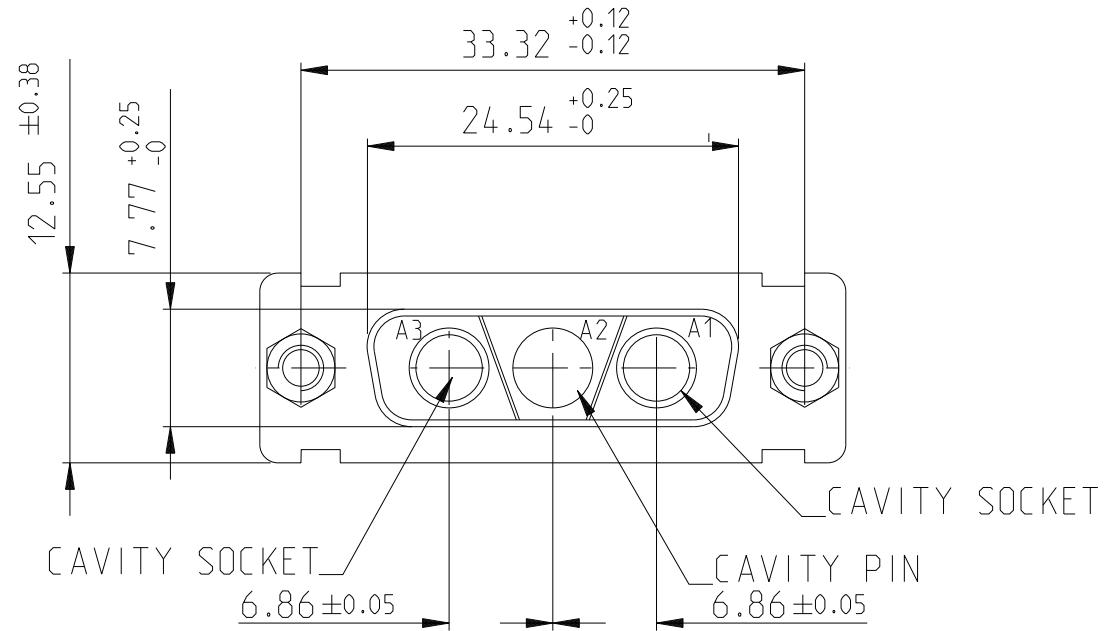
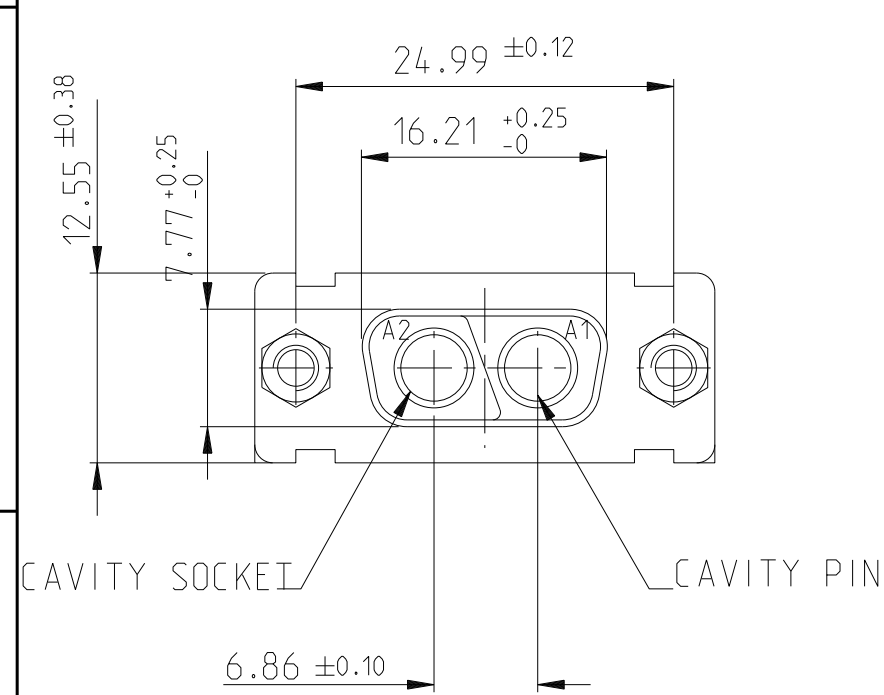
SCALE:4

spec ref				dr	Pro Engineer 1	2015/06/16			size	A2	scale	2:1	
tolerance std				eng	J Dalibard	2016/09/13			ecn no		ECN-ELX-F-24942-1		
TOLERANCES UNLESS OTHERWISE SPECIFIED				chr	J Dalibard	2016/09/19			rel level		Released		
				appr	Aymeric Soudy	2016/09/20			product family				
surface	linear	0.X	±0.3	Amphenol FCI	title SUB FEMALE DW				dwg no	C01-8639-2311		rev	E
		0.XX	±0.10										
		0.XXX	±0.05										
		angular	0°										
				cat. no.				Product - Customer Drw				sheet 2 of 4	

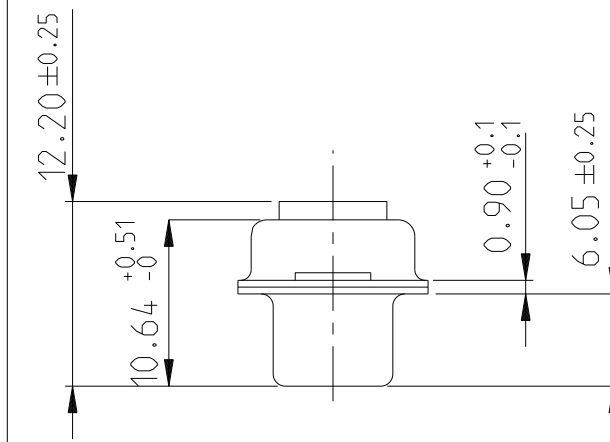
2V2

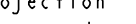

3V3

3W3

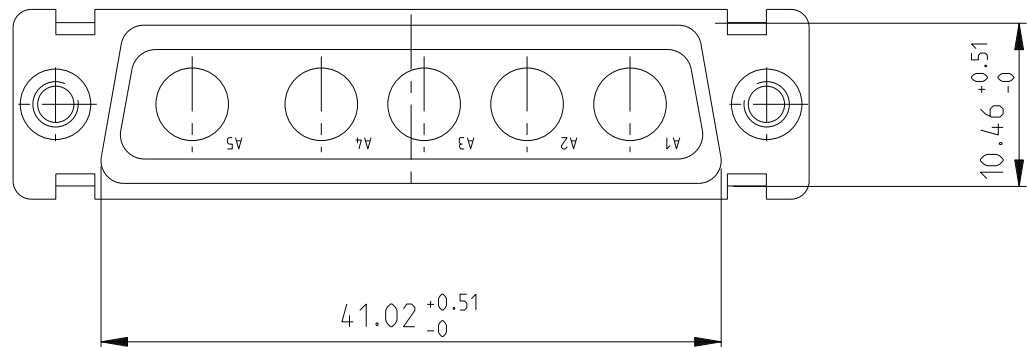
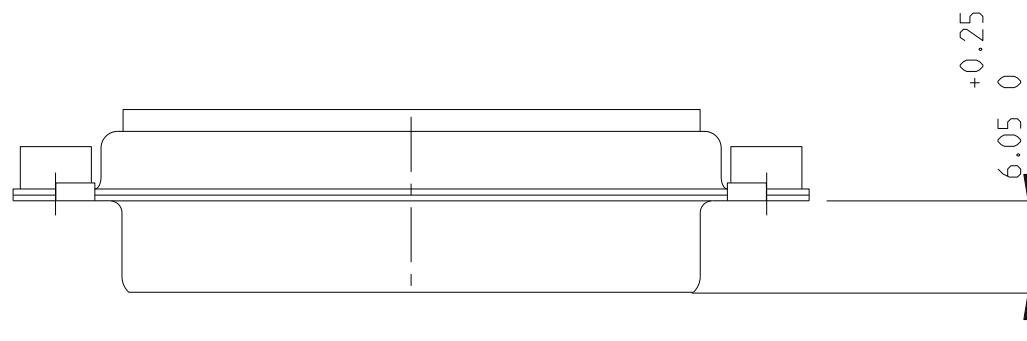
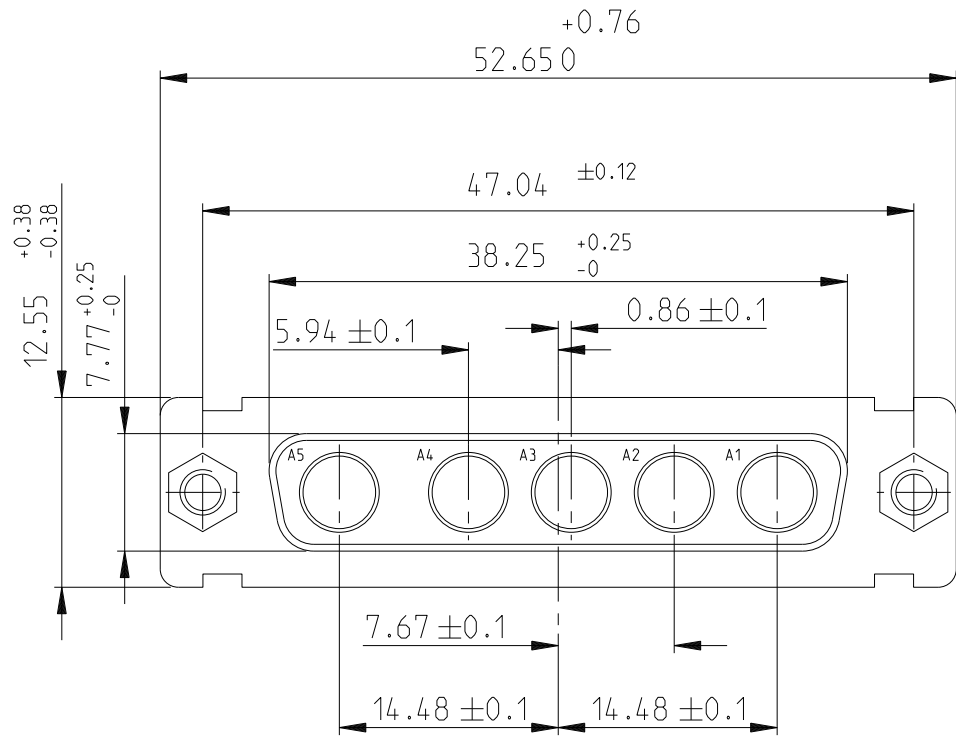


SIDE VIEW FOR
LAYOUTS: E A B C

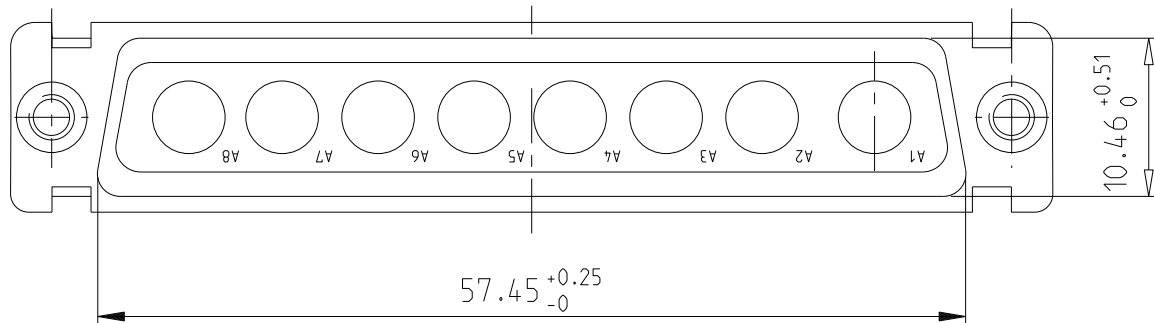
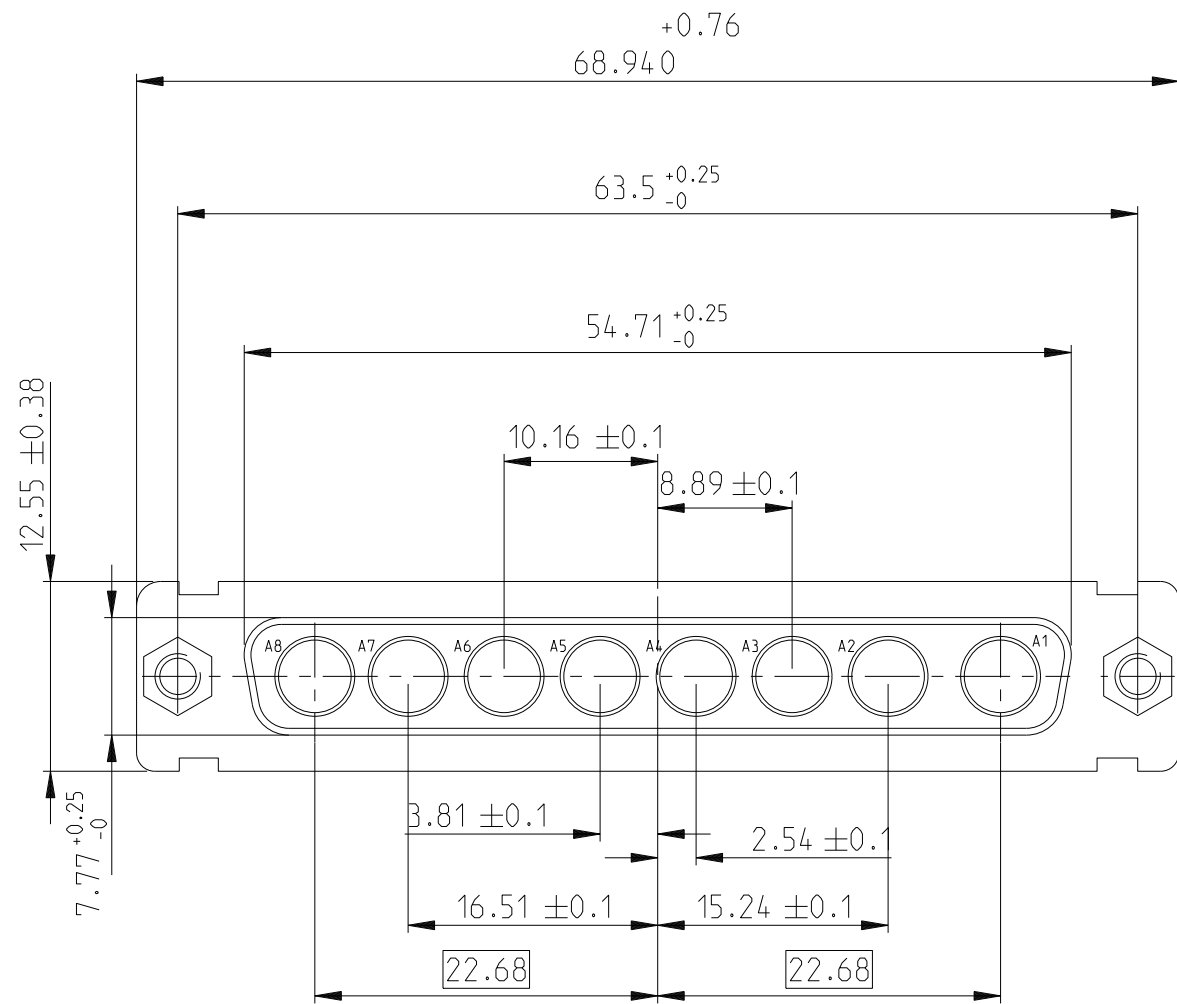


spec ref				dr		Pro Engineer 1		2015/06/16		projection		mm		size		A2		scale		2:1	
tolerance std				eng		J Dalibard		2016/09/13						ecn no		ECN-ELX-F-24942-1					
TOLERANCES UNLESS OTHERWISE SPECIFIED				chr		J Dalibard		2016/09/19						rel level		Released					
				appr		Aymeric Soudy		2016/09/20						product family							
surface		linear	0.X		±0.3		Amphenol FCI		title		SUB FEMALE DW		dwg no		C01-8639-2311		rev		E		
			0.XX		±0.10																
			0.XXX		±0.05																
			angular		0°		±2°		cat. no.		-		Product - Customer Drw		sheet 3 of 4						

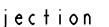

5W 5



8W 8



spec ref			
tolerance std	TOLERANCES UNLESS OTHERWISE SPECIFIED		
surface	linear	0.X ±0.3	0.XX ±0.10
		0.XXX ±0.05	0° ±2°
	angular	0°	±2°

dr	Pro Engineer 1	2015/06/16			size	A2	scale	2:1			
eng	J Dalibard	2016/09/13			ecn no	ECN-ELX-F-24942-1					
chr	J Dalibard	2016/09/19				Released					
appr	Aymeric Soudy	2016/09/20	product family		-	rel level					
Amphenol FCI			title			SUB FEMALE DW		dwg no	C01-8639-2311	rev	E
			full power without contact								
			cat. no.	-	Product - Customer Drw				sheet 4 of 4		

Mouser Electronics

Authorized Distributor

Click to View Pricing, Inventory, Delivery & Lifecycle Information:

[Amphenol:](#)

[DAL3W3SA00LF](#) [DAO3W3SA00LF](#) [DAV3W3SA00LF](#) [DBV13W3SA00LF](#) [DCO8W8SA00LF](#) [DCV8W8SA00LF](#)
[DAO3V3SA00LF](#) [DBL5W5SA00LF](#) [DCL8W8SA00LF](#) [DBO5W5SA00LF](#) [DEL2V2SA00LF](#) [DEO2V2SA00LF](#)
[DAL3V3SA00LF](#)