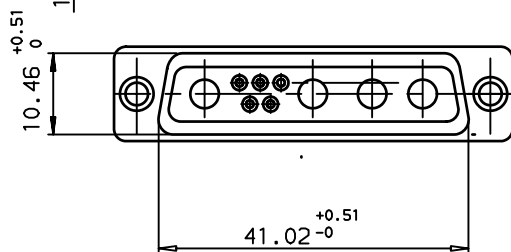
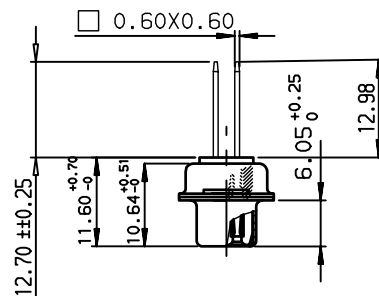
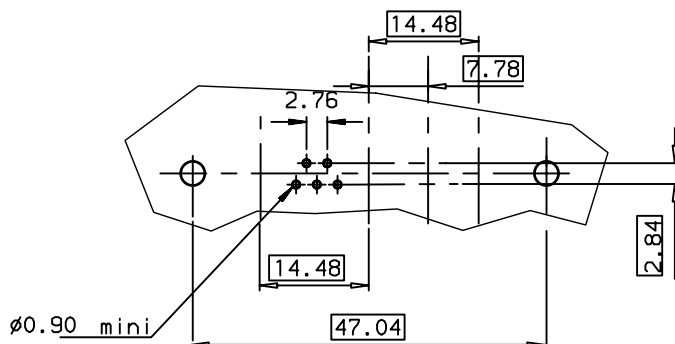


D



LAYOUT DIMENSIONS (after plating)
CONNECTOR SIDE VIEW


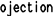




PART NUMBER

GENERAL CHARACTERISTICS AND ROHS INFORMATIONS:	
SEE DRAWING C01-8639-0000	

European Views

rev	ecn no	dr	date
A	LS05-0106	MPE	2005/12/01
B	LS06-0095	LGO	2006/06/16
C	LS07-0097	MPE	2007/04/06
-	-	-	-
-	-	-	-
-	-	-	-
-	-	-	-

www.fciconnect.com			surface ISO 1302 		tolerance std ISO 406 ISO 1101		projection 		mm 		
			TOLERANCES UNLESS OTHERWISE SPECIFIED								
Dr	PESSON	2005/12/01	ANGULAR	LINEAR	0.X	±0.1	size A3	Scale 1.5			
Eng	PESSON	2005/12/01			0.XX	±0.1					
Chr	LEGARE	2005/12/01			0.XX ±2"	0.XXX		±0.1	ECN LS07-0097		
Appr	LEGARE	2005/12/01	Product family				D-SUB		Spec ref -		
			SOCKET CONNECTOR WITH WIRE WRAP				dwg no C01-8639-2260			Rev.	
										C	
catalog no			-				CUSTOMER		sheet 1 of 1		

Mouser Electronics

Authorized Distributor

Click to View Pricing, Inventory, Delivery & Lifecycle Information:

[Amphenol:](#)

[DB9W4S400A00LF](#)