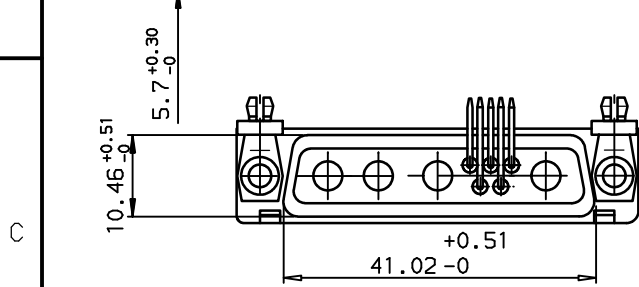
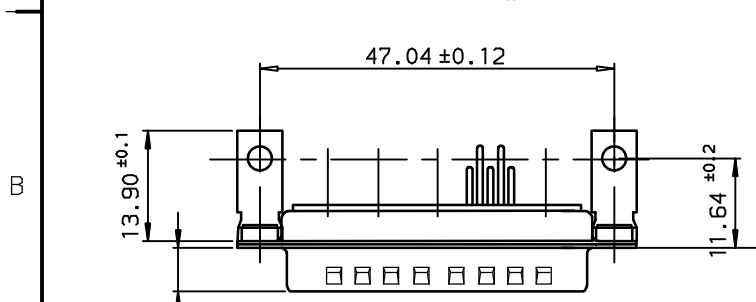
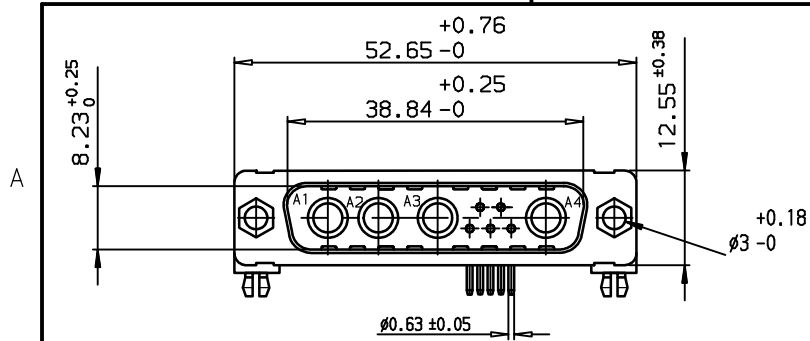
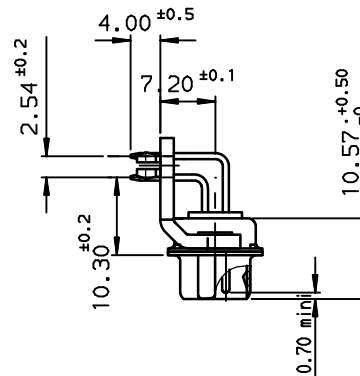




Copyright FCI.



LAYOUT DIMENSIONS (after plating)
CONNECTOR SIDE VIEW



TIN LEAD PART NUMBER

DB9W4P500G00

PART NUMBER

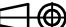


LEAD FREE PART NUMBER

DB9W4P500G00LF

PART NUMBER

GENERAL CHARACTERISTICS AND ROHS INFORMATIONS:
SEE DRAWING C01-8639-0003

European Views

www.fciconnect.com			surface ISO 1302		tolerance std ISO 406 ISO 1101		projection 		mm 		
			TOLERANCES UNLESS OTHERWISE SPECIFIED								
Dr	JOUBERT	1996/08/27	ANGULAR	LINEAR	0.X	±0.1	size	A3	Scale	1.5	
Eng	PESSON	1996/08/27			0.XX	±0.1					
Chr	LEGARE	1996/08/27	0.XX' ±2"		0.XXX	±0.1	ECN LS06-0095				
Appr	LEGARE	1996/08/27	Product family			D-SUB	Spec ref -				
			title PIN CONNECTOR RIGHT ANGLED				dwg no C01-8639-0491			Rev. D	
catalog no			-				CUSTOMER sheet 1 of 1				

rev	ecn no	dr	date
B	-	BAR	2003/10/22
C	LS05-001	MPE	2005/03/07
D	LS06-0095	LGO	2006/07/19
-	-	-	-
-	-	-	-
-	-	-	-
-	-	-	-

REV F - 2006-04-17

Mouser Electronics

Authorized Distributor

Click to View Pricing, Inventory, Delivery & Lifecycle Information:

[Amphenol:](#)

[DB9W4P500G00LF](#)