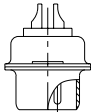
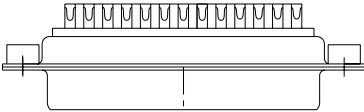
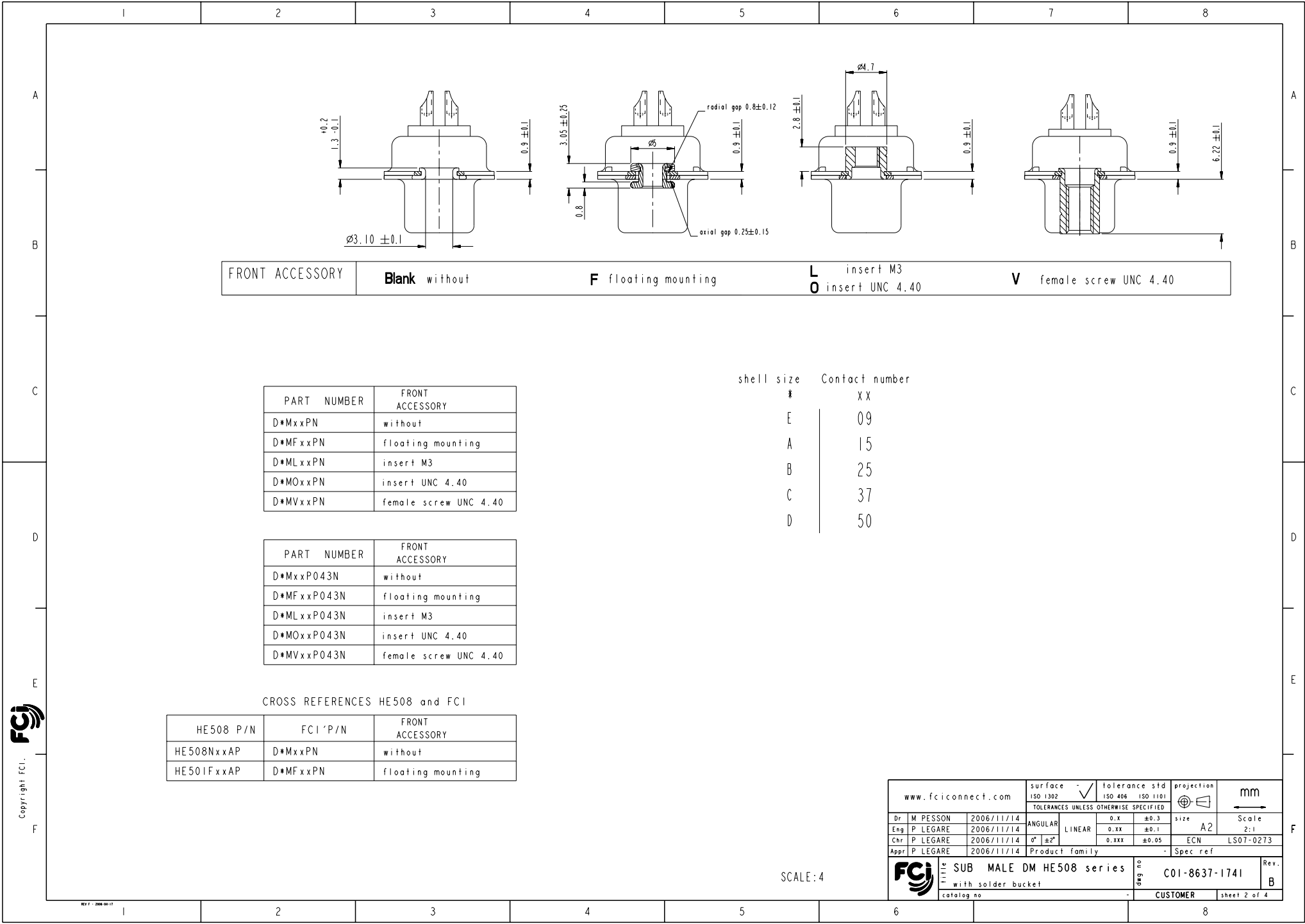
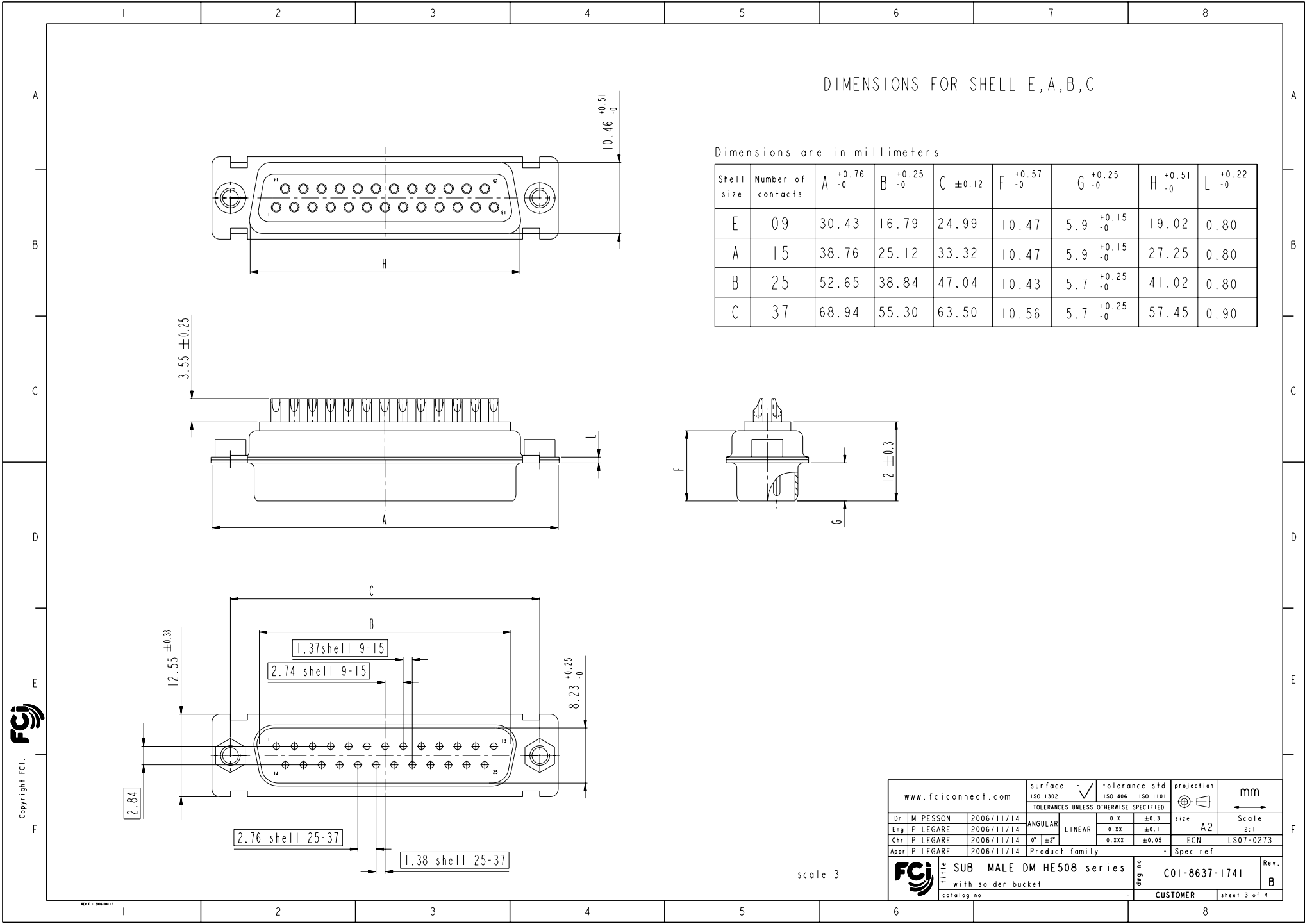


	I	2	3	4	5	6	7	8																																																																																																																										
A	<div>REFERENCE SPECIFICATIONS</div> <div>-NFC 93425 (in compliance with HE 508)</div> <div>PHYSICAL CHARACTERISTICS</div> <div>-INSULATOR MATERIAL: THERMOSET UL94V0</div> <div>BRASS</div> <div>GOLD OVER NICKEL</div> <div>-ACCESSORIES: BRASS</div> <div>Cadmium plated, yellow passivation</div> <div>-SHELLS: STEEL</div> <div>Cadmium plated, yellow passivation</div>			<div>Series</div> <div>DBML25P043N</div> <div>Shell size: E A B C D</div> <div>see sheet 2</div> <div>Front accessory definition</div> <div>see sheet 2</div> <div>Blank :without accessory</div> <div>F :floating mounting</div> <div>L :threaded insert M3</div> <div>O :threaded insert UNC 4-40</div> <div>V :female screw UNC 4-40</div> <div>Contact number (see sheet 2)</div> <div>9,15,25,37,50</div> <div>Contacts</div> <div>P Pin</div> <div>Plating</div> <div>Blank :solder bucket 500 matings/unmatings</div> <div>043 :solder bucket 500 matings/unmatings</div> <div>for harsh environment</div> <div>Obligatory for HE508</div>					A																																																																																																																									
B	<div>ELECTRICAL CHARACTERISTICS</div> <div>-NOMINAL CURRENT: 7.5A</div> <div>-CONTACT RESISTANCE: <= 7.3 m ohms</div> <div>-CONTACT/CONTACT : >=1000 V</div> <div>-CONTACT/GROUND : >=1200 V</div> <div>-INSULATION RESISTANCE: >=5000 MOhms</div> <div>ENVIRONMENTAL CHARACTERISTICS</div> <div>- CLIMATIC CATEGORY: 55/155/56</div> <div>TEMPERATURE RANGE -55°C TO +155°C</div> <div>DAMP HEAT STEADY STATE 56 DAYS</div> <div>SALT SPRAY 48 HOURS</div>								B																																																																																																																									
C	<div>MECHANICAL CHARACTERISTICS</div> <div>- RETENTION AGAINST TORQUE: - Threaded insert: 0.7 N.m minimum</div> <div>- Female screw : 0.5 N.m minimum</div>								C																																																																																																																									
D									D																																																																																																																									
E				<div></div> <div>25WAY for Example</div>					E																																																																																																																									
F				<table><tr><td colspan="4">www.fciconnect.com</td><td>surface</td><td>-</td><td>tolerance std</td><td>projection</td><td colspan="2">mm</td></tr><tr><td colspan="4"></td><td>ISO 1302</td><td>✓</td><td>ISO 406</td><td>ISO 1101</td><td colspan="2"></td></tr><tr><td colspan="4"></td><td colspan="6">TOLERANCES UNLESS OTHERWISE SPECIFIED</td></tr><tr><td>rev</td><td>ecn no</td><td>dr</td><td>date</td><td>Dr</td><td>M PESSON</td><td>2006/11/14</td><td>ANGULAR</td><td>0.X</td><td>±0.3</td><td>size</td><td>A2</td><td>Scale</td></tr><tr><td>A</td><td>LS06-0174</td><td>MPE</td><td>2006/11/14</td><td>Eng</td><td>P LEGARE</td><td>2006/11/14</td><td>LINEAR</td><td>0.XX</td><td>±0.1</td><td>ECN</td><td>LS07-0273</td><td>2:1</td></tr><tr><td>B</td><td>LS07-0273</td><td>MPE</td><td>2007/10/30</td><td>Chr</td><td>P LEGARE</td><td>2006/11/14</td><td>0° ±2°</td><td>0.XXX</td><td>±0.05</td><td colspan="3"></td></tr><tr><td colspan="4"></td><td>Appr</td><td>P LEGARE</td><td>2006/11/14</td><td colspan="3">Product family</td><td colspan="3">- Spec ref</td></tr><tr><td colspan="4"></td><td colspan="4">FCI</td><td colspan="2">SUB MALE DM HE508 series</td><td>deg no</td><td>C01-8637-1741</td><td>Rev.</td></tr><tr><td colspan="4"></td><td colspan="4">with solder bucket</td><td colspan="2"></td><td colspan="2"></td><td>B</td></tr><tr><td colspan="4"></td><td colspan="4">catalog no</td><td colspan="2"></td><td colspan="2">CUSTOMER</td><td>sheet 1 of 4</td></tr></table>					www.fciconnect.com				surface	-	tolerance std	projection	mm						ISO 1302	✓	ISO 406	ISO 1101							TOLERANCES UNLESS OTHERWISE SPECIFIED						rev	ecn no	dr	date	Dr	M PESSON	2006/11/14	ANGULAR	0.X	±0.3	size	A2	Scale	A	LS06-0174	MPE	2006/11/14	Eng	P LEGARE	2006/11/14	LINEAR	0.XX	±0.1	ECN	LS07-0273	2:1	B	LS07-0273	MPE	2007/10/30	Chr	P LEGARE	2006/11/14	0° ±2°	0.XXX	±0.05								Appr	P LEGARE	2006/11/14	Product family			- Spec ref							FCI				SUB MALE DM HE508 series		deg no	C01-8637-1741	Rev.					with solder bucket								B					catalog no						CUSTOMER		sheet 1 of 4	F
www.fciconnect.com				surface	-	tolerance std	projection	mm																																																																																																																										
				ISO 1302	✓	ISO 406	ISO 1101																																																																																																																											
				TOLERANCES UNLESS OTHERWISE SPECIFIED																																																																																																																														
rev	ecn no	dr	date	Dr	M PESSON	2006/11/14	ANGULAR	0.X	±0.3	size	A2	Scale																																																																																																																						
A	LS06-0174	MPE	2006/11/14	Eng	P LEGARE	2006/11/14	LINEAR	0.XX	±0.1	ECN	LS07-0273	2:1																																																																																																																						
B	LS07-0273	MPE	2007/10/30	Chr	P LEGARE	2006/11/14	0° ±2°	0.XXX	±0.05																																																																																																																									
				Appr	P LEGARE	2006/11/14	Product family			- Spec ref																																																																																																																								
				FCI				SUB MALE DM HE508 series		deg no	C01-8637-1741	Rev.																																																																																																																						
				with solder bucket								B																																																																																																																						
				catalog no						CUSTOMER		sheet 1 of 4																																																																																																																						
	I	2	3	4	5	6	7	8																																																																																																																										

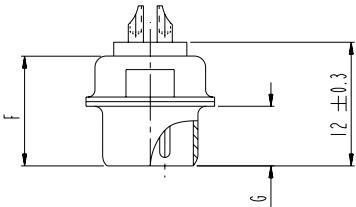




DIMENSIONS FOR SHELL E,A,B,C

Dimensions are in millimeters

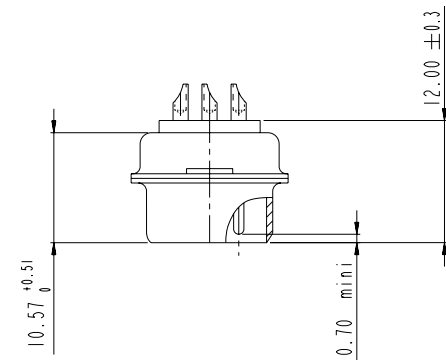
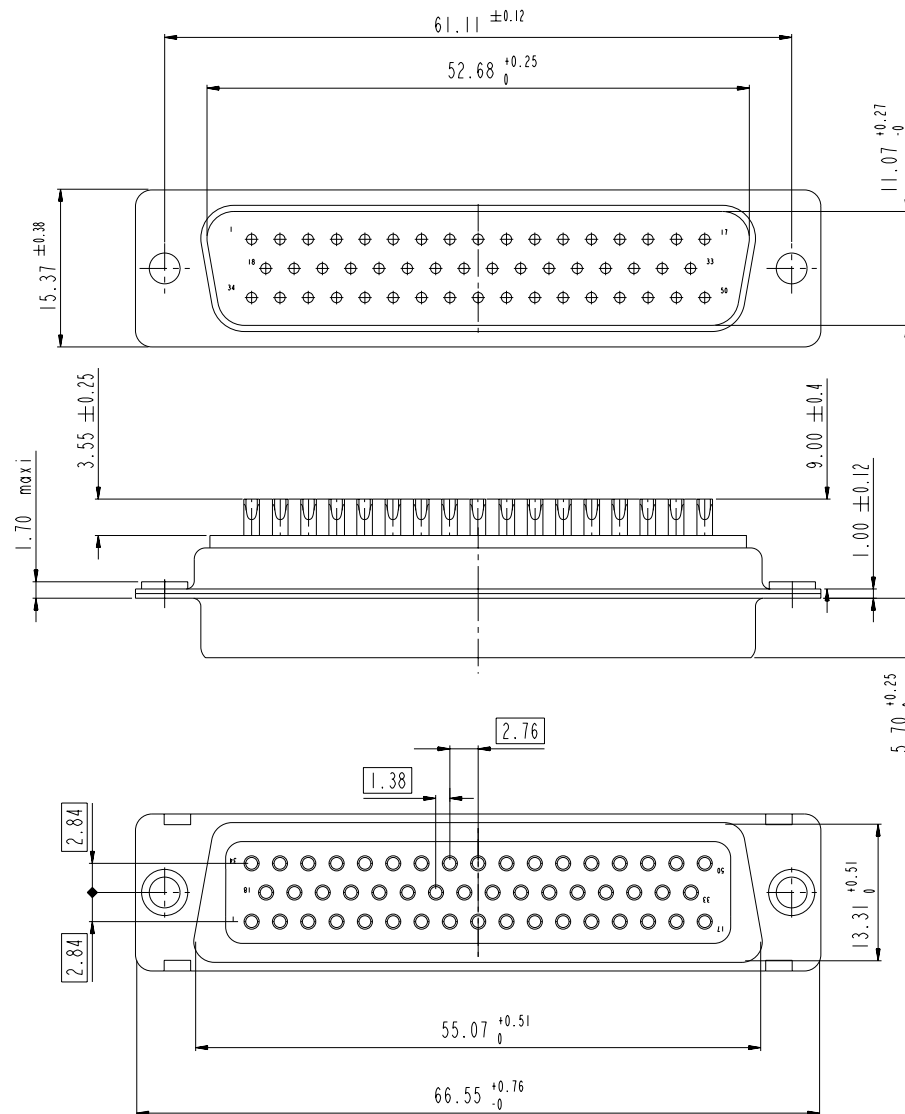
Shell size	Number of contacts	A ^{+0.76 -0}	B ^{+0.25 -0}	C ±0.12	F ^{+0.57 -0}	G ^{+0.25 -0}	H ^{+0.51 -0}	L ^{+0.22 -0}
E	09	30.43	16.79	24.99	10.47	5.9 ^{+0.15 -0}	19.02	0.80
A	15	38.76	25.12	33.32	10.47	5.9 ^{+0.15 -0}	27.25	0.80
B	25	52.65	38.84	47.04	10.43	5.7 ^{+0.25 -0}	41.02	0.80
C	37	68.94	55.30	63.50	10.56	5.7 ^{+0.25 -0}	57.45	0.90



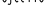


www.fciconnect.com		surface ISO 1302	tolerance std ISO 406	ISO 1101	projection mm	size A2		Scale 2:1
TOLERANCES UNLESS OTHERWISE SPECIFIED		ANGULAR	LINEAR	0.X ±0.3	0.XX ±0.1	0.XXX ±0.05	ECN	LS07-0273
Dr	M PESSON	2006/11/14	0° ±2°	Product family		Spec ref		
Eng	P LEGARE	2006/11/14	SUB MALE DM HE508 series		cat no	C01-8637-1741	Rev.	B
Chr	P LEGARE	2006/11/14	with solder bucket		CUSTOMER		sheet 3 of 4	
Appr	P LEGARE	2006/11/14	catalog no					

scale 3

DIMENSIONS FOR SHELL SIZE D (50 CONTACTS)



scale 3

www.fciconnect.com			surface <input checked="" type="checkbox"/> tolerance std ISO 1302 ISO 406 ISO 1101		projection 		mm 	
TOLERANCES UNLESS OTHERWISE SPECIFIED								
Dr	M PESSON	2006/11/14	ANGULAR	LINEAR	0.X	±0.3	size A2	Scale 2:1
Eng	P LEGARE	2006/11/14			0.0	±0.1		
Chr	P LEGARE	2006/11/14	0° ±2°		0.XXX	±0.05	ECN	LS07-0273
Appr	P LEGARE	2006/11/14	Product family			- Spec ref		
 SUB MALE DM HE508 series with solder bucket			dag no -		C01-8637-1741		Rev. B	
catalog no			-		CUSTOMER		sheet 4 of 4	

Mouser Electronics

Authorized Distributor

Click to View Pricing, Inventory, Delivery & Lifecycle Information:

[Amphenol:](#)

[DAM15P043N](#) [DBM25P043N](#) [DEM09P043N](#)