

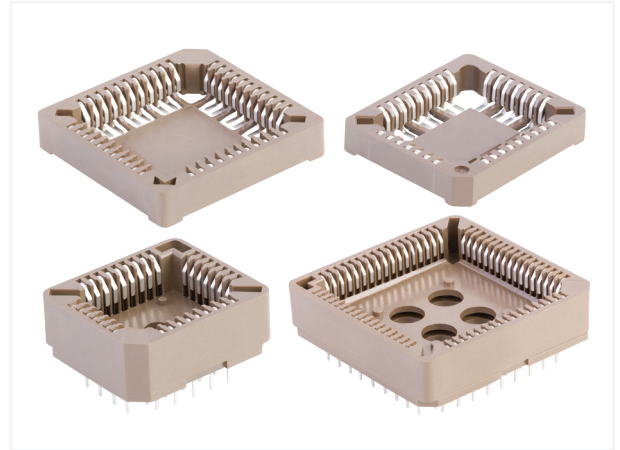
# PLCC SOCKET

## OVERVIEW

Plastic Leaded Chip Carrier (PLCC) is a low profile, thin four-wall socket built in a plastic housing used to encase integrated circuit chips.

Available in surface mount (SMT) and through-hole (THT) versions, the PLCC is designed with the standard “J”-leads. The lead counts range in 32 and 44 positions for the SMT and 32, 44 and 68 positions for the THT version. The standard pin spacing of 1.27mm on the PLCC is designed for standard chips which has the same spacing size.

PLCC is suitable for use in a variety of device types, including memory, processors, controllers and particularly common for read-only memories as it provides an easily swappable socketed chip. Applications range from consumer products through automotive and aerospace.



## FEATURES

- SMT and THT soldering options available
- 32 and 44 positions available for SMT type
- 32, 44 and 68 positions available for THT type
- Plastic standoffs
- Top contact slots
- Dedicated extraction tool
- High normal force contacts
- RoHS compliant and lead-free

## BENEFITS

- Suitable for multiple applications
- Provide outlet for heat dissipation and allow cleaning maintenance
- Allow test probing with PLCC socket in place
- Easy removal of PLCC in housing slot, minimizing potential damage
- Prevent fretting corrosion
- Meets environmental, health and safety requirements

## TECHNICAL INFORMATION

### MATERIALS

- Housing: High temperature thermoplastic, Brown
- Contact: Copper Alloy with Tin plating

### ELECTRICAL PERFORMANCE

- Low Level Contact Resistance: 20mΩ max.
- Insulation Resistance: 10,000MΩ min.
- Voltage Rating for SMT Type: 20V AC/DC
- Voltage Rating for THT Type: 250V AC/DC
- Current Rating: 1A
- Dielectric Withstand Voltage: 600VAC

### ENVIRONMENTAL

- Operating Temperature: -55°C~+125°C

### SPECIFICATIONS

- SMT Type
  - Product Specifications: GS-12-158
  - Package Specifications: : on drawing
- THT Type
  - Product Specifications: GS-12-054
  - Package Specifications: on drawing

### MECHANICAL PERFORMANCE

- SMT Type
  - Mating Force:
    - 10 ounces max. per contact
  - Unmating Force:
    - 0.5 ounces min. per contact
  - Durability: 25 mating cycles
- THT Type
  - Mating Force:
    - 32 positions: 15kg max.
    - 44 positions: 19kg max.
    - 68 positions: 26kg max.
  - Unmating Force:
    - 32 positions: 1.5kg max.
    - 44 positions: 2.0kg max.
    - 68 positions: 4.0kg max.
  - Durability: 25 mating cycles

### PACKAGING

- Tube
- Tape and Reel

### TARGET MARKETS/APPLICATIONS

- Consumer
  - Desktop
- Data
  - Programming Equipment
- Industrial & Instrumentation
  - HVAC System
  - Gaming Device
  - Lighting
  - Measurement Equipment
  - Security
  - Test
  - Vending Machine
- Medical

## PART NUMBER SELECTOR

XXXXX		X	XX	XX				
BASE PART NUMBER	PACKAGING OPTION	TOTAL POSITIONS	LEAD-FREE					
PLCC socket SMT type	69802	<table border="1"> <tr> <td>32 positions</td> <td>32</td> </tr> <tr> <td>44 positions</td> <td>44</td> </tr> </table>	32 positions	32	44 positions	44	LF	
32 positions	32							
44 positions	44							
With pegs; tube packaging		0						
Without pegs; tube packaging		1						
Without pegs; tape and reel packaging		4						

XXXXX		XX	X	X	X	XX
BASE PART NUMBER	TOTAL POSITIONS	PLATING CODE	MATERIAL	PACKAGING OPTION	LEAD-FREE	
PLCC socket THT type	54020	Tin 0	High temperature thermoplastic, brown	3	LF	
32 positions	32	With posts; tube packaging 0				
44 positions	44					
68 positions	68					

BWBPLCCSOCK0615EA4

# Mouser Electronics

Authorized Distributor

Click to View Pricing, Inventory, Delivery & Lifecycle Information:

[FCI / Amphenol:](#)

[69802-132PT](#) [69802-032PT](#) [69802-444PT](#) [54020-68030PT](#) [54020-32030PT](#) [69802-144PT](#) [69802-432PT](#) [54020-44030PT](#) [69802-132LF](#) [54020-32030LF](#) [54020-44030LF](#) [54020-68030LF](#) [69802-144LF](#) [69802-032LF](#) [69802-044LF](#)  
[69802-432LF](#) [69802-444LF](#)