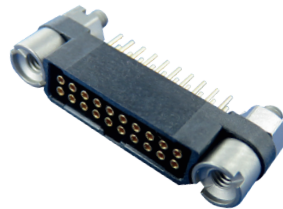


## Micro HDAS

High performance & versatile  
Board to Board 1,27mm / .050" pitch connector



### Description

Amphenol Socapex introduce the micro HDAS, its new micro board to board and board to wire connector. Micro HDAS allows you to save space on your board while maintaining a high level of performances. Offering you PC Tail & crimp contact terminations, Micro HDAS provides a modularity to fit all your needs. Micro HDAS is a Nicomatic EMM equivalent connector.

### Benefits

- Smaller & lighter rugged board connector
- Intermateable with Nicomatic's EMM
- Protected contacts by design
- 7,4mm distance between boards

### Features

- 9 arrangements, from 4 to 60 contacts
- PC Tail & Crimp contacts (pins only)
- Meet & Exceed MIL-DTL-55302G & 83513G
- Full range of fittings to answers your needs

### Configurations



Board to cable  
(Crimp AWG 24 to 30)



Mezzanine



Mother board to  
Daughter board

### Exploded views

#### CONTACTS



Clip technology (socket) & machined pins contacts with gold plate

#### INSULATORS



Molded LCP  
Polarized

#### FITTINGS



Stainless steel

### Markets



Commercial Aerospace



Military Aerospace



Ground Vehicle



C4ISR



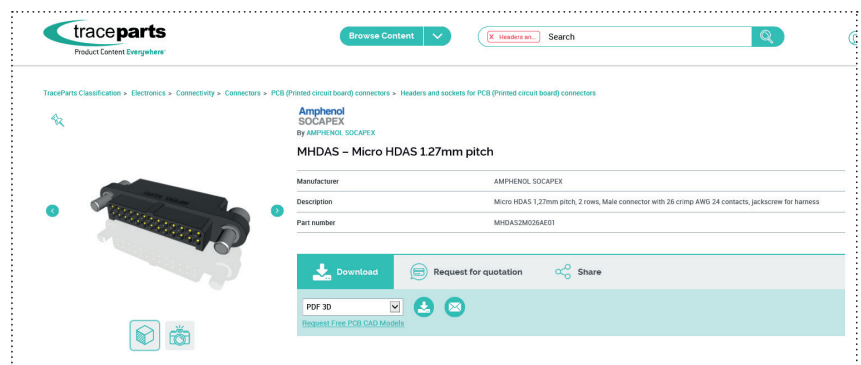
Missiles

## Technical Specifications

MECHANICAL CHARACTERISTICS	Micro HDAS	MIL-DTL-55302	
Backoff (mm)	1,27	N/A	
Contact engagement & separation forces			
Mating force per contact (N)	$0,39 < F < 0,68$	4.5.3	
Unmating force per contact (N)	$0,16 < F < 0,21$		
Mating and unmating forces - Initial - Tested on a 30 ways connector			
Mating forces (N) - average per contact	0,44	4.5.4	
Unmating forces (N) - average per contact	0,31		
Durability cycles	500	4.5.9	
Sinusoidal vibrations	Up to 45g	4.5.10	
Shocks (sawtooth/6ms)	Up to 160g	4.5.10	
Fixing torque between connector and PCB (N.m)	0,3	N/A	
Fixing torque between connectors (N.m)	0,2	N/A	
ENVIRONMENTAL CHARACTERISTICS			
Temperature cycling (°C) - EIA-364-32D	-65/+260	4.5.13	
Salt spray (hours)	96	4.5.11	
Humidity	10 cycles of 24 hours	4.5.15	
ELECTRICAL CHARACTERISTICS			
	Contact configuration	@25°C	@85°C
Current rating per contact (A) - 30 ways connector	YD/YD	3,4A	2,5A
	YD/YC	3,9A	2,6A
	YD/CRIMP	Depending on cable, up to 5A	
Insulation resistance (at 500Vdc) (GΩ)	> 5	4.5.8	
Contact resistance (mΩ)	< 8	4.5.5	
Dielectric withstanding voltage (Vrms) at sea level	750		
Dielectric withstanding voltage (Vrms) 70 000 feet (between contacts)	480	4.5.7.1	
Dielectric withstanding voltage (Vrms) 70 000 feet (connectors soldered)	350		

## Online configurator & 3D model download

You can define references according your needs and download directly 3D models in several formats on Micro HDAS product page in our website. [www.amphenol-socapex.com](http://www.amphenol-socapex.com) or by clicking here.



## How to order

1.	2.	3.	4.	5.	6.
Series	Number of rows	Connector type	Number of contacts	Contact type	Fitting
MHDAS	2	M	016	YC	E61

### 1. Series name

**MHDAS** Micro HDAS 1,27 mm pitch

### 2. Number of rows

**2** 2 rows connector

### 3. Connector type

**M** Male connector

**F** Female connector

### 4. Number of contacts

**004**      **020**      **040**

**008**      **026**      **050**

**016**      **030**      **060**

### 5. Contact type

**A** Crimp AWG 24 (male only) ✓

**B** Crimp AWG 26 (male only) ✓

**G** Crimp AWG 28-30 (male only) ✓

**YC** Right angle PC tail standard ✓

**YD** Straight PC tail standard ✓



### 6. Fitting

**E01** Jackscrew for harness

**E10** Male straight guiding

**E11** Male 90° guiding

**E50** Female straight jackscrew

**E51** Female 90° jackscrew

**E60** Female straight guiding

**E61** Female 90° guiding

## Fittings compatibility

Contact	Fitting	Compatible with
A - B - G	<b>E01</b>	Jackscrew for harness
	<b>E11</b>	Male 90° guiding
YC	<b>E51</b>	Female 90° jackscrew
	<b>E61</b>	Female 90° guiding
YD	<b>E10</b>	Male straight guiding
	<b>E50</b>	Female straight jackscrew
	<b>E60</b>	Female straight guiding

Note: fittings are always delivered with connector.

## Connector marking

Micro HDAS connectors are laser marked.  
Example of marking :

Series name	Contact type	Date code
<b>MHDAS</b>	<b>YC</b>	<b>YYWW</b>

Series name : MHDAS = Micro HDAS

Contact type : as specified in our how to order

YYWW : year + week batch



### Amphenol Socapex

948, promenade de l'Arve BP29  
74311 Thyez Cedex - France  
Phone: +33 (0)4 50 89 28 00  
[contact@amphenol-socapex.fr](mailto:contact@amphenol-socapex.fr)  
[www.amphenol-socapex.com](http://www.amphenol-socapex.com)



### For Technical Support

+33 (0)4 50 89 28 49  
[technicalsupport@amphenol-socapex.fr](mailto:technicalsupport@amphenol-socapex.fr)  
[www.amphenol-socapex.com/technical\\_support](http://www.amphenol-socapex.com/technical_support)



### To buy our products

+33 (0)4 50 90 28 00  
[contact@amphenol-socapex.fr](mailto:contact@amphenol-socapex.fr)  
[www.amphenol-socapex.com/amphenol/sales](http://www.amphenol-socapex.com/amphenol/sales)  
Request a quote online at [www.amphenol-socapex.com/quotation\\_request](http://www.amphenol-socapex.com/quotation_request)



### Documentation

[www.amphenol-socapex.com/documentation](http://www.amphenol-socapex.com/documentation)  
To order a paper version of our catalogs, send an e-mail to [communication@amphenol-socapex.fr](mailto:communication@amphenol-socapex.fr)

# Mouser Electronics

Authorized Distributor

Click to View Pricing, Inventory, Delivery & Lifecycle Information:

## Amphenol:

[MHDAS2F004YDE10](#) [MHDAS2F004YDE50](#) [MHDAS2F004YDE60](#) [MHDAS2F008YDE10](#) [MHDAS2F008YDE50](#)  
[MHDAS2F008YDE60](#) [MHDAS2M060YCE61](#) [MHDAS2M060YDE10](#) [MHDAS2M060YDE60](#) [MHDAS2M050YDE60](#)  
[MHDAS2M060AE01](#) [MHDAS2M060BE01](#) [MHDAS2M060GE01](#) [MHDAS2M060YCE11](#) [MHDAS2M060YCE51](#)  
[MHDAS2M050BE01](#) [MHDAS2M050GE01](#) [MHDAS2M050YCE11](#) [MHDAS2M050YCE51](#) [MHDAS2M050YCE61](#)  
[MHDAS2M050YDE10](#) [MHDAS2M040YCE11](#) [MHDAS2M040YCE51](#) [MHDAS2M040YCE61](#) [MHDAS2M040YDE10](#)  
[MHDAS2M040YDE60](#) [MHDAS2M050AE01](#) [MHDAS2M030YCE61](#) [MHDAS2M030YDE10](#) [MHDAS2M030YDE60](#)  
[MHDAS2M040AE01](#) [MHDAS2M040BE01](#) [MHDAS2M040GE01](#) [MHDAS2M026YDE60](#) [MHDAS2M030AE01](#)  
[MHDAS2M030BE01](#) [MHDAS2M030GE01](#) [MHDAS2M030YCE11](#) [MHDAS2M030YCE51](#) [MHDAS2M026BE01](#)  
[MHDAS2M026GE01](#) [MHDAS2M026YCE11](#) [MHDAS2M026YCE51](#) [MHDAS2M026YCE61](#) [MHDAS2M026YDE10](#)  
[MHDAS2M020YCE11](#) [MHDAS2M020YCE51](#) [MHDAS2M020YCE61](#) [MHDAS2M020YDE10](#) [MHDAS2M020YDE60](#)  
[MHDAS2M026AE01](#) [MHDAS2M016YCE61](#) [MHDAS2M016YDE10](#) [MHDAS2M016YDE60](#) [MHDAS2M020AE01](#)  
[MHDAS2M020BE01](#) [MHDAS2M020GE01](#) [MHDAS2M008YDE60](#) [MHDAS2M016AE01](#) [MHDAS2M016BE01](#)  
[MHDAS2M016GE01](#) [MHDAS2M016YCE11](#) [MHDAS2M016YCE51](#) [MHDAS2M008BE01](#) [MHDAS2M008GE01](#)  
[MHDAS2M008YCE11](#) [MHDAS2M008YCE51](#) [MHDAS2M008YCE61](#) [MHDAS2M008YDE10](#) [MHDAS2M004YCE11](#)  
[MHDAS2M004YCE51](#) [MHDAS2M004YCE61](#) [MHDAS2M004YDE10](#) [MHDAS2M004YDE60](#) [MHDAS2M008AE01](#)  
[MHDAS2F060YDE10](#) [MHDAS2F060YDE50](#) [MHDAS2F060YDE60](#) [MHDAS2M004AE01](#) [MHDAS2M004BE01](#)  
[MHDAS2M004GE01](#) [MHDAS2F040YDE10](#) [MHDAS2F040YDE50](#) [MHDAS2F040YDE60](#) [MHDAS2F050YDE10](#)  
[MHDAS2F050YDE50](#) [MHDAS2F050YDE60](#) [MHDAS2F026YDE10](#) [MHDAS2F026YDE50](#) [MHDAS2F026YDE60](#)  
[MHDAS2F030YDE10](#) [MHDAS2F030YDE50](#) [MHDAS2F030YDE60](#) [MHDAS2F016YDE10](#) [MHDAS2F016YDE50](#)  
[MHDAS2F016YDE60](#) [MHDAS2F020YDE10](#) [MHDAS2F020YDE50](#) [MHDAS2F020YDE60](#)