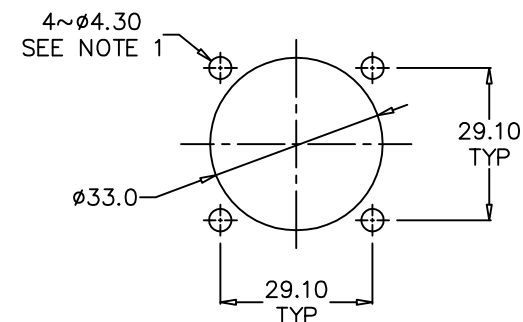





PANEL CUT OUT

NOTE: 1. THE DIAMETER OF THE 4 MOUNTING HOLES ON THE PANEL
CUT OUT DEPENDS ON THE SIZE OF THE SCREW TO BE USED
2. FOR EXAMPLE: FOR AN AP-4-22 USE ASSY No. 128157-0004



2	248-4422-000	248-4422-000	AP MRK II 22 SHELL	1	BREAK ALL SHARP EDGES AND REMOVE ALL BURRS	CAD FILE: 00813100	URN: S.M.D	DATE: 05-05-90	AP*-22 CUSTOMER/ASSEMBLY DRAWING	Amphenol Amphenol Australia Pty Ltd, 2 Fireways Blvd, Keysborough, Vic3170 DRAWING NO. 128157-000* SHEET 1 OF 1	
1	SEE CHART	SEE CHART	EP/AP PIN INSULATOR ASSEMBLY	1	DO NOT SCALE	MATL: REFER TO COMPONENT	CKD: T.N	DATE: 18-09-01			
						FINISH: REFER TO COMPONENT	APP'D: P.M	DATE: 11-10-01			
ITEM	PART No.	DWG No.	DESCRIPTION	QTY	DIMENSIONS IN MILLIMETRES	 THIRD ANGLE PROJECTION	SCALE: 2:1 UOS	PART No: 128157-000*	SIZE: A3	128157-000*	1 OF 1

3	UPDATE TO AMPHENOL TITLE BLOCK & LOGO REDRAW, ADD BOM & PANEL CUT OUT	M.N.H.	24-04-01	7791
2		R.D.	18-09-95	6253
0	REFER TO FIRST ISSUE	S.M.D	05-03-90	----
REV.	CHANGE DETAILS	BY	DATE	CHG/No

00	TITLE:	AP-*22		Amphenol	
01		CUSTOMER/ASSEMBLY		Amphenol Australia Pty Ltd, 2 Fiewoods Blvd, Keysborough, Vic3171	
1		DRAWING		DRAWING NO.	SHEET
		128157-000*	SIZE: A3	128157-000*	1 OF 1

Mouser Electronics

Authorized Distributor

Click to View Pricing, Inventory, Delivery & Lifecycle Information:

[Amphenol:](#)

[AP-6-22](#)