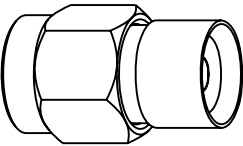


NOTES:

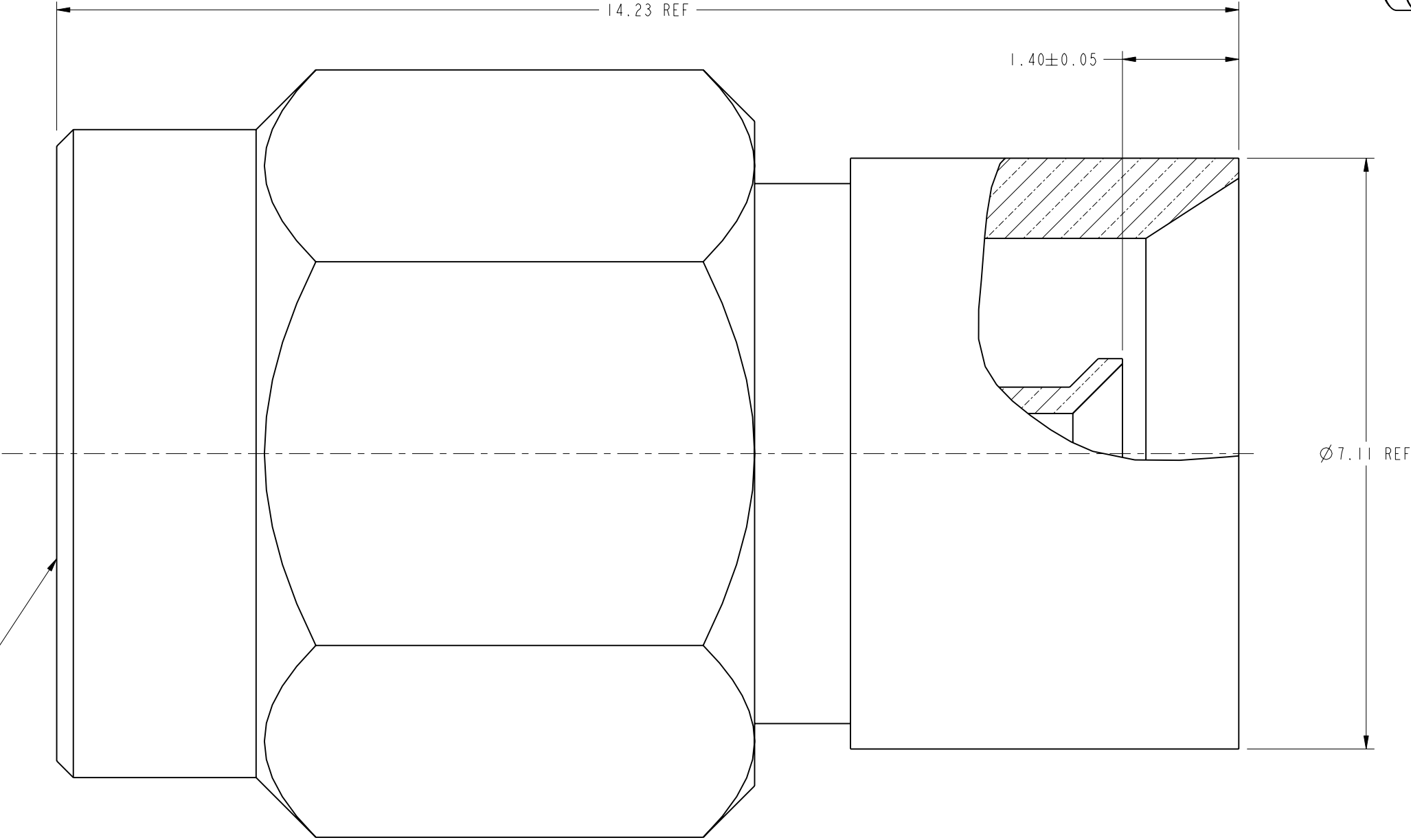
1. MATERIALS AND FINISHES:  
BODY - BRASS, GOLD PLATING  
CONTACT - BRASS, GOLD PLATING  
INSULATOR - PTFE
2. ELECTRICAL:  
A. IMPEDANCE : 50 OHM  
B. FREQUENCY RANGE : DC - 3.0 GHz  
C. VSWR : 1.30 MAX.
3. MECHANICAL:  
A. DURABILITY: 500 CYCLES MIN.  
B. TEMPERATURE RANGE: -65° C TO +165° C
4. PACKAGING:  
A. QUANTITY: SINGLE PACK  
B. MARKING: BAG TO BE MARKED  
"AMPHENOL RF, APH-SMAP-AF1F, AND DATE CODE"

THIRD ANGLE PROJ.

REVISIONS				
REV	DESCRIPTION	DATE	ECO	APPR
A	RELEASE TO MFG.	10-Jun-13	49463	JTS



INTERFACE PER  
MIL-STD-348  
SERIES : SMA PLUG



CUSTOMER OUTLINE DRAWING

ALL OTHER SHEETS ARE FOR INTERNAL USE ONLY

<div>UNLESS OTHERWISE SPECIFIED, DIMENSIONS ARE IN METRIC AND TOLERANCES ARE: &lt;0.5mm ± 0.05mm    0.5 - 6mm ± 0.1mm    6 - 30mm ± 0.2mm    30 - 120mm ± 0.3mm    ANGLES ±1°</div> <div>NOTICE - These drawings, specifications, or other data (1) are, and remain the property of Amphenol corp. (2) must be returned upon request; and (3) are confidential and not to be disclosed to any person other than those to whom they are given by Amphenol Corp. the furnishing of these drawings, specifications, or other data by Amphenol Corp., or to any other person to anyone for any purpose is not to be regarded by implication or otherwise in any manner licensing, granting rights to permitting such holder or any other person to manufacture, use or sell any product, process or design, patented or otherwise, that may in any way be related to or disclosed by said drawings, specifications, or other data.</div>	MATERIAL	DRAWN S.LI	DATE 10-Jun-13	TITLE SMA PLUG TO AFI JACK ADAPTER	Amphenol RF www.amphenolrf.com
	SEE NOTES	ENGINEER ABHAYA KISHORE	DATE 05-Feb-13		
	REFERENCE EAR # 5655	APPROVED S.HSIEH	DATE 11-Jun-13		
	CONFIGURATION LEVEL: <input type="checkbox"/> <input type="checkbox"/> <input type="checkbox"/>	CAD FILE		SCALE: 16.0:1.0	SHEET 2 OF 2
	FINISH			DWG SIZE B	REV A
					DRAWING NO. APH-SMAP-AF1F
					ITEM NO. APH-SMAP-AF1F
					PART NO. APH-SMAP-AF1F

# Mouser Electronics

Authorized Distributor

Click to View Pricing, Inventory, Delivery & Lifecycle Information:

[Amphenol:](#)

[APH-SMAP-AFIF](#)