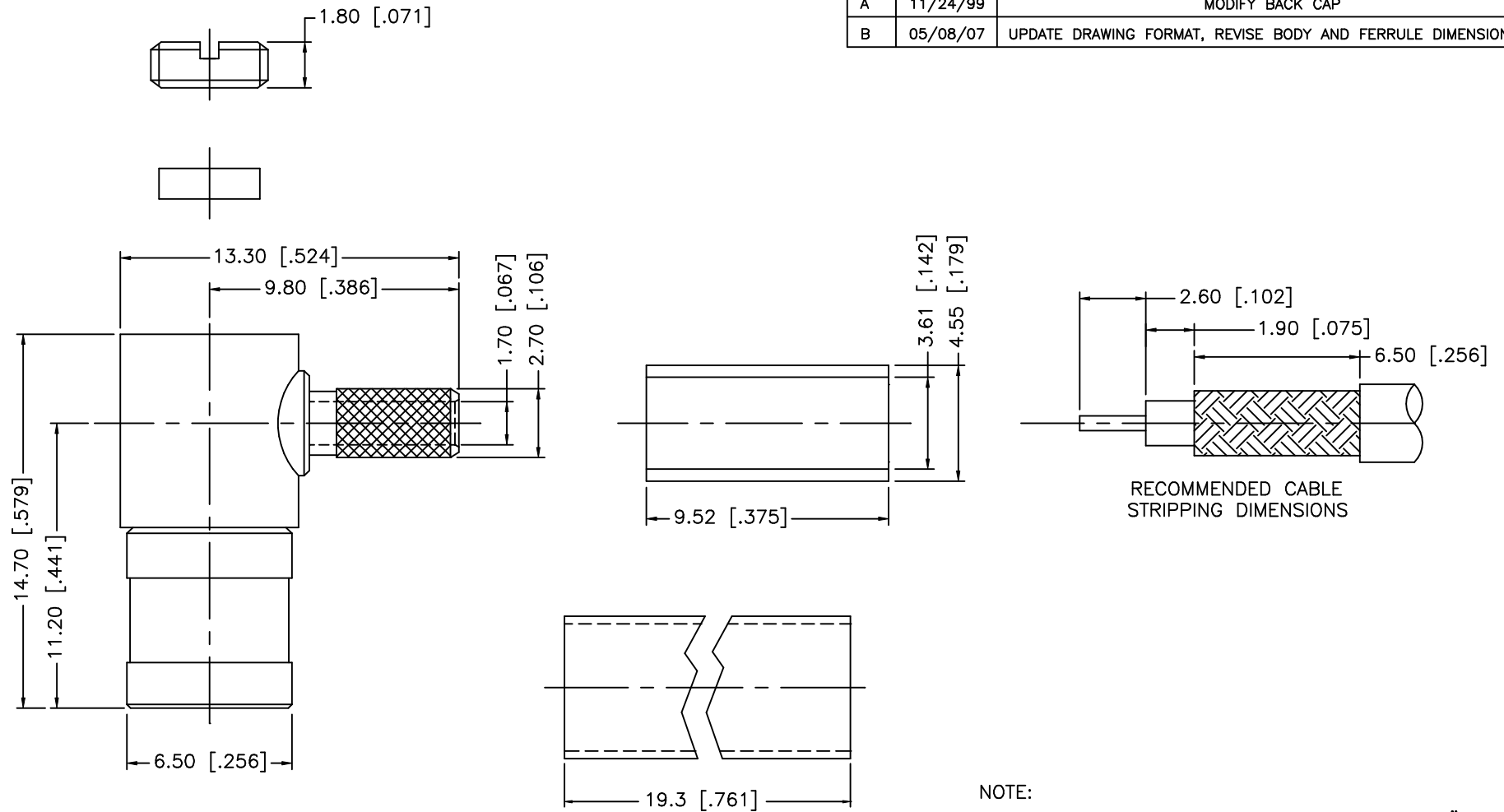


REV.	DATE	DESCRIPTION
A	11/24/99	MODIFY BACK CAP
B	05/08/07	UPDATE DRAWING FORMAT, REVISE BODY AND FERRULE DIMENSIONS



NOTE:

1. CRIMPED FERRULE HEX CRIMP SIZE .151"
2. CONTACT PIN TO SOLDER.

8				<p>UNLESS OTHERWISE SPECIFIED DIMENSIONS ARE IN MILLIMETERS. DIMENSIONS IN [] ARE IN INCHES AND FOR CUSTOMER REFERENCE ONLY.</p> <p>UNLESS OTHERWISE SPECIFIED TOLERANCES FOR MILLIMETERS ARE: 0.5 - 8mm ± 0.20mm 8 - 30mm ± 0.40mm 30 - 120mm ± 0.50mm</p> <p>UNLESS OTHERWISE SPECIFIED TOLERANCES FOR INCHES ARE: .020 - .315 = ± 0.007" .315 - 1.180 = ± 0.015" 1.180 - 4.724 = ± 0.020"</p>	APPROVALS	DATE	<h1 style="color: blue;">Amphenol Connex</h1>	
7			DRAWN		G.R.S.	05/08/07		PART DESCRIPTION SMB R/A CRIMP PLUG (FOR RG-316U/D CABLE)
6	HEAT SHRINK TUBE		1		CHECKED			
5	COVER	BRASS	NICKEL		1	ISSUED		
4	FERRULE	COPPER	NICKEL		1	SHEET	1 OF 1	PART NO. 142188
3	CONTACT PIN	BER. COPPER	GOLD		1			
2	INSULATOR	TEFLON	NATURAL		1			DWG. NO. 142188.DWG REV. B SIZE A SCALE NA
1	BODY	BRASS	NICKEL		1			
	DESCRIPTION	MATERIAL	FINISH	QTY	DO NOT SCALE DRAWING	C:/142/142188.DWG		

Mouser Electronics

Authorized Distributor

Click to View Pricing, Inventory, Delivery & Lifecycle Information:

[Amphenol:](#)

[142188](#)