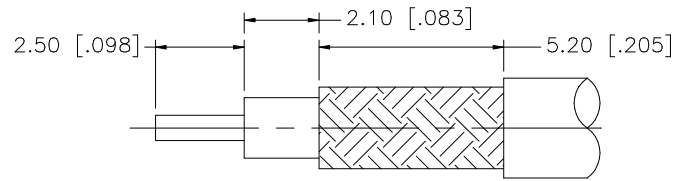
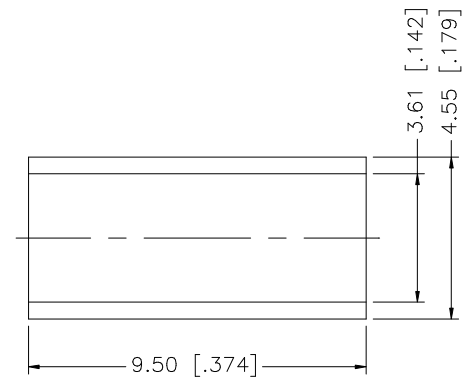
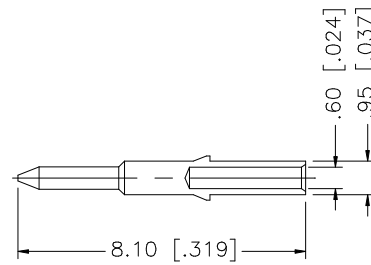
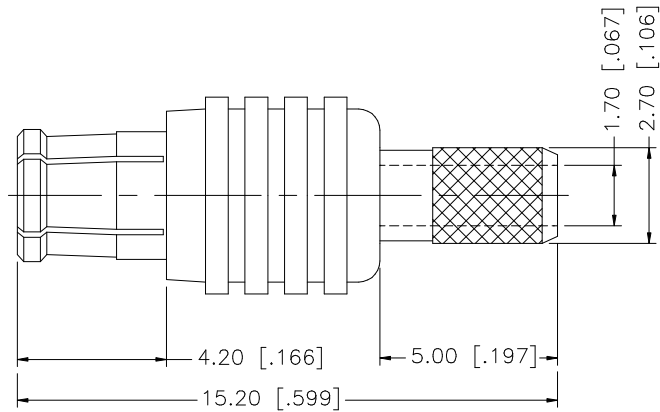


REV.	DATE	DESCRIPTION
A	01/13/99	ADD CRIMP NOTES / CHANGE FERRULE DIMS.
B	07/20/05	UPDATE DRAWING FORMAT
C	10/31/05	MODIFY CRIMP NOTES
D	02/15/07	REVISE BARREL O.D. , FERRULE DIA.



RECOMMENDED CABLE STRIPPING DIMENSIONS



NOTE:

1. CRIMPED FERRULE HEX CRIMP SIZE .151"
2. CRIMPED CONTACT PIN SQ. CRIMP SIZE 0.7(Mmm)

				UNLESS OTHERWISE SPECIFIED DIMENSIONS ARE IN MILLIMETERS, DIMENSIONS IN [ ] ARE IN INCHES AND FOR CUSTOMER REFERENCE ONLY.	APPROVALS	DATE	<b>Amphenol Connex</b>					
8				UNLESS OTHERWISE SPECIFIED TOLERANCES FOR MILLIMETERS ARE: 0.5 - 8mm ± 0.20mm 8 - 30mm ± 0.40mm 30 - 120mm ± 0.50mm  UNLESS OTHERWISE SPECIFIED TOLERANCES FOR INCHES ARE: .020 - .315 = ± 0.007" .315 - 1.180 = ± 0.015" 1.180 - 4.724 = ± 0.020"	DRAWN	G.R.S.					02/15/07	PART DESCRIPTION <b>MCX STRAIGHT CRIMP PLUG - GOLD (FOR RG-316/U DOUBLE BRAID)</b>
7					CHECKED			PART NO. <b>252121</b>				
6					ISSUED							DWG. NO. 252121.DWG
5	FERRULE	COPPER	GOLD	1	SHEET	1 OF 1	REV.	D	SIZE	A	SCALE	
4	CONTACT PIN	BRASS	GOLD	1								
3	INSULATOR	TEFLON	NATURAL	1								
2	BODY	BER. COPPER	GOLD	1								
1	HOUSING	BRASS	GOLD	1								
DESCRIPTION				MATERIAL	FINISH	QTY	DO NOT SCALE DRAWING					

# Mouser Electronics

Authorized Distributor

Click to View Pricing, Inventory, Delivery & Lifecycle Information:

[Amphenol:](#)

[252121](#)