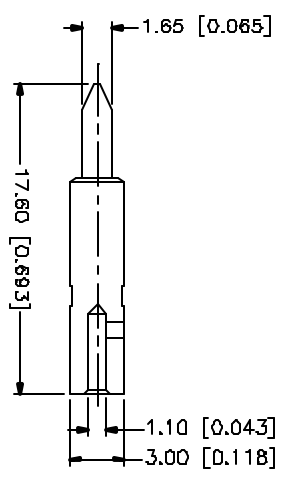
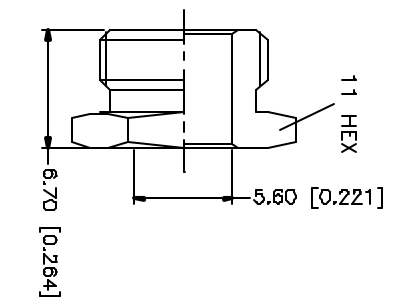
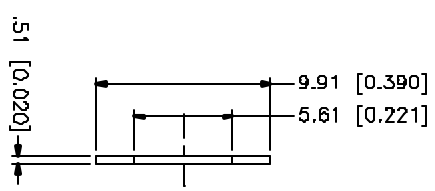
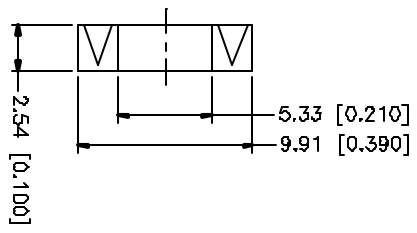
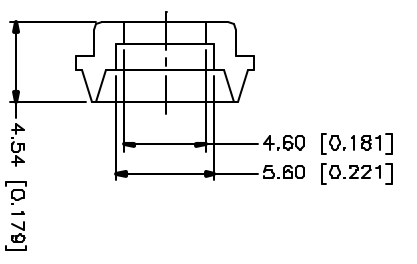
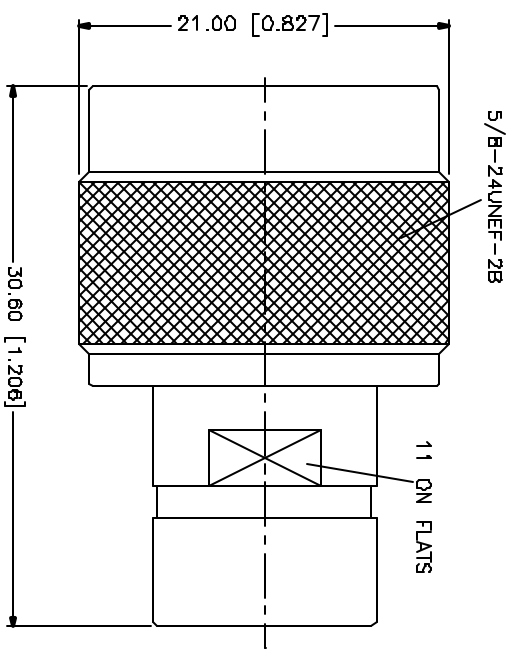
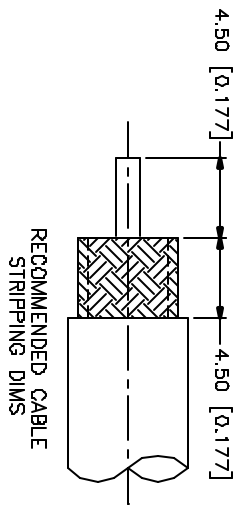


| REV. | DATE | DESCRIPTION |
|------|----------|-----------------------|
| A | 08/28/00 | REVISE OLD PRINT |
| B | 05/30/04 | UPDATE DRAWING FORMAT |



NOTE:
1. CRIMPED CONTACT PIN*
HEX CRIMP SIZE .100*
OR SOLDER.

| QTY | FINISH | MATERIAL | DESCRIPTION |
|-----|---------|----------|-------------|
| 1 | NEXCOTE | BRASS | HEX NUT |
| 1 | NEXCOTE | BRASS | WASHER |
| 1 | RED | SILKZONE | GASKET |
| 1 | NEXCOTE | BRASS | BRAD CLAMP |
| 1 | GOLD | BRASS | CONTACT PIN |
| 1 | NATURAL | TEFLON | INSULATOR |
| 1 | NEXCOTE | BRASS | BODY/SHELL |

| |
|--|
| UNLESS OTHERWISE SPECIFIED, DIMENSIONS ARE IN MILLIMETERS (DIMENSIONS IN INCHES ARE FOR REFERENCE ONLY). UNLESS OTHERWISE SPECIFIED, TOLERANCES FOR MILLIMETERS ARE: 0.5 - 3.0mm ± 0.20mm 3.0 - 12.0mm ± 0.30mm UNLESS OTHERWISE SPECIFIED, TOLERANCES FOR INCHES ARE: .020 - .312 ± 0.0075* .315 - 1.180 ± 0.016* 1.180 - 4.724 ± 0.020* |
|--|

| | |
|--------------|----------|
| APPROVALS | DATE |
| DRAWN G.R.S. | 05/30/04 |
| CHECKED | |
| ISSUED | |
| SHEET 1 OF 1 | |

| | | | | |
|----------------------------|---------------------|--------|--------|----------|
| CAD FILE C:/172/172111.DWG | DWG. NO. 172111.DWG | REV. B | SIZE A | SCALE NA |
|----------------------------|---------------------|--------|--------|----------|

Amphenol Connex

N CLAMP PLUG
(FOR RG-58C/U, 58/U, 142A/U, 223/U CABLE)

PART NO. 172111

Mouser Electronics

Authorized Distributor

Click to View Pricing, Inventory, Delivery & Lifecycle Information:

[Amphenol:](#)

[172111](#)