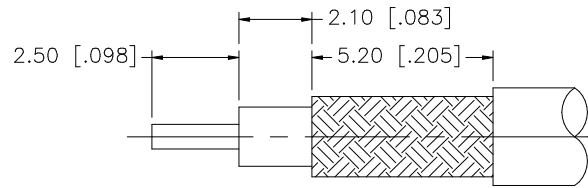
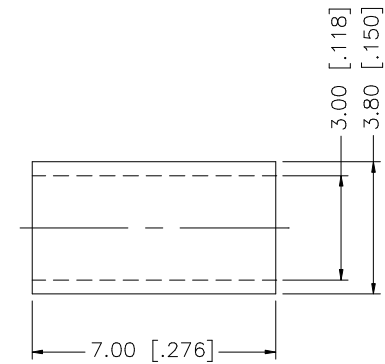
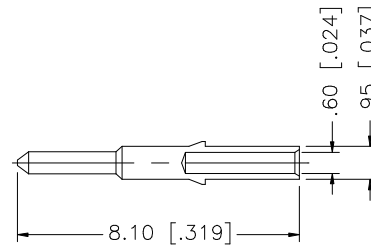
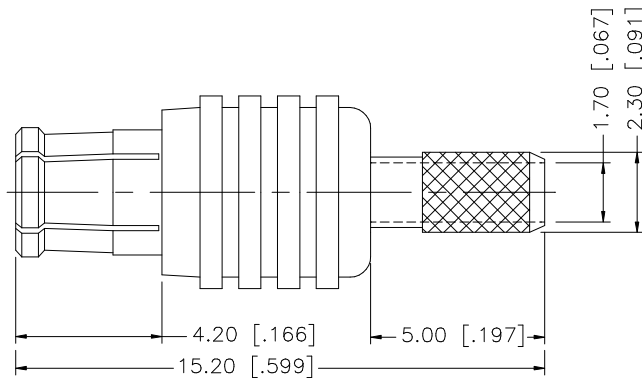


REV.	DATE	DESCRIPTION
A	01/13/99	UPDATE DRAWING
B	05/01/04	UPDATE DRAWING FORMAT
C	11/28/06	NOTE 2: CONTACT PIN TO SOLDER.



RECOMMENDED CABLE STRIPPING DIMENSIONS



NOTE:

1. CRIMPED FERRULE HEX CRIMP SIZE .128"
2. CONTACT PIN TO SOLDER.

REV.	DATE	DESCRIPTION
8		
7		
6		
5	FERRULE	COPPER
4	CONTACT PIN	BRASS
3	INSULATOR	TEFLON
2	BODY	BER. COPPER
1	HOUSING	BRASS
	DESCRIPTION	MATERIAL
		FINISH
		QTY
UNLESS OTHERWISE SPECIFIED DIMENSIONS ARE IN MILLIMETERS. DIMENSIONS IN [ ] ARE IN INCHES AND FOR CUSTOMER REFERENCE ONLY.		
UNLESS OTHERWISE SPECIFIED TOLERANCES FOR MILLIMETERS ARE:		
0.5 - 8mm ± 0.20mm		
8 - 30mm ± 0.40mm		
30 - 120mm ± 0.50mm		
UNLESS OTHERWISE SPECIFIED TOLERANCES FOR INCHES ARE:		
.020 - .315 = ± 0.007"		
.315 - 1.180 = ± 0.015"		
1.180 - 4.724 = ± 0.020"		
DO NOT SCALE DRAWING		
APPROVALS		DATE
DRAWN	G.R.S.	11/28/06
CHECKED		
ISSUED		
SHEET	1 OF 1	
CAD FILE	C:/252/252103.DWG	
<h1 style="text-align: center; color: blue;">Amphenol Connex</h1>		
PART DESCRIPTION		
MCX CRIMP PLUG (FOR RG-174/U,188A/U,316/U)		
PART NO.		
252103		
DWG. NO.	252103.DWG	REV. C
SIZE	A	SCALE NA

# Mouser Electronics

Authorized Distributor

Click to View Pricing, Inventory, Delivery & Lifecycle Information:

[Amphenol:](#)

[252103](#)