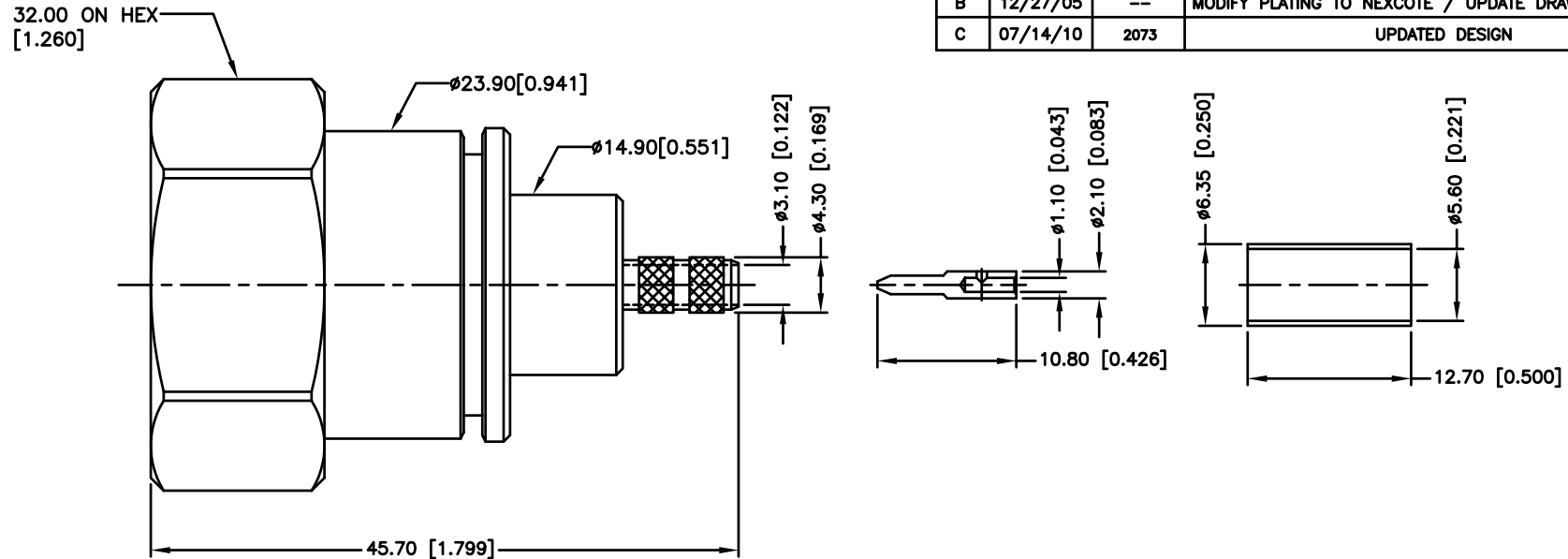


REV.	DATE	ECR NO	DESCRIPTION
A	12/29/00	--	MODIFY PLATING TO SILVER
B	12/27/05	--	MODIFY PLATING TO NEXCOTE / UPDATE DRAWING FORMAT
C	07/14/10	2073	UPDATED DESIGN



1. ELECTRIC PERFORMANCE IEC60169-4

NOMINAL IMPEDANCE(Ω)	: 50±2
FREQUENCY RANGE	: DC-3GHZ
VSWR	: ≤1.10
INSERT LOSS	: ≤0.05
INSULATION RESISTANCE(MΩ)	: >10000
PROOF VOLTAGE (V)	: 1500
CONDUCTOR RESISTANCE(MΩ)	: OUTER CONDUCTOR<0.2 INNER CONDUCTOR<0.8

2. MECHANICAL PERFORMANCE

NUT TORQUE	: 25N.m
(NUT)WHORL PULL	: 1000N
TENSILE FORCE	
(CABLE-CONNECT)	: 100N
TORSION(CABLE-CONNECT)	: 0.2N.m

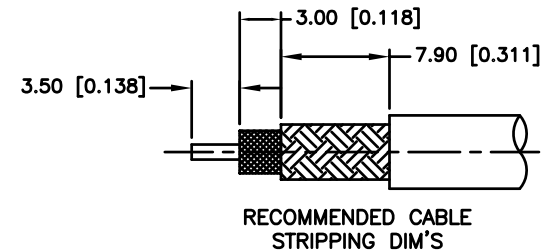
1V. ENVIRONMENT

TEMP.RANGE	: -55°C TO +155°C
WEATHER STANDARD	: IEC 60068 55 / 155/ 56
THERMAL SHOCK	: US MIL-STD 202.METH.107,COND.B
VIBRATION	: US MIL-STD 202.METH.204,COND.B
SHOCK	: US MIL-STD 202.METH.213,COND.I

V. ASSEMBLY

: INNER CONDUCTOR SOLDERED AND OUTER CONDUCTOR CRIMPED

V1. ROHS COMPLIANT.



				<div>UNLESS OTHERWISE SPECIFIED DIMENSIONS ARE IN MILLIMETERS. DIMENSIONS IN [] ARE IN INCHES AND FOR CUSTOMER REFERENCE ONLY.</div> <div>UNLESS OTHERWISE SPECIFIED TOLERANCES FOR MILLIMETERS ARE: 0.5 – 8mm ± 0.20mm 8 – 30mm ± 0.40mm 30 – 120mm ± 0.50mm</div> <div>UNLESS OTHERWISE SPECIFIED TOLERANCES FOR INCHES ARE: .020 – .315 = ± 0.007" .315 – 1.180 = ± 0.015" 1.180 – 4.724 = ± 0.020"</div> <div>DO NOT SCALE DRAWING</div>	APPROVALS	DATE	<div>Amphenol Connex</div>									
					DRAWN	CLEMENT						07/14/10	PART DESCRIPTION			
6	INSULATOR	PTFE	NATURAL		1	CHECKED			7/16 CRIMP PLUG (FOR RG–58/U, 58C/U, LMR195 CABLE)							
5	GASKET	SILICONE RUBBER	NATURAL		1	ISSUED			PART NO.							
4	NUT	BRASS	WHITE BRONZE		1	SHEET	1 OF 1		272103							
3	TUBE	COPPER	WHITE BRONZE		1											
2	OUTER CONDUCTOR	BRASS	WHITE BRONZE		1											
1	INNER CONDUCTOR	SPRING COPPER/BRASS	SILVER		1											
	DESCRIPTION	MATERIAL	FINISH		QTY	CAD FILE		C:/272/272103.DWG	DWG. NO.	272103.DWG	REV.	C	SIZE	A	SCALE	NA

Mouser Electronics

Authorized Distributor

Click to View Pricing, Inventory, Delivery & Lifecycle Information:

[Amphenol:](#)

[272103](#)