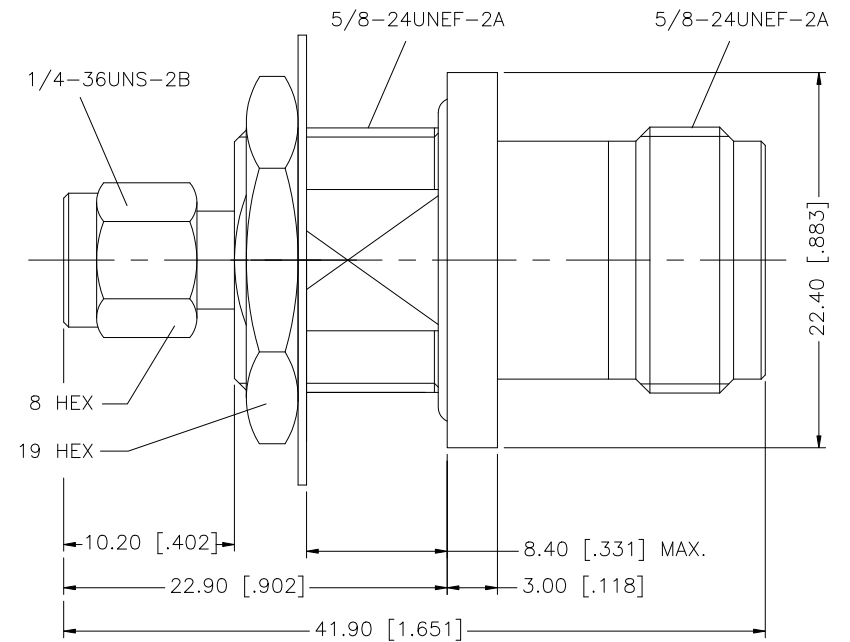
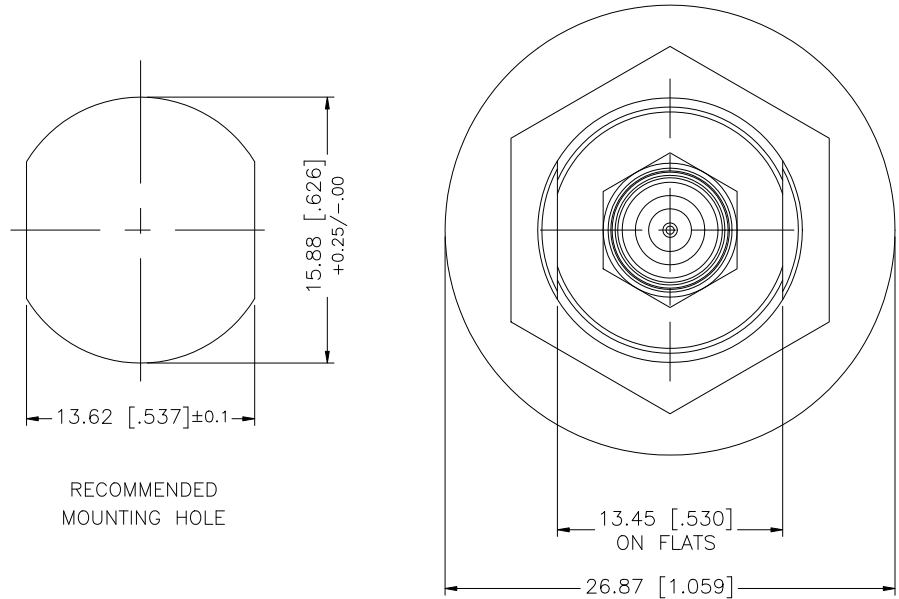


REV.	DATE	ECR NO.	DESCRIPTION
NC	05/25/08	100020	INITIAL RELEASE
A	12/08/08	—	REVISE TO CORRECT BODY STYLE



					UNLESS OTHERWISE SPECIFIED DIMENSIONS ARE IN MILLIMETERS. DIMENSIONS IN [ ] ARE IN INCHES AND FOR CUSTOMER REFERENCE ONLY.		APPROVALS		DATE		Amphenol Connex				
8						UNLESS OTHERWISE SPECIFIED TOLERANCES FOR MILLIMETERS ARE: 0.5 – 8mm ± 0.20mm 8 – 30mm ± 0.40mm 30 – 120mm ± 0.50mm	DRAWN	GRS	12/08/08						
7						UNLESS OTHERWISE SPECIFIED TOLERANCES FOR INCHES ARE: .020 – .315 = ± 0.007” .315 – 1.180 = ± 0.015” 1.180 – 4.724 = ± 0.020”	CHECKED			PART DESCRIPTION  SMA MALE TO N FEMALE BULKHEAD ADAPTER					
6	HEX NUT	BRASS	NEXCOTE	1			ISSUED								
5	LOCK WASHER	BRASS	NEXCOTE	1			SHEET	1 OF 1		PART NO.  242235					
4	GASKET	SILICONE	BLACK	1			CAD FILE C:/242/242235.DWG								
3	CONTACT PIN	PHOS. BRONZE	GOLD	1			DWG. NO.		242235.DWG	REV.	A	SIZE	A	SCALE	NA
2	INSULATOR	PTFE	NATURAL	1											
1	BODY	BRASS	NEXCOTE	1											
DESCRIPTION					MATERIAL	FINISH	QTY	DO NOT SCALE DRAWING							

# Mouser Electronics

Authorized Distributor

Click to View Pricing, Inventory, Delivery & Lifecycle Information:

[Amphenol:](#)

[242235](#)