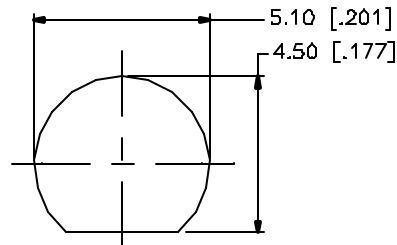
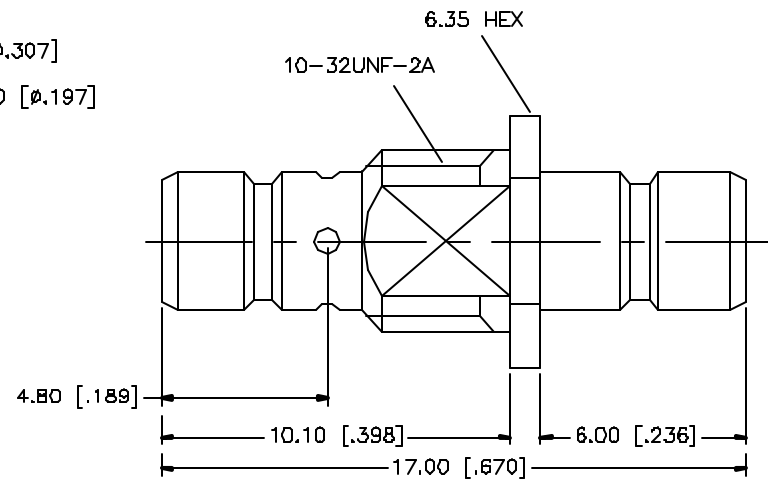
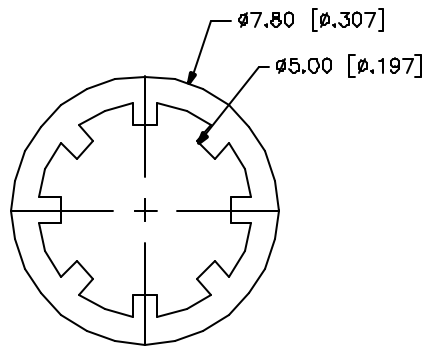
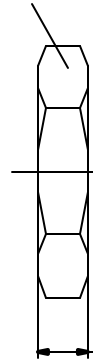


REV.	DATE	DESCRIPTION
A	03/27/05	UPDATE DRAWING FORMAT



RECOMMENDED
MOUNTING HOLE

6.35 HEX NUT



					<div>UNLESS OTHERWISE SPECIFIED DIMENSIONS ARE IN MILLIMETERS DIMENSIONS IN [] ARE IN INCHES AND FOR CUSTOMER REFERENCE ONLY.</div> <div>UNLESS OTHERWISE SPECIFIED TOLERANCES FOR MILLIMETERS ARE: 0.5 - 8mm ± 0.20mm 8 - 30mm ± 0.40mm 30 - 120mm ± 0.50mm</div> <div>UNLESS OTHERWISE SPECIFIED TOLERANCES FOR INCHES ARE: .020 - .315 = ± 0.007" .315 - 1.180 = ± 0.015" 1.180 - 4.724 = ± 0.020"</div> <div>DO NOT SCALE DRAWING</div>	APPROVALS	DATE	<div>Amphenol Connex</div>					
8						DRAWN	G.R.S.						03/27/05
7						CHECKED			PART DESCRIPTION SMB BULKHEAD JACK TO JACK ADAPTER				
6						ISSUED							
5						SHEET	1 OF 1		PART NO. 142250				
4													
3	CONTACT PIN	BRASS	GOLD	1				DWG. NO. 142250.DWG					
2	INSULATOR	TEFLON	NATURAL	1									
1	BODY	BRASS	GOLD	1				REV. A	SIZE A	SCALE NA			
	DESCRIPTION	MATERIAL	FINISH	QTY			C:\142\142250.DWG						

Mouser Electronics

Authorized Distributor

Click to View Pricing, Inventory, Delivery & Lifecycle Information:

[Amphenol:](#)

[142250](#)