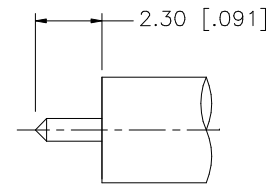
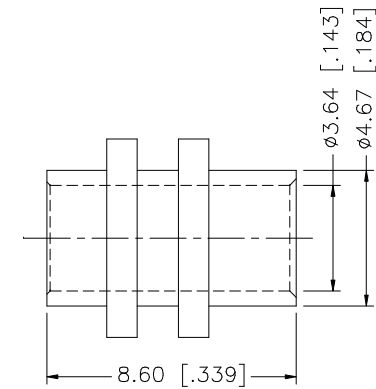
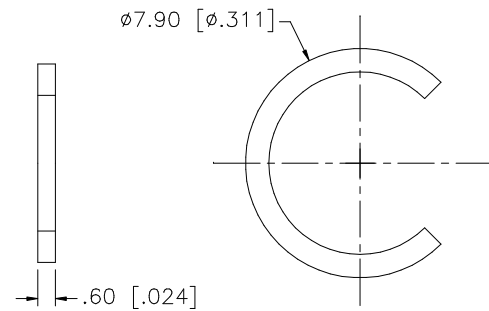
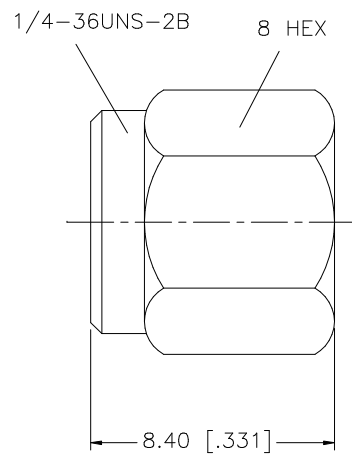


REV.	DATE	DESCRIPTION
A	01/20/04	UPDATE DRAWING FORMAT



RECOMMENDED CABLE STRIPPING DIMENSIONS



				<div>UNLESS OTHERWISE SPECIFIED DIMENSIONS ARE IN MILLIMETERS. DIMENSIONS IN [] ARE IN INCHES AND FOR CUSTOMER REFERENCE ONLY.</div> <div>UNLESS OTHERWISE SPECIFIED TOLERANCES FOR MILLIMETERS ARE: 0.5 – 8mm ± 0.20mm 8 – 30mm ± 0.40mm 30 – 120mm ± 0.50mm</div> <div>UNLESS OTHERWISE SPECIFIED TOLERANCES FOR INCHES ARE: .020 – .315 = ± 0.007” .315 – 1.180 = ± 0.015” 1.180 – 4.724 = ± 0.020”</div> <div>DO NOT SCALE DRAWING</div>	APPROVALS	DATE	<h1>Amphenol Connex</h1>				
8					DRAWN	G.R.S.					01/20/04
7					CHECKED						
6								PART DESCRIPTION			
5								SMA DIRECT SOLDER PLUG (.141 SEMI-RIGID CABLE)			
4	RETAINER RING	BER. COPPER	NATURAL		1			PART NO. 132100			
3	GASKET	SILICONE	RED		1						
2	BODY	BRASS	GOLD	1							
1	HOUSING	BRASS	GOLD	1							
	DESCRIPTION	MATERIAL	FINISH	QTY		CAD FILE	DWG. NO.	132100	REV. A	SIZE A	SCALE NA
						C:/132/132100.DWG					

Mouser Electronics

Authorized Distributor

Click to View Pricing, Inventory, Delivery & Lifecycle Information:

[Amphenol:](#)

[132100](#)