

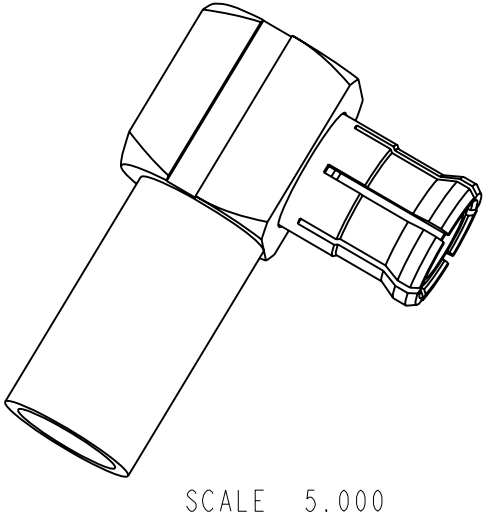
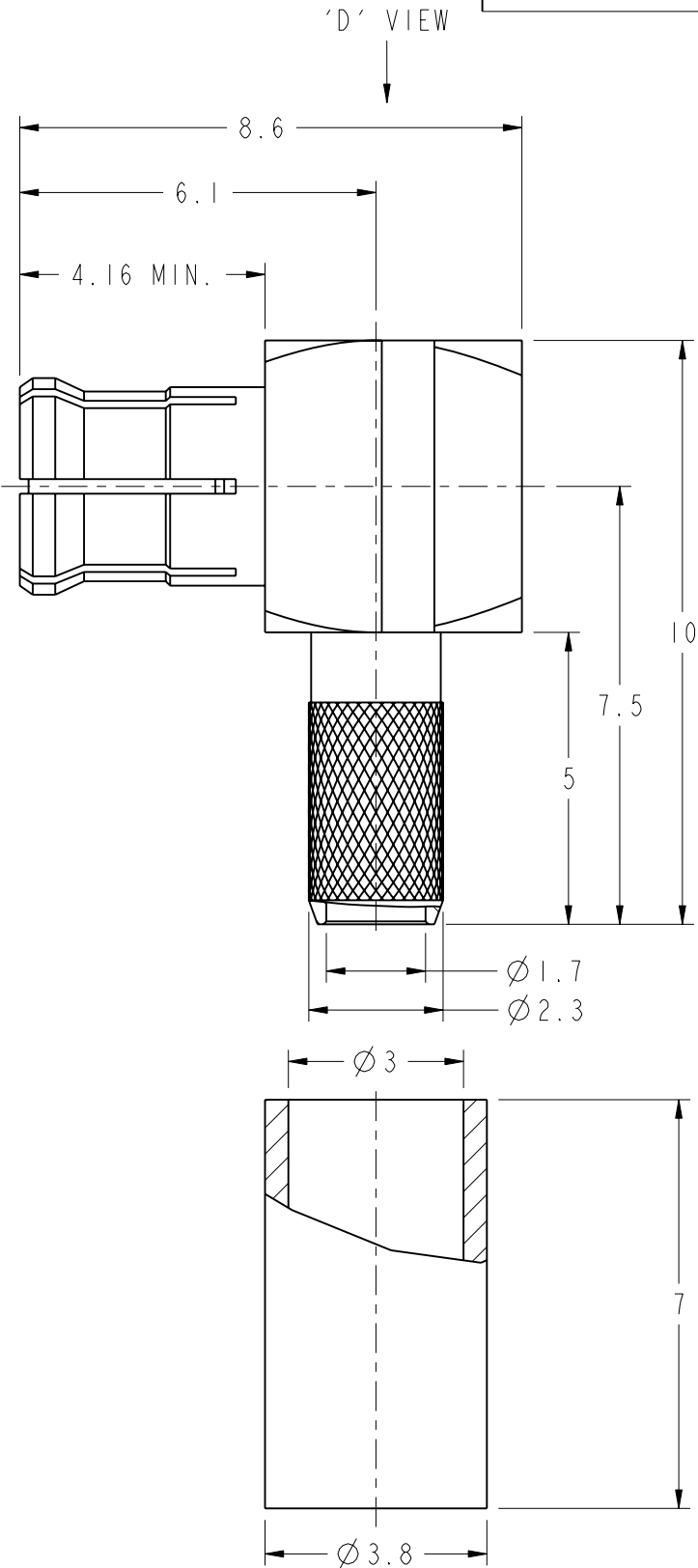
NOTES:

1. MATERIAL AND FINISH:
HOUSING - BRASS, GOLD PLATING
BODY - BERYLLIUM COPPER, GOLD PLATING
CONTACT PIN - BRASS, GOLD PLATING
COVER - BRASS, GOLD PLATING
FERRULE - COPPER, GOLD PLATING
INSULATOR - PTFE, NATURAL
INSULATOR - DERLIN, NATURAL
2. ELECTRICAL:
A. IMPEDANCE:50 OHM
B. FREQUENCY RANGE: 0-6 GHz
C. DIELECTRIC WITHSTANDING VOLTAGE:1000 VRMS. MIN.
3. MECHANICAL:
A. DURABILITY:500 CYCLES MIN.
B. TEMPERATURE RANGE:-40°C TO +85°C
4. CRIMPED FERRULE
HEX CRIMP SIZE .128"
5. CONTACT PIN TO SOLDER

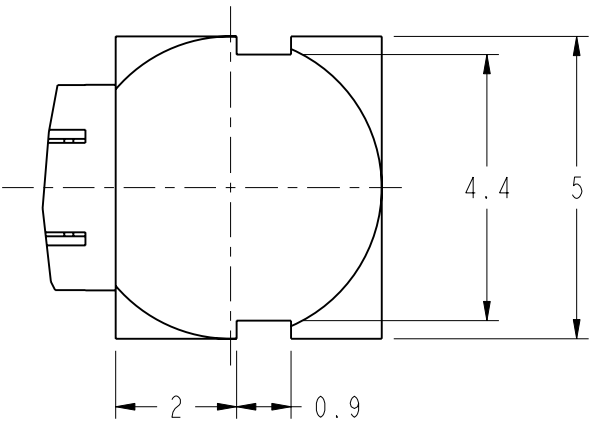
THIRD ANGLE PROJ.

REVISIONS

REV	DESCRIPTION	DATE	ECO	APPR
A	RELEASE TO MFG .	7/26/99'	43080	
B	NO.2 WAS CHANGED\ RD-DM89011401B	01-14-00'		
C	NO.1 WAS CHANGED\ RD-DM89082401Y	08-24-00'		
D	NO.3 WAS CHANGED\ RD-DM90091401H	09-24-01'		
E	NO.2 WAS CHANGED\ RD-DM91072501L	10-29-02'		
F	NO.5 WAS CHANGED\ RD-DM92061201L	06-12-03'		
G	NO.2 WAS CHANGED\ RD-DM08071801J1	07-24-08'		SCOTT
H	UPDATED DRAWING WITH GLOBAL FORMAT	09-Jan-12	48910	SCOTT

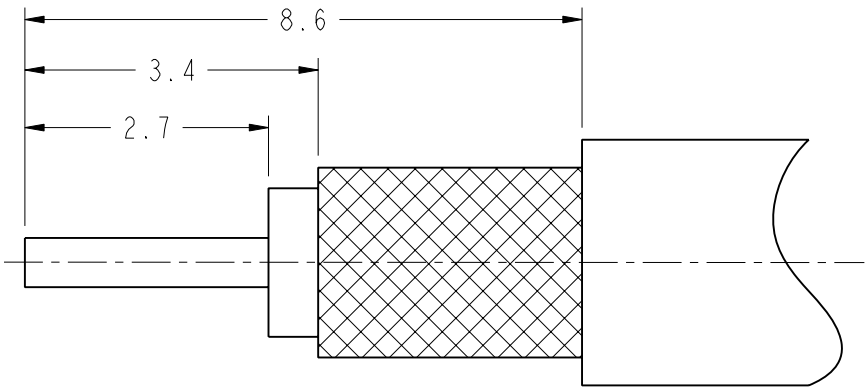


SCALE 5.000



D VIEW

SCALE 8.000



RECOMMENDED
CABLE STRIPPING DIMENSIONS

CUSTOMER OUTLINE DRAWING
ALL OTHER SHEETS ARE FOR INTERNAL USE ONLY

UNLESS OTHERWISE SPECIFIED, DIMENSIONS ARE IN METRIC AND TOLERANCES ARE:
<0.5mm ± 0.05mm 0.5 - 6mm ± 0.1mm 6 - 30mm ± 0.2mm 30 - 120mm ± 0.3mm ANGLES ± 1°

NOTICE - These drawings, specifications, or other data (1) are, and remain the property of Amphenol corp. (2) must be returned upon request; and (3) are confidential and not to be disclosed to any person other than those to whom they are given by Amphenol Corp. the furnishing of these drawings, specifications, or other data by Amphenol Corp., or to any other person to anyone for any purpose is not to be regarded by implicatioin or otherwise in any manner licensing, granting rights to permitting such holder or any other sperson to manufacture, use or sell any product, process or design, patented or otherwsie, that may in any way be related to or disclosed by said drawings, specifications, or other data.

MATERIAL

SEE NOTES

REFERENCE

EAR 967292-0

CONFIGURATION LEVEL:

FINISH

DRAWN

I.XU

ENGINEER

CISSY

APPROVED

S.HSIEH

I:/MCX /MCX1112A1-3GT30G-316U-50

DATE

06-Jan-12

DATE

24-July-08

DATE

06-Jan-12

TITLE

MCX R/A CRIMP PLUG
FOR RG-174/U,188A/U,
316U CABLE

SCALE: 5.0:1.0

DWG SIZE

B

SHEET

2 OF 2

REV

H

Amphenol RF

Danbury CT USA, Tainan, Taiwan, Shenzhen, China
www.amphenolrf.com

DRAWING NO.MCX1112A1-3GT30G-316U-50

ITEM NO. 081112AAA36GE5F

PART NO.919-104P-51AX

Mouser Electronics

Authorized Distributor

Click to View Pricing, Inventory, Delivery & Lifecycle Information:

[Amphenol:](#)

[919-104P-51AX](#)