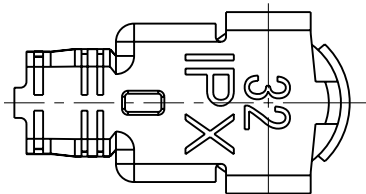


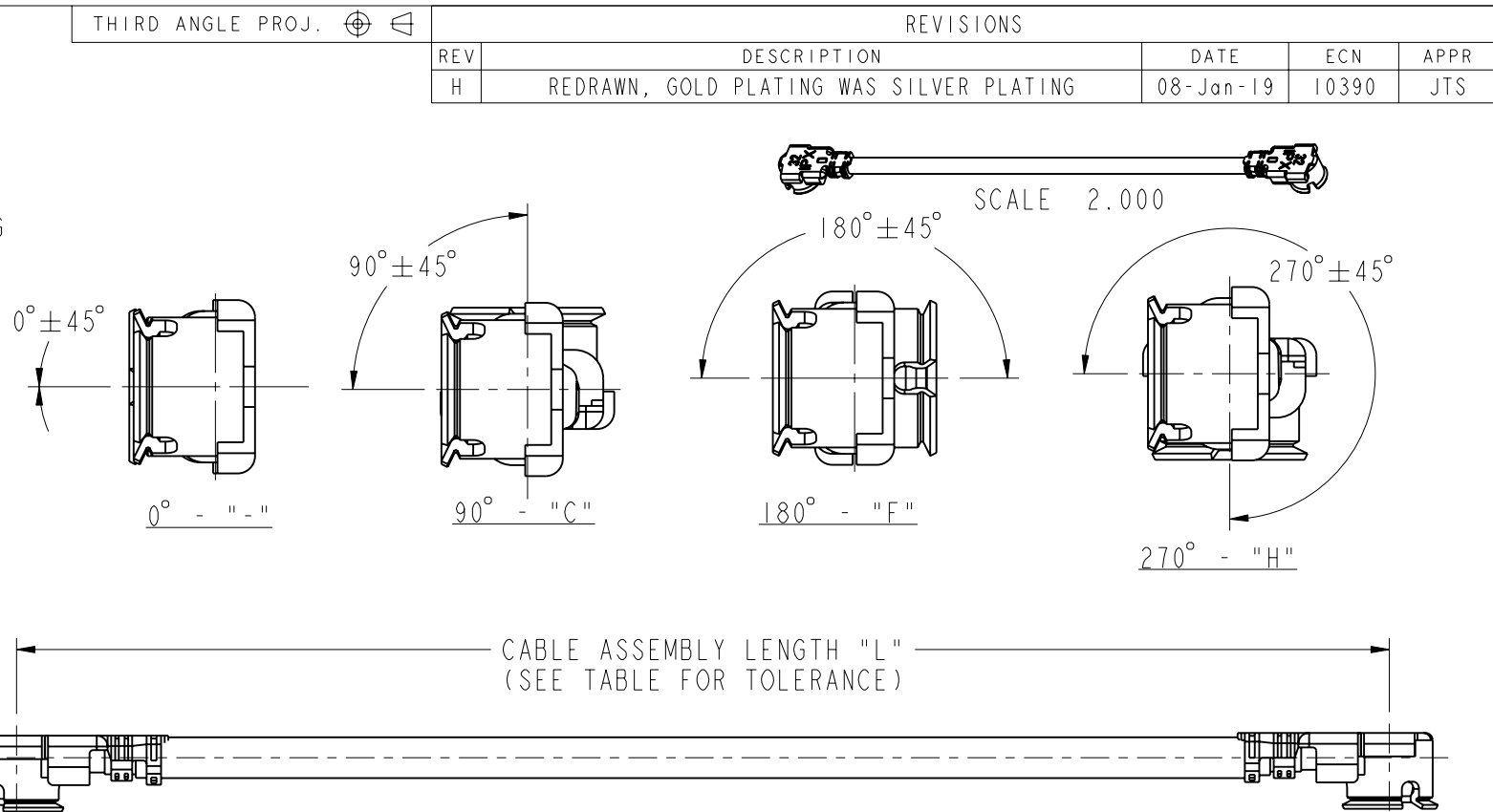
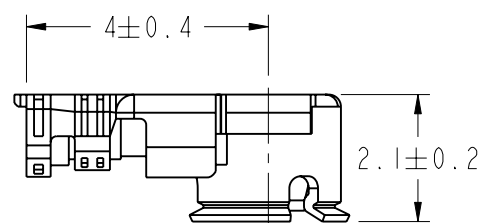
I. ELECTRICAL:

- A. IMPEDANCE: 50 Ω (NOMINAL)
- B. FREQUENCY RANGE: 0-6 GHz
- C. CONTACT RESISTANCE: CENTER: 20 m Ω MAX.: MEASURED AT 10mA MAX., 25 m Ω MAX AFTER CYCLING
OUTSIDE: 10 m Ω MAX.: MEASURED AT 10mA MAX., 15 m Ω MAX AFTER CYCLING
- D. INSULATION RESISTANCE: 500 M Ω MIN.: MEASURED AT 100V DC.
- E. WITHSTANDIN VOLTAGE: NO LINE OR INSULATION BREAKDOWN: 200V AC FOR 1 MIN.
- F. V.S.W.R. : 1.3 MAX. AT DC TO 3 GHz, $\sqrt{1.4}$ MAX. AT 3 TO 6 GHz $\sqrt{\quad}$
- G. TYPICAL INSERTION LOSS : 0.0022*L* Frequency in GHz]+0.087* Frequency in GHz]

3. MATERIALS AND FINISHES(PLATING THICKNESS IN MICRO-INCHES):
 CONNECTOR BODY: PHOSPHOR BRONZE, AU 0.05 μ m MIN. PLATED OVER NI 1.0 μ m MIN.
 CONNECTOR CENTER CONTACT: PHOSPHOR BRONZE , AU 0.1 μ m MIN. PLATED OVER NI 1.0 μ m MIN.
 CONNECTOR INSULATOR: PBT, UL94V-0, BLACK
 CABLE JACKET: FEP
 CABLE DIELECTRIC: FEP
 CABLE CENTER CONDUCTOR: COPPER WIRE STRANDED, SILVER PLATED
 CABLE OUTER CONDUCTOR: COPPER WIRE BRAID, TIN PLATING



CABLE ASSEMBLY OVERALL LENGTH TOLERANCE	
OVERALL LENGTH L (mm)	STANDARD TOLERANCE (mm)
20 ≤ L < 35	± 2
35 ≤ L < 200	± 4
200 ≤ L < 500	± 8
500 ≤ L < 1000	± 12
1000 ≤ L	± 1.5 %



The diagram illustrates the PAX 32-XXX-YYY cable marking system. The cable is shown with a marking 'A-1PAX132-XXX-YYY' and lines pointing to each part of the code with descriptive text.

- A**: AMC RIGHT ANGLE PLUG
- : CONNECTOR ORIENTATION
 - = 0°
 - F = 180°
 - C = 90°
 - H = 270°
 - G = LEGACY, DO NOT USE FOR NEW DESIGNS
- 1**: CABLE TYPE (132 = 1.32MM CABLE)
- PAX**: CABLE LENGTH IN MM (L < 1000MM)
 - EXAMPLE : 020 = 20MM
 - 150 = 150MM
 - CHANGE "-" TO "X" (L >= 1000MM)
 - EXAMPLE : 1020 = 1020MM
- 132**: CABLE LENGTH IN MM (L < 1000MM)
- : CABLE COLOR
 - A = ORANGE
 - B = BLACK
 - C = CURRY
 - E = GREEN
 - G = GRAY
 - N = BROWN
 - P = PURPLISH RED
 - R = RED
 - U = BLUE
 - W = WHITE
 - Y = YELLOW
- XXX**: NUMBER OF TERMINATED ENDS (1 OR 2)
- YYY**: CABLE COLOR

ALL OTHER SHEETS ARE FOR INTERNAL USE ONLY

UNLESS OTHERWISE SPECIFIED, DIMENSIONS ARE IN METRIC AND TOLERANCES ARE: <0.5mm 0.5 - 6mm 6 - 30mm 30 - 120mm ANGLES ± 0.05mm ±0.1mm ±0.2mm ± 0.3mm ±1°					MATERIAL	DRAWN	DATE	TITLE AMC PLUG TO AMC PLUG JUMPER ASSEMBLY ON 1.32MM CABLE		Amphenol RF www.amphenolrf.com	
NOTICE - These drawings, specifications, or other data (1) are, and remain the property of Amphenol corp. (2) must be returned upon request; and (3) are confidential and not to be disclosed to any person other than those to whom they are given by Amphenol Corp. the furnishing of these drawings, specifications, or other data by Amphenol Corp., or to any other person to anyone for any purpose is not to be regarded by implication or otherwise in any manner licensing, granting rights to permitting such holder or any other person to manufacture, use or sell any product, process or design, patented or otherwise, that may in any way be related to or disclosed by said drawings, specifications, or other data.	JEKY	29-Jan-19									
	ENGINEER	DATE	DRAWING NO. A-1PAX132-XXXXZ								
	FIGO	29-Jan-19	ITEM NO. A-1PAX132-XXXXZ								
	APPROVED	DATE	PART NO. A-1PAX132-XXXXZ								
FIGO	14-Feb-19	SCALE: 3.0:1.0	SHEET 2 OF 2	REV	H						
CONFIGURATION LEVEL: In Work	CAD FILE	DWG SIZE	B								
FINISH											

Mouser Electronics

Authorized Distributor

Click to View Pricing, Inventory, Delivery & Lifecycle Information:

[Amphenol:](#)

[A-1PA-132-025B2](#)