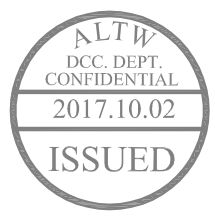
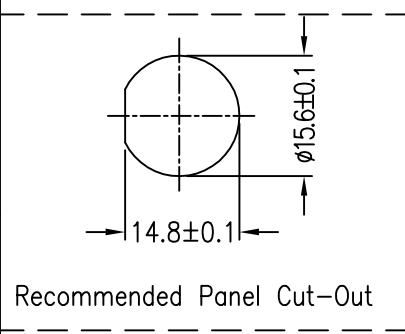
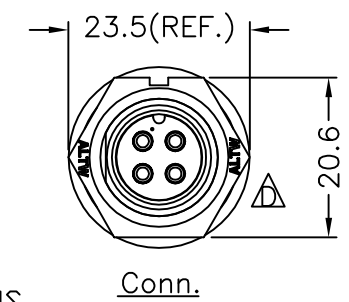
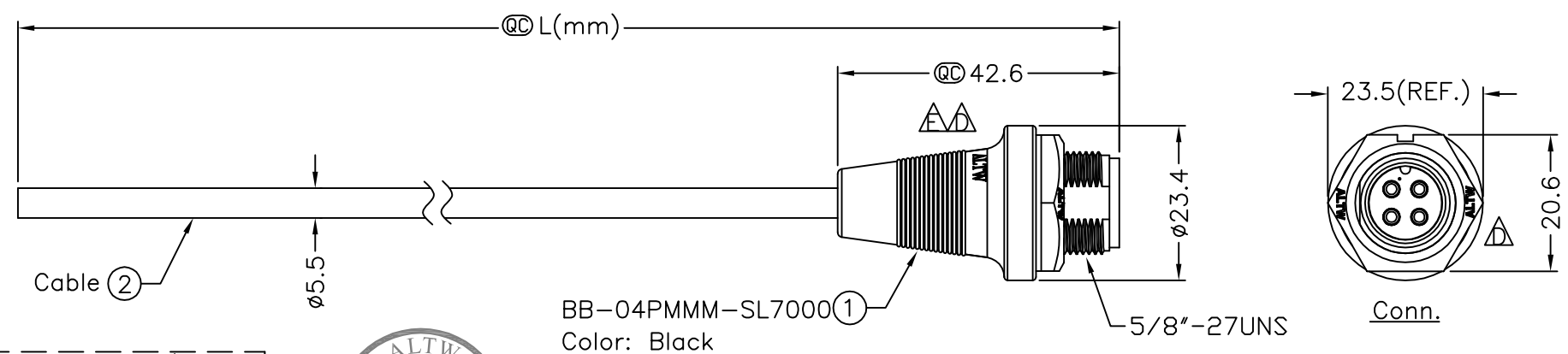
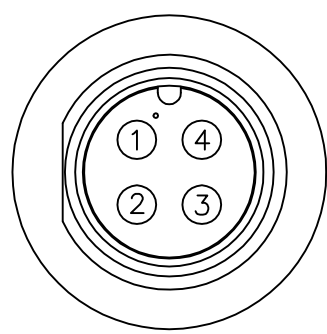


REV.	ECN NO.	DATE	SIGN	DESCRIPTION
C	LEN-960141~144	2009/05/31	Li Xiu Zhi	Add Pin Out
D	LEN1610313~316	2016/01/20	Ruru	Change Logo
E	LEN1790394~397	2017/09/27	Ruru	Update View



BB-04PMMM-SL7AXX
XX:01~99Meter
01:01Meter
02:02Meters
⋮
99:99Meters
Cable Length(L):01~99Meters

- Note:
- * @@Important Dimensions To Check.
 - * Waterproof Rate: IP67
 - * Housing: Black,Nylon+GF
 - * Male Pin: Copper Alloy,Gold Plated
 - * Nut: Black,Nylon+GF
 - * Gasket: Black,EPDM
 - * Cable: UL2464 20AWG*4C+Drain+Al/My Black,UV Resistant,OD=5.5
 - * Cable Length Tolerance:01M:±40mm
02M~05M:±60mm
06M~10M:±100mm
11M~30M:±200mm
31M~99M:±500mm
 - * Use with waterproof cap or dust cap
Panel Thickness Max: 2.5mm
 - * Use without waterproof cap or dust cap
Panel Thickness Max: 3.5mm



White	白	4
Black	黑	3
Blue	藍	2
Brown	棕	1
Wire Color		Conn

UNIT:mm	TOLERANCE ±0.5 mm		TITLE Standard,Cable Screw 4Pin M Conn. M Pin	
SCALE Free	SHEET 1 OF 1	REV. E	SIZE A4	QC :Inspection Item

ITEM NO		DRAWN BY Ruru	DATE 2017/09/27
DWG NO BB-04PMMM-SL7AXX		CHECKED BY Rita	DATE 2017/09/27
CUSTOMER ALTW		APPROVED BY Max	DATE 2017/09/27

Amphenol LTW
安費諾亮泰企業股份有限公司

THIS DOCUMENT IS SUBJECT TO CHANGE WITHOUT NOTICE. IT IS CONFIDENTIAL AND A PROPERTY OF Amphenol LTW. DISCLOSURE TO THIRD PARTY HAS TO BE AUTHORIZED BY Amphenol LTW.

Mouser Electronics

Authorized Distributor

Click to View Pricing, Inventory, Delivery & Lifecycle Information:

[Amphenol:](#)

[BB-04PMMM-SL7A05](#) [BB-04PMMM-SL7A10](#) [BB-04PMMM-SL7A01](#) [BB-04PMMM-SL7A02](#)