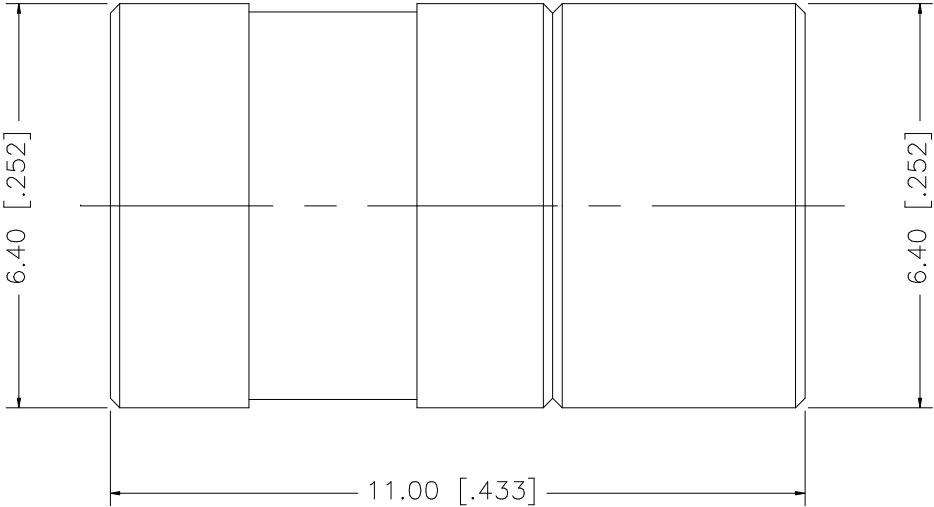


REV.	DATE	DESCRIPTION
NC	06/13/05	INITIAL RELEASE



					UNLESS OTHERWISE SPECIFIED DIMENSIONS ARE IN MILLIMETERS. DIMENSIONS IN [ ] ARE IN INCHES AND FOR CUSTOMER REFERENCE ONLY.	APPROVALS	DATE	Amphenol Connex					
8					UNLESS OTHERWISE SPECIFIED TOLERANCES FOR MILLIMETERS ARE: 0.5 – 8mm ± 0.20mm 8 – 30mm ± 0.40mm 30 – 120mm ± 0.50mm  UNLESS OTHERWISE SPECIFIED TOLERANCES FOR INCHES ARE: .020 – .315 = ± 0.007” .315 – 1.180 = ± 0.015” 1.180 – 4.724 = ± 0.020”	DRAWN	G.R.S.						06/13/05
7						CHECKED							
6						ISSUED							
5	COVER	BRASS	GOLD	1		SHEET	1 OF 1		PART DESCRIPTION				
4	RESISTOR	100R	2 WATT – 1%	1					SMB TERMINATOR PLUG				
3	CONTACT PIN	BER. COPPER	GOLD	1				PART NO.					
2	INSULATOR	TEFLON	NATURAL	1				142334					
1	BODY	BRASS	GOLD	1									
	DESCRIPTION	MATERIAL	FINISH	QTY	DO NOT SCALE DRAWING	CAD FILE C:/142/142334.DWG		DWG. NO. 142334.DWG		REV. NC	SIZE A	SCALE NA	

# Mouser Electronics

Authorized Distributor

Click to View Pricing, Inventory, Delivery & Lifecycle Information:

[Amphenol:](#)

[142334](#)