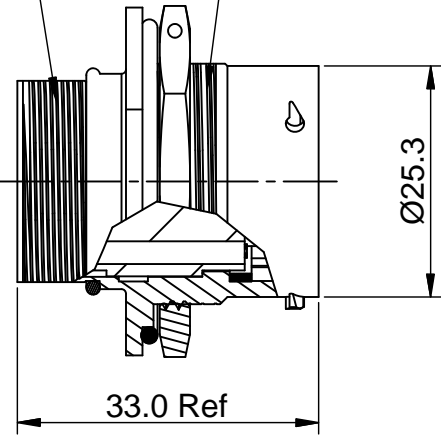


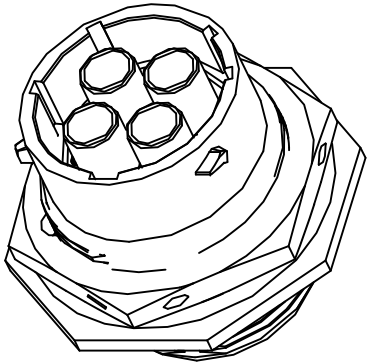
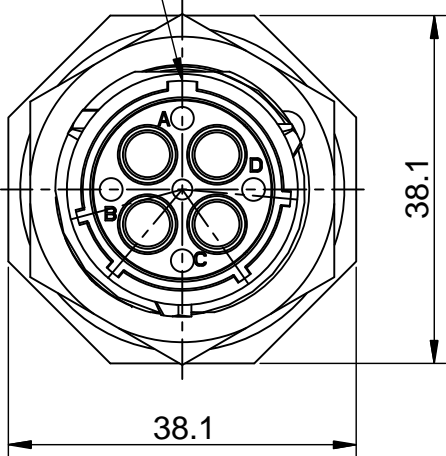
REVISIONS					
REV	ECO	DESCRIPTION	DATE	BY	APPR
B1	-	RELEASED DRAWING	JUN-26-2014	BEN	TOMMY

15/16-20 UNEF THREAD

1" 1/8-18 UNEF THREAD

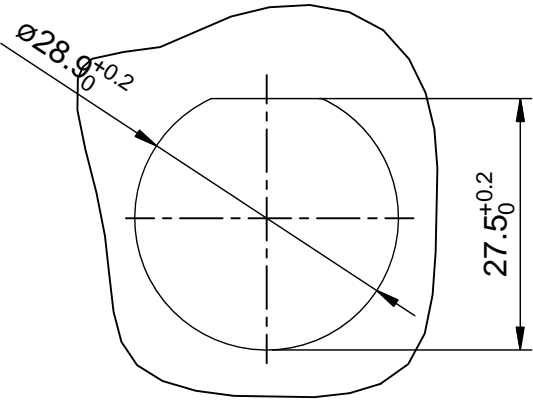


MASTER KEYWAY



NOTES : (UNLESS OTHERWISE SPECIFIED)

- MATERIAL :  
SHELL : ZINC ALLOY , NICKEL PLATED.  
INSERT : THERMOPLASTIC , UL94 V-0.  
O-RING : NBR/SILICONE RUBBER.  
SEAL GASKET : NBR/SILICONE RUBBER.  
NUTS : AL ALLOY , NICKEL PLATED.
- SPECIFICATIONS :  
2.1 RATED CURRENT : 45A (MAX).  
2.2 RATED VOLTAGE : 500V(AC/DC).  
2.3 OPERATING TEMPERATURE : SEE CHART.  
2.4 DIELECTRIC WITHSTANDING VOLTAGE : LESS THAN  
2 MILLIAMPS CURRENT LEAKAGE@2000 VOLTS AC.  
2.5 INSULATION RESISTANCE : 5000 MEGOHMS MIN.  
2.6 IP--CLASS : IP67.  
2.7 MATING CYCLES DURABILITY : 500 CYCLES MIN.  
2.8 ROHS COMPLIANT.
- SUITABLE CONTACTS : 8# CONTACTS.
- ALL DIMENSIONS ARE FOR REFERENCE USE ONLY.



PANEL CUT OUT REFERENCE

KEY POS	PART NUMBER	
	-40°C ~ 105°C	-40°C ~ 125°C
N	RT07164SNH	RT07164SNH03
W	RT07164SWH	RT07164SWH03
X	RT07164SXH	RT07164SXH03
Y	RT07164SYH	RT07164SYH03
Z	RT07164SZH	RT07164SZH03

	SEE PART NUMBER				
CHART		PART NUMBER		DESCRIPTION	
QUANTITY	PART NUMBER				ITEM
MATERIALS LIST					
<div>UNLESS OTHERWISE SPECIFIED</div> <div>1) All dimensions are in metric(mm).</div> <div>2) Tolerances are as follows:</div> <div>1 PL DEC ±0.30</div> <div>2 PL DEC ±0.15</div> <div>3 PL DEC ±0.08</div> <div>3) Note reference = </div>		<div>SIGNATURES</div> <div>DRAWN: BEN</div> <div>CHECKED:</div> <div>ENGINEER:</div> <div>APPROVAL:</div>		<div>DATE</div> <div>JUN-26-2014</div>	
MATERIAL SPECIFICATIONS:		CUSTOMER:		<div>Amphenol</div> <div>Sine Systems - <a href="http://www.amphenol-sine.com">www.amphenol-sine.com</a></div> <div>44724 Morley Drive</div> <div>Clinton Township, MI 48036</div>	
PROCESS SPECIFICATIONS:		THIS DRAWING IS SUPPLIED FOR INFORMATION ONLY. DESIGN FEATURES, SPECIFICATIONS AND PERFORMANCE DATA SHOWN HEREON ARE THE PROPERTY OF THE AMPHENOL CORPORATION. NO RIGHTS OF REPRODUCTION ARE IMPLIED. ALL DIMENSIONS ARE SUBJECT TO NORMAL MANUFACTURING VARIATIONS.		ECO-MATE,RECEPTACLE, JAM NUT, SIZE 16,19POS,SOCKET.	
NEXT ASSY:		SCALE: NONE		<div>SIZE</div> <div>B</div> <div>TYPE</div> <div>C-</div> <div>DWG NO:</div> <div>RT07164S*H*</div> <div>REVISION</div> <div>B1</div>	
				SHEET 1 OF 1	

TITLE: ECO-MATE,RECEPTACLE, JAM NUT,SIZE 16,19POS,SOCKET.

DWG NO:

RT07164S\*H\*

REV: B1

SH: 1

OF: 1

# Mouser Electronics

Authorized Distributor

Click to View Pricing, Inventory, Delivery & Lifecycle Information:

[Amphenol:](#)

[RT07164SWH](#) [RT07164SXH](#)