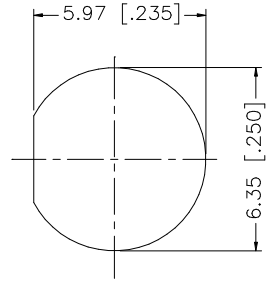
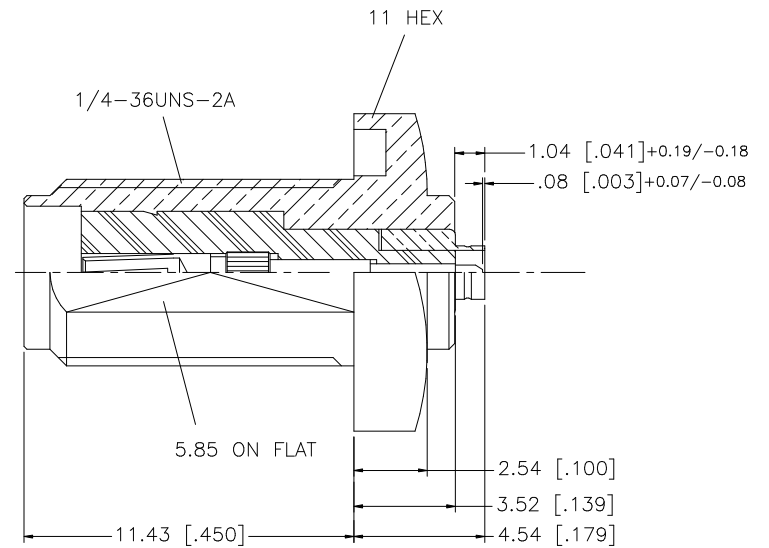
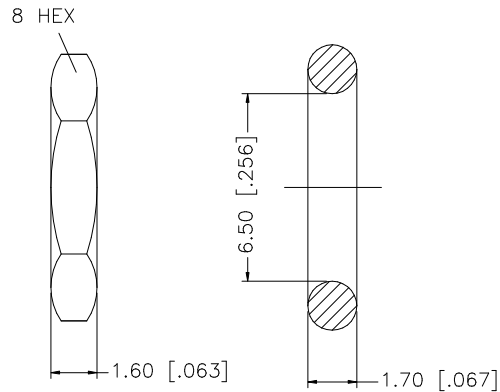
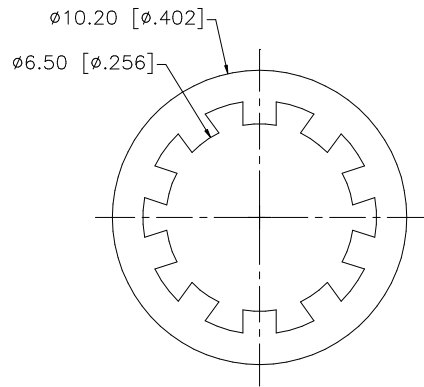


REV.	DATE	DESCRIPTION
NC	05/28/07	INITIAL RELEASE



RECOMMENDED
MOUNTING HOLE



NOTE:
1. MAX. PANEL THICKNESS = 3.8mm

8					<div>UNLESS OTHERWISE SPECIFIED DIMENSIONS ARE IN MILLIMETERS. DIMENSIONS IN [] ARE IN INCHES AND FOR CUSTOMER REFERENCE ONLY.</div> <div>UNLESS OTHERWISE SPECIFIED TOLERANCES FOR MILLIMETERS ARE: 0.5 – 8mm ± 0.20mm 8 – 30mm ± 0.40mm 30 – 120mm ± 0.50mm</div> <div>UNLESS OTHERWISE SPECIFIED TOLERANCES FOR INCHES ARE: .020 – .315 = ± 0.007" .315 – 1.180 = ± 0.015" 1.180 – 4.724 = ± 0.020"</div> <div>DO NOT SCALE DRAWING</div>	APPROVALS		DATE		<div>Amphenol Connex</div>								
7						DRAWN	G.R.S.	05/28/07										
6	HEX NUT	BRASS	GOLD	1		CHECKED												
5	LOCK WASHER	BRASS	GOLD	1			ISSUED				PART DESCRIPTION							
4	GASKET	SILICONE	RED	1			SHEET	1 OF 1			SMA JACK TO U.FL MALE ADAPTER							
3	CONTACT PIN	BER. COPPER	GOLD	1							—							
2	INSULATOR	TEFLON	NATURAL	1							PART NO.							
1	BODY	BRASS	GOLD	1							242201							
	DESCRIPTION	MATERIAL	FINISH	QTY			CAD FILE	C:/242/242201.DWG		DWG. NO.	242201.DWG		REV.	NC	SIZE	A	SCALE	NA

Mouser Electronics

Authorized Distributor

Click to View Pricing, Inventory, Delivery & Lifecycle Information:

[Amphenol:](#)

[242201](#)