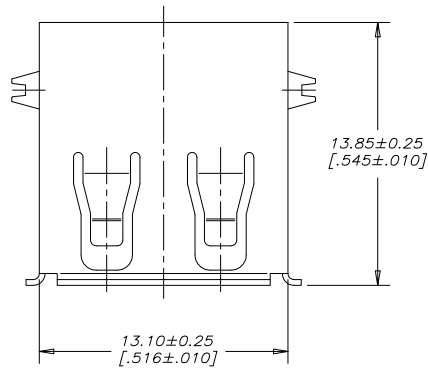
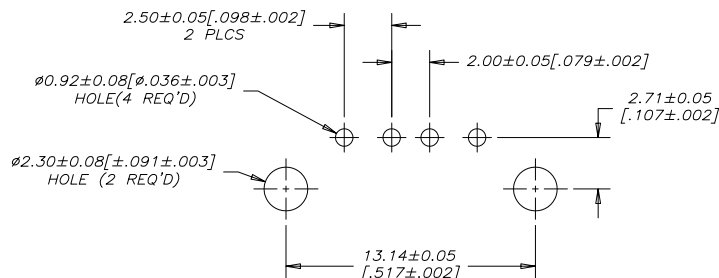
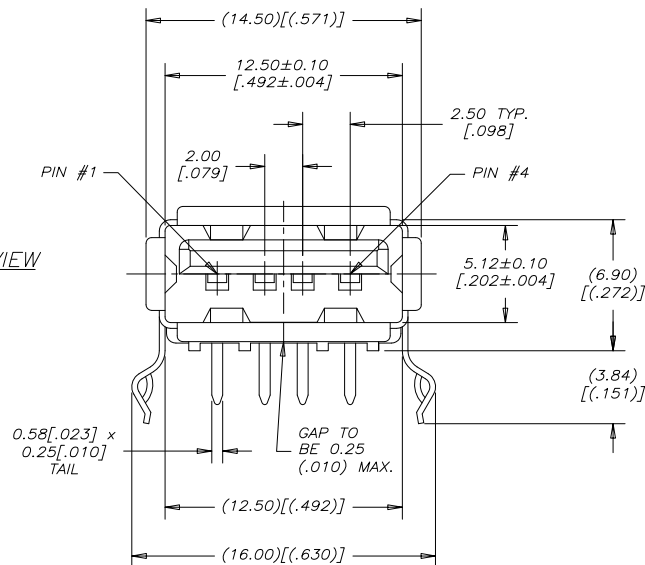


TOP VIEW



FRONT VIEW



RECOMMENDED PC BOARD LAYOUT
COMPONENT SIDE OF BOARD

AMPHENOL PART NUMBER: U E 2 7 - A C X 4 - X O X

SERIES

UE27 = USB 2.0 RECEPTACLE,
RoHS COMPLIANT

TYPE

A = SERIES A

STYLE

C = RIGHT ANGLE PCB

CONTACT PLATING OPTION

5 = 0.76 MICRONS [30µin] MIN. GOLD OVER 1.27 MICRONS [50µin] MIN. NICKEL ON CONTACT MATING AREA.
2.54 MICRONS [100µin] TIN PLATING ON CONTACT TAILS.
7 = GOLD FLASH OVER 1.27 MICRONS [50µin] MINIMUM NICKEL ON CONTACT MATING AREA.
2.54 MICRONS [100µin] TIN PLATING ON CONTACT TAILS.

MODIFIER

0 = PBT HOUSING
H = HIGH TEMPERATURE HOUSING
(MAXIMUM TEMPERATURE RATING
260°C FOR 10s)

SHIELDING STYLE

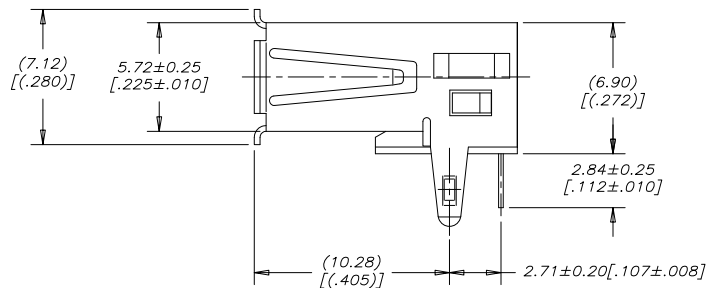
0 = NO REAR SHIELD

COLOUR

1 = BLACK
2 = BEIGE (AVAILABLE FOR PBT HOUSING ONLY)

NUMBER OF CONTACTS

4 = 4 CONTACTS



SIDE VIEW

NOTES:

ALL PARTS ARE RoHS COMPLIANT PER EU DIRECTIVE
2011/65/EU AND AMENDMENTS

HOUSING: ENGINEERING THERMOPLASTIC, FLAMMABILITY
RATING UL94V-0., SEE PART NUMBER ORDERING
CODE FOR OPTIONS.

CONTACTS: COPPER ALLOY.
CONTACT PLATING: SEE PART NUMBER
ORDERING CODE FOR OPTIONS.

SHELL: COPPER ALLOY.
PLATING: NICKEL OVER COPPER UNDERPLATE.

OPERATING TEMPERATURE: -40°C TO +85°C



UNLESS SPECIFIED OTHERWISE		DRAWN CHIGOW XU	05/12/05	Amphenol Canada Corp. www.amphenolcanada.com	
PRIMARY UNITS MILLIMETERS		CHECKED PAUL WANG	05/12/05		
SECONDARY INCHES		M.E. APP'D		UE27 SERIES USB RECEPTACLE, SERIES A, RIGHT ANGLE PCB TAIL, RoHS COMPLIANT	
REFERENCE IN PARENTHESES		Q.A. APP'D			
GENERAL TOLERANCES		DWG APP'D		P-UE27-ACX4-XOX	
1 DECIMAL PLACE		ENG. REL. NO. EAR 12884			
2 DECIMAL PLACES ±0.25		REF.		DO NOT SCALE DRAWING	
3 DECIMAL PLACES		THIRD ANGLE PROJECTION			
ANGULAR DEGREES				CODE ID NO. 03554 DWG SIZE X SCALE 5:1 SHEET 1 OF 1	

Mouser Electronics

Authorized Distributor

Click to View Pricing, Inventory, Delivery & Lifecycle Information:

[Amphenol:](#)

[UE27AC7410H](#)