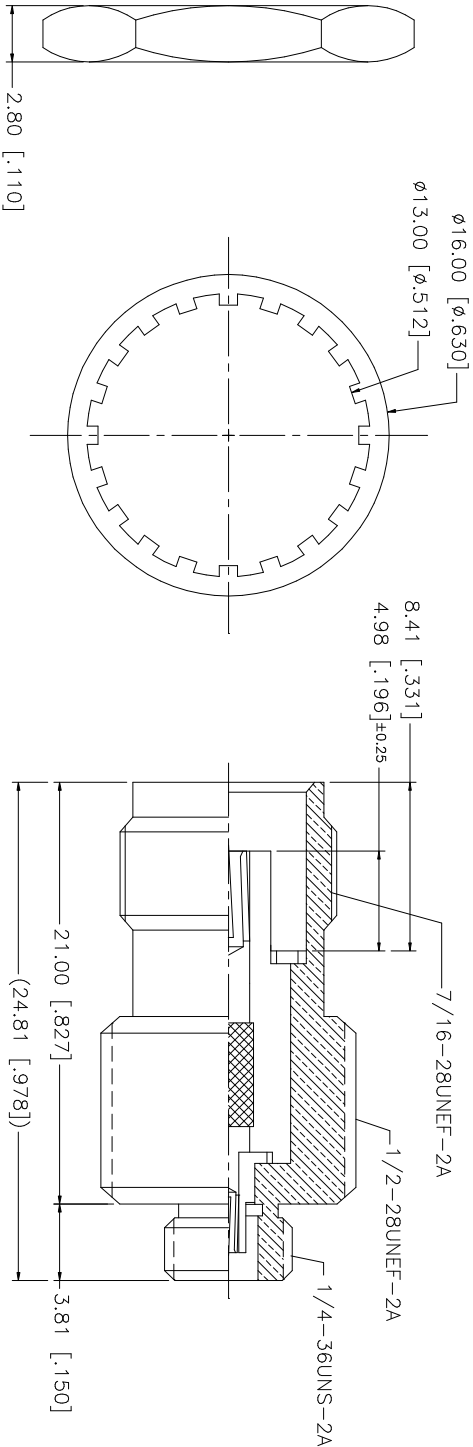


REV.	DATE	DESCRIPTION
A	12/05/02	ADD 1/4-36UNS-2A MATING FACE
B	01/29/03	MODIFY OVERALL BODY DIMENSIONS
C	03/18/04	ADD LOCK RING DIMENSION



NOTES:

1. MAX. PANEL THICKNESS = 6.5mm

					UNLESS OTHERWISE SPECIFIED DIMENSIONS ARE IN MILLIMETERS. DIMENSIONS IN [] ARE IN INCHES AND FOR CUSTOMER REFERENCE ONLY. UNLESS OTHERWISE SPECIFIED TOLERANCES FOR MILLIMETERS ARE: 0.5 – 8mm ± 0.20mm 8 – 30mm ± 0.40mm 30 – 120mm ± 0.50mm UNLESS OTHERWISE SPECIFIED TOLERANCES FOR INCHES ARE: .020 – .315 = ± 0.007" .315 – 1.180 = ± 0.015" 1.180 – 4.724 = ± 0.020"						
8											
7											
6	LOCK RING	BRASS	NICKEL	1							
5	HEX NUT	BRASS	NICKEL	1							
4	LOCK WASHER	BRASS	NICKEL	1							
3	INSULATOR	TEFLON	NATURAL	1							
2	CONTACT PIN	BER. COPPER	GOLD	1							
1	BODY	BRASS	GOLD	1							
	DESCRIPTION	MATERIAL	FINISH	QTY		DO NOT SCALE DRAWING					
						APPROVALS	DATE				
						DRAWN	G.R.S.	03/18/04			
						CHECKED					
						ISSUED					
						SHEET	1 OF 1				
						CAD FILE	C:/242/242190.DWG				
						DWG. NO.	242190.DWG	REV.	C	SIZE	A
						PART NO.	242190	SCALE	NA		
						TNC BULKHEAD JACK TO MCX JACK ADAPTER					
						PART DESCRIPTION					
						Amphenol Connex					

Mouser Electronics

Authorized Distributor

Click to View Pricing, Inventory, Delivery & Lifecycle Information:

[Amphenol:](#)

[242190](#)