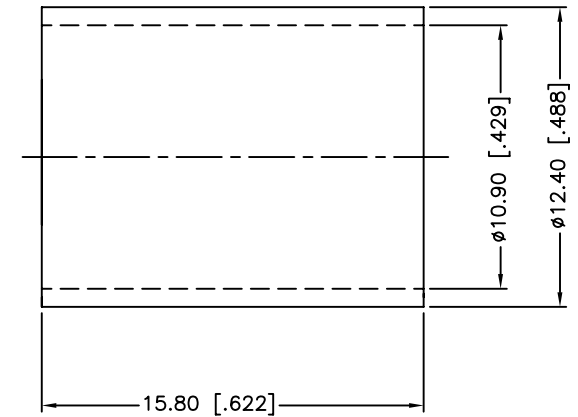
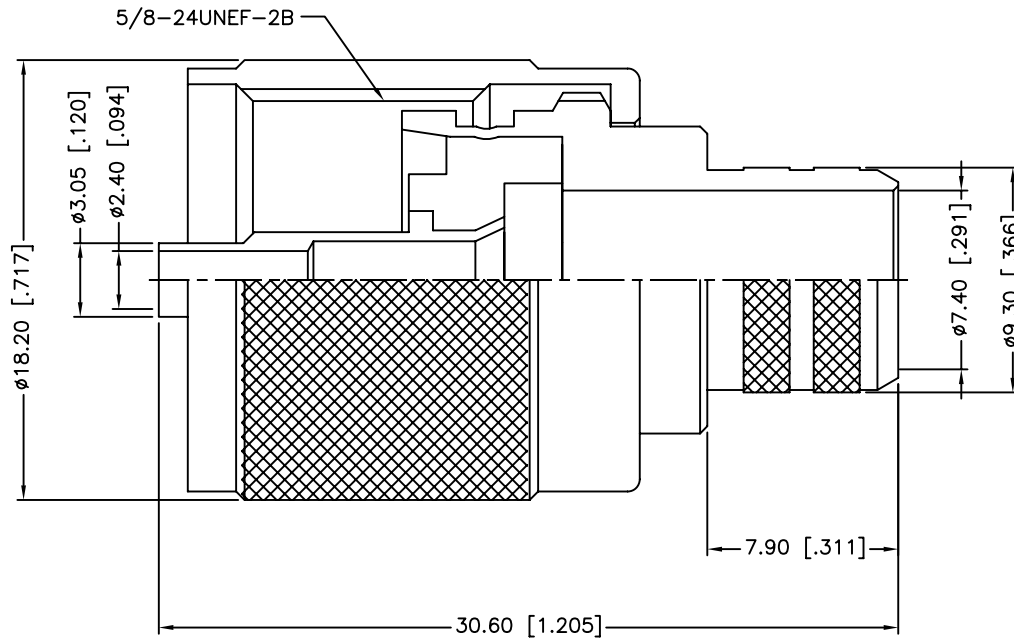


RECOMMENDED
CABLE STRIPPING DIM'S



REV.	DATE	ECR NO.	DESCRIPTION
A	01/30/04	XXXXX	UPDATE DRAWING FORMAT
B	05/12/07	XXXXX	ADD CABLE DESCRIPTION
C	10/17/11	2241	CHANGE ALL COMPONENTS' FINISH

5	FERRULE	BRASS	NICKEL	1
4	CONTACT PIN	BRASS	SILVER	1
3	INSULATOR	PHENOLIC	NATURAL	1
2	BODY	BRASS	NICKEL	1
1	SHELL	BRASS	NICKEL	1
	DESCRIPTION	MATERIAL	FINISH	QTY

UNLESS OTHERWISE SPECIFIED DIMENSIONS ARE
IN MILLIMETERS. DIMENSIONS IN [] ARE IN
INCHES AND FOR CUSTOMER REFERENCE ONLY.

UNLESS OTHERWISE SPECIFIED
TOLERANCES FOR MILLIMETERS ARE:
0.5 - 8mm \pm 0.20mm
8 - 30mm \pm 0.40mm
30 - 120mm \pm 0.50mm

UNLESS OTHERWISE SPECIFIED
TOLERANCES FOR INCHES ARE:
.020 - .315 \pm 0.007"
.315 - 1.180 \pm 0.015"
1.180 - 4.724 \pm 0.020"

DO NOT SCALE DRAWING

APPROVALS	DATE
DRAWN M.ZHANG	10/17/11
CHECKED	
ISSUED	
SHEET 1 OF 1	
CAD FILE	C:/CONNEX/182102.DWG

Amphenol Connex

PART DESCRIPTION			
UHF CRIMP PLUG (FOR RG-8/U, 213/U CABLE)			
PART NO. 182102			
DWG. NO.	182102.DWG	REV. C	SIZE A
		SCALE	NA

Mouser Electronics

Authorized Distributor

Click to View Pricing, Inventory, Delivery & Lifecycle Information:

[Amphenol:](#)

[182102](#)