

NOTES:

1. MATERIALS AND FINISHES:  
CONTACT: BERYLLIUM COPPER, GOLD PLATED  
INSULATOR: PTFE  
BODY: BRASS, GOLD PLATED  
HEX-NUT AND LOCKWASHER: BRASS, NICKEL PLATED
2. MECHANICAL SPECIFICATIONS:  
MATING CYCLES: MINIMUM 500
3. ELECTRICAL SPECIFICATIONS:  
IMPEDANCE: 50 OHMS  
VOLTAGE RATING: 500 VOLTS RMS PEAK  
VSWR: 1.07 MAX. DC TO 3.5 GHz  
INSERTION LOSS: .3 dB MAX AT 3.5 GHz

102-100-01

DRAWING NO.

THIRD ANGLE PROJ.



REVISIONS

REV

DESCRIPTION

DATE

ECO

APPR

A

RELEASE TO MFG.

06/01/00

43401

C.A.

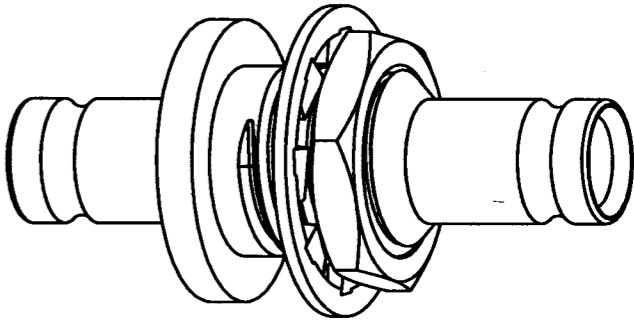
C

SEE SHEET 1

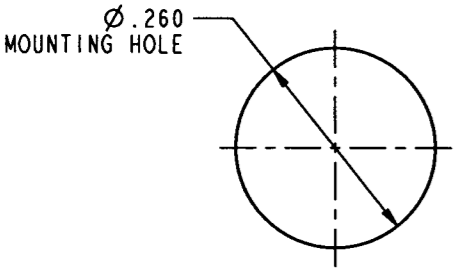
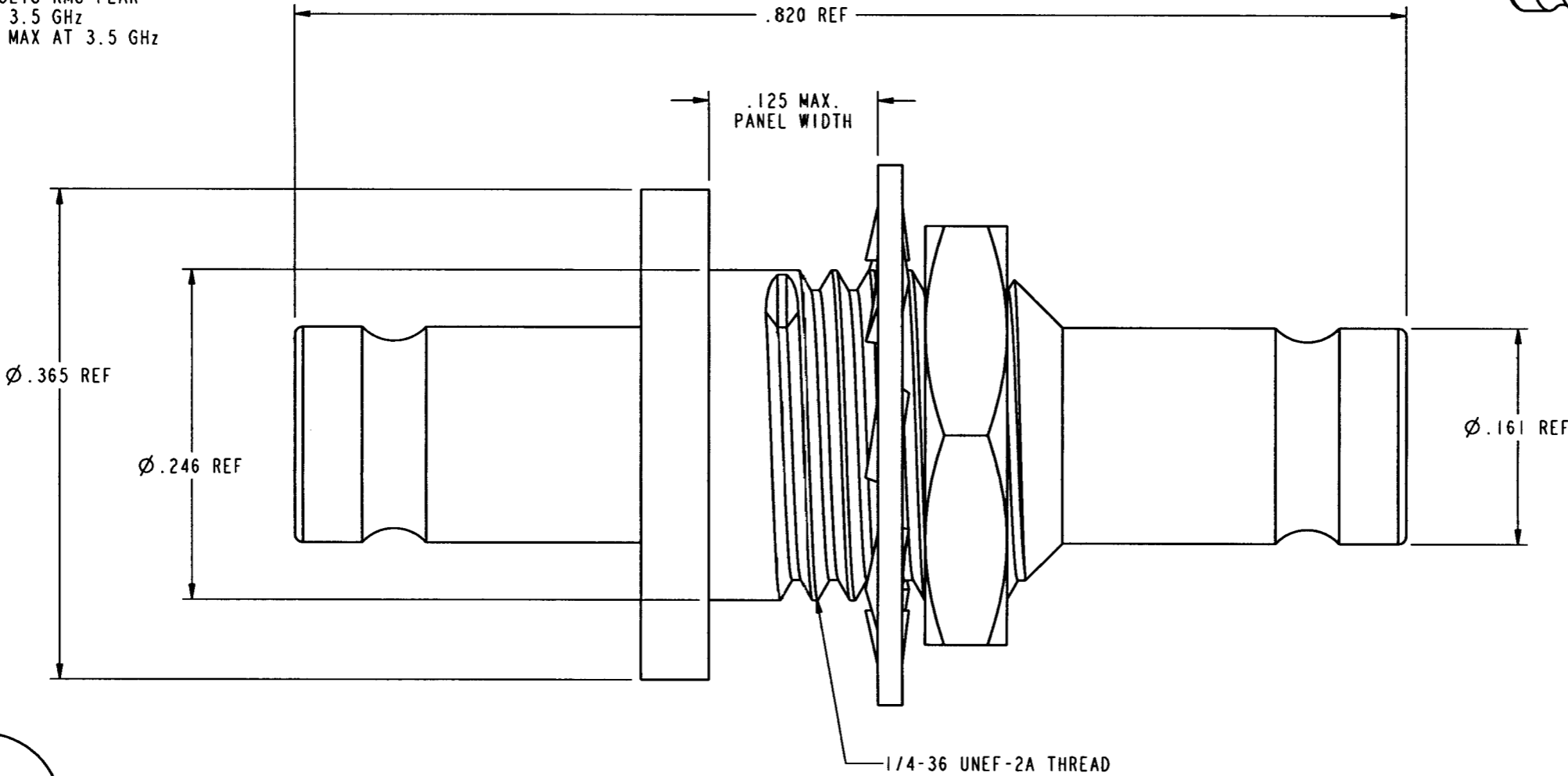
10/13/00

43545

CPM



SCALE 4.000



SCALE 4.000

CUSTOMER OUTLINE DRAWING  
FOR REFERENCE ONLY

UNLESS OTHERWISE SPECIFIED, DIMENSIONS ARE IN INCHES AND TOLERANCES ARE:  
2 PLACE DECIMAL 3 PLACE DECIMAL ANGLES  
±.015 (0.381 mm) ±.005 (0.127 mm) ± 1°

NOTICE - These drawings, specifications, or other data (1) are, and remain the property of Amphenol Corp. (2) must be returned upon request; and (3) are confidential and not to be disclosed to any person other than those to whom they are given by Amphenol Corp. The furnishing of these drawings, specifications, or other data by Amphenol Corp., or to any other person to anyone for any purpose is not to be regarded by implication or otherwise in any manner licensing, granting rights or permitting such holder or any other person to manufacture, use or sell any product, process or design, patented or otherwise, that may in any way be related to or disclosed by said drawings, specifications, or other data.

MATERIAL

DRAWN  
CARLOS ATHERTON

DATE  
01-JUNE-00

TITLE

ENGINEER  
CARLOS ATHERTON

DATE  
01-JUNE-00

1.0/2.3 JACK/JACK  
ADAPTER ASS'Y

APPROVED  
T. AUBIN

DATE  
06-JUNE-00

Amphenol

Amphenol Corporation  
Communication and Network  
Products Division  
Danbury, CT U.S.A. 06810

SCALE: 9.0:1 SHEET 2 OF 2

CAD FILE  
I:\1023\102-100-01

CODE ID  
74868

DWG SIZE  
B

DRAWING NO.  
102-100-01

REV  
C

# Mouser Electronics

Authorized Distributor

Click to View Pricing, Inventory, Delivery & Lifecycle Information:

[Amphenol:](#)

[102-100-01](#)