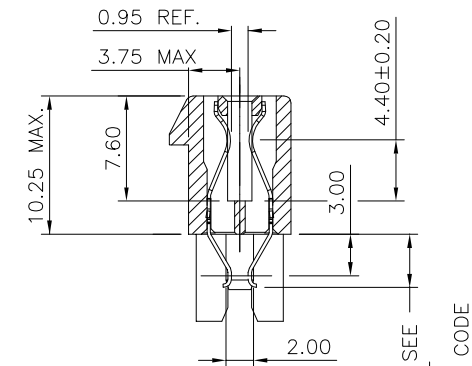
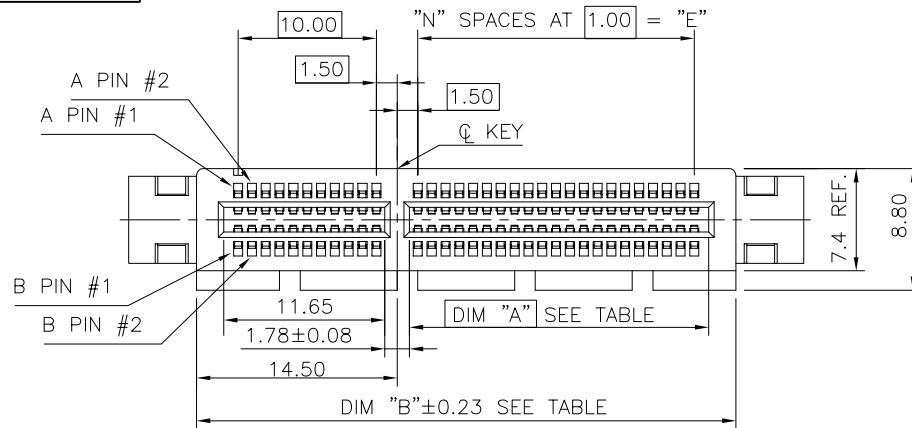
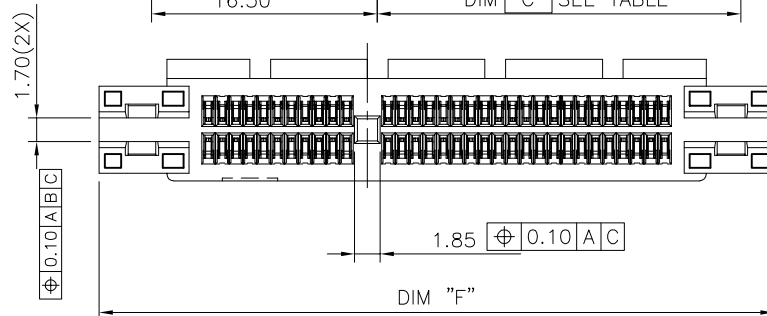
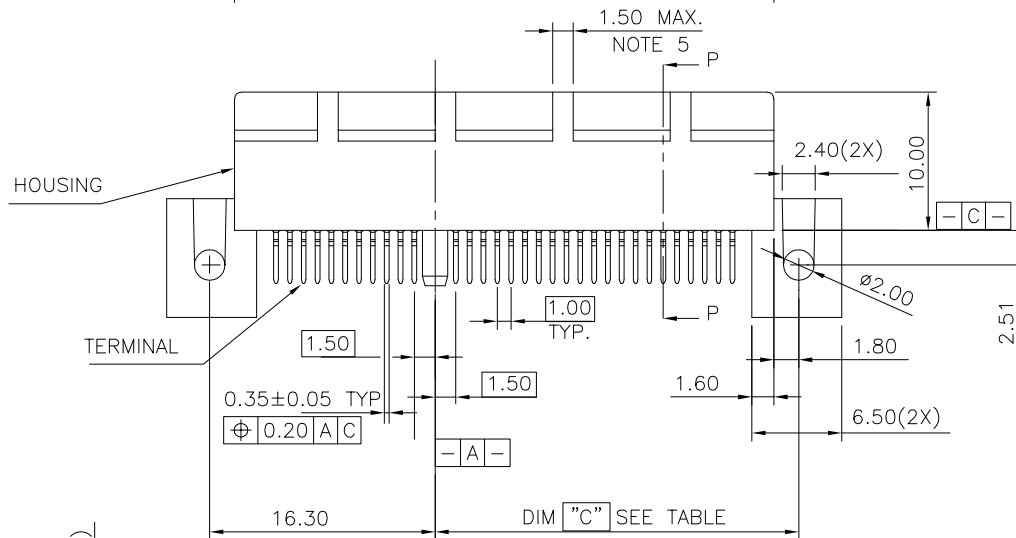
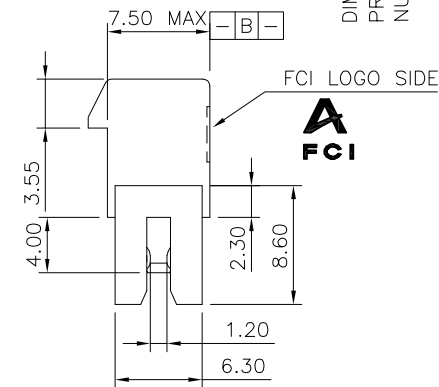




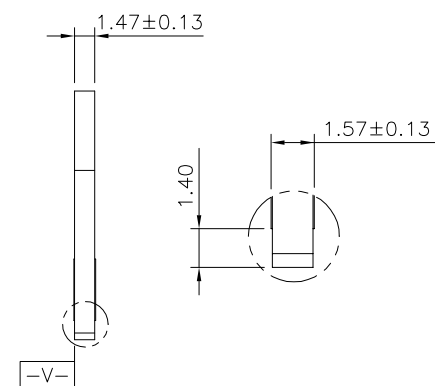
PRODUCT NO.
10025026



SECTION P-P



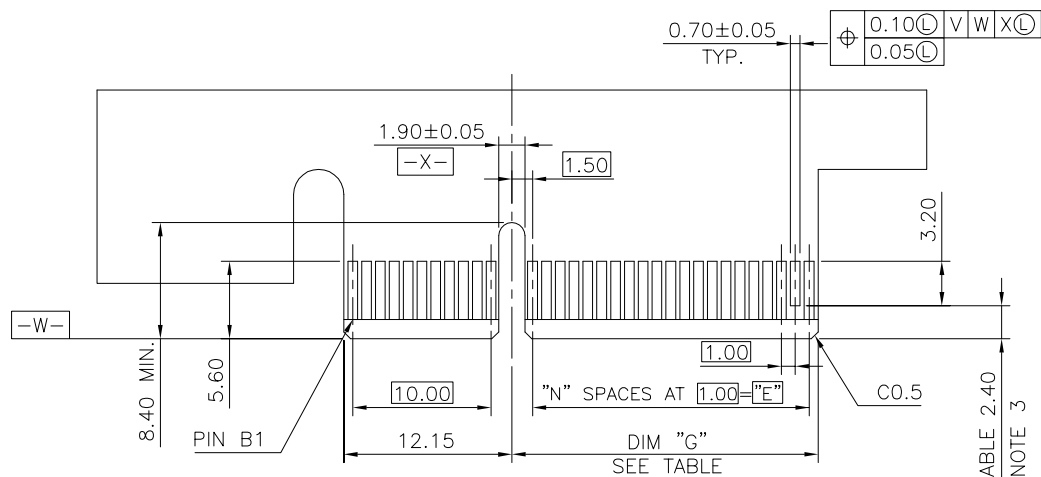
mat'l. code				surface <input checked="" type="checkbox"/> tolerance		projection		product family	
-				- ASME_Y14.5				PCI_EXPRESS	
ltr	ecn no	dr	date	tolerances unless otherwise specified				title	
F	T06-0179	M W	10/24/06	angles	linear			PCI_EXPRESS_CARD_EDGE_GEN3	
G	T06-0209	M W	12/08/06					STRADDLE_MOUNT_ASS'Y	
H	T10-0068	J H	5/26/10	±2'		scale N/A			
J	0G-008880	H T	12/12/11	dr	ZHENHUA_LIU	2016-03-25	dwg no		sheet 1 of 7
K	0G-23735	LZH	04/05/16	engr	ZHENHUA_LIU	2016-03-25	10025026		A4
L	0G-24598	LZH	07/28/16	chr	STONE_LI	2016-03-25	type		CUSTOMER Drawing
				appc	PM_ZHENG	2016-03-25			
sheet index	revision sheet	L	7						



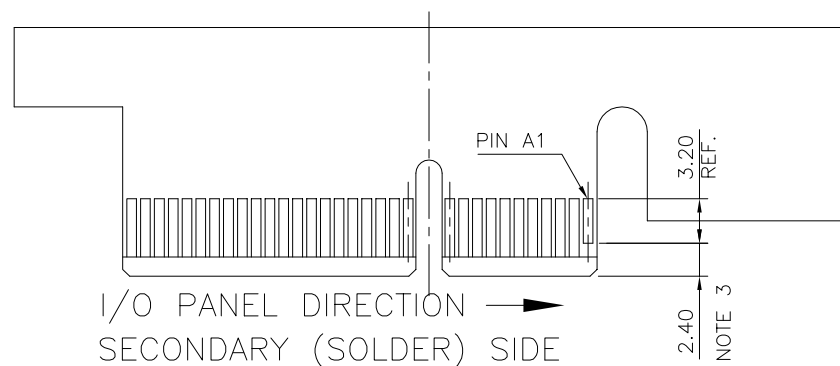
RECOMMEND OF PCB DIMENSIONS

#	POS REF.	N	DIM "H"	DIM "E"
36		6	12.30	6.00
64		20	26.30	20.00
98		37	43.30	37.00
164		70	76.30	70.00

[illegible]



I/O PANEL DIRECTION
PRIMARY (COMPONENT) SIDE



# POS REF.	N	DIM "G"	"F"
36	6	8.15	B17
64	20	22.15	B31
98	37	39.15	B48
164	70	72.15	B81

ADD-IN CARD EDGE-FINGER DIMENSIONS

mat'l. code				surface	tolerance	projection	product family
-				✓	ASME_Y14.5	⊕	PCI_EXPRESS
ltr	ecn no	dr	date	tolerances unless otherwise specified		MM	title
				angles	.0±0.20		PCI_EXPRESS_CARD_EDGE_GEN3
				±2'	.00±0.13		STRADDLE_MOUNT_ASS'Y
					.000±0.05	scale N/A	dwg no
				dr	ZHENHUA_LIU	2016-03-25	sheet 3 of 7
				enr	ZHENHUA_LIU	2016-03-25	size
				chr	STONE_LI	2016-03-25	10025026
				appd	PM_ZHENG	2016-03-25	A4
sheet	revision	L					type
index	sheet	7					CUSTOMER Drawing

NOTES:

1.MATERIAL: RATED.

HOUSING: HIGH TEMPERATURE NYLON, GLASS FILLED UL94V-0

TERMINAL: COPPER ALLOY

PLATING: SEE PRODUCT NUMBER CODE

METAL BOARD LOCKS: COPPER ALLOY

FINISH: 100u" TIN OVER 50u" NICKEL UNDERPLATE

2.PRODUCT SPECIFICATION: GS-12-233

③NO TIE BAR PERMITTED FROM CARD EDGE TO LEADING EDGE OF PAD FOR PINS A1 AND PIN NUMBERS "F".

④CHAMFER EDGES MUST BE FREE OF CUTTING BURRS.

⑤FREQUENCY & LOCATION AT SUPPLIER DISCRETION. RIDGE MAY BE CONTINUOUS WITH NO BREAKS.

6.RoHS COMPATIBLE PRODUCT SPECIFICATIONS

a - PLATING:

- "LF" MEANS THE PRODUCT IS LEAD-FREE

b - MANUFACTURING PROCESS COMPATIBILITY

- THE HOUSING WILL WITHSTAND EXPOSURE TO 260°C±5°C SOLDER BATH TEMPERATURE FOR 5 SECONDS IN A REFLOW SOLDER APPLICATION.

CONNECTOR	# POS	REF.	N	DIM "A"	DIM "B"	DIM "C"	"E"	"F"
1 PORT	36		6	7.65	25.00	12.30	6.00	34.8
4 PORT	64		20	21.65	39.00	26.30	20.00	48.8
8 PORT	98		37	38.65	56.00	43.30	37.00	65.8
16 PORT	164		70	71.65	89.00	76.30	70.00	98.8

PRODUCT NUMBER CODE

10025026 -x 0 x 0 x 1 □ □

HOUSING COLOR OPTIONS

0-NATURAL, HALOGEN

1-BLACK, HALOGEN

△ 2-NATURAL, HALOGEN FREE

3-BLACK, HALOGEN FREE

RESERVE

TERMINAL PLATING OPTIONS

0-50u" Ni UNDERPLATE

30u" Au CONTACT AREA

100u" TIN TAIL AREA ----- COMPATIBLE RoHS

1-50u" Ni UNDERPLATE

15u" Au CONTACT AREA

100u" TIN TAIL AREA ----- COMPATIBLE RoHS

2-50u" Ni UNDERPLATE

GOLD FLASH CONTACT AREA

100u" TIN TAIL AREA ----- COMPATIBLE RoHS

3-50u" Ni UNDERPLATE

30u" Au CONTACT AREA

100u" TIN/LEAD TAIL AREA ----- INCOMPLIANT RoHS

4-50u" Ni UNDERPLATE

15u" Au CONTACT AREA

100u" TIN/LEAD TAIL AREA ----- INCOMPLIANT RoHS

5-50u" Ni UNDERPLATE

GOLD FLASH CONTACT AREA

100u" TIN/LEAD TAIL AREA ----- INCOMPLIANT RoHS

PACKAGING OPTIONS

T: TRAY PACKAGING(IN GENERAL VERTICAL DIRECTION)

C: TAPE & REEL WITH INSERT CAP (FOR 98P ONLY)

H: TRAY PACKAGING(IN SPECIAL HORIZONTAL DIRECTION FOR 164P ONLY)

P: TRAY PACKAGING WITH INSERT CAP

△ S: TRAY PACKAGING WITH INSERT CAP(IN SPECIAL HORIZONTAL DIRECTION)

TAIL LENGTH OPTIONS

DIM "D"	PCB THICKNESS
3.85 +0.25 -0.13	1.56

LEAD FREE OPTIEON

"LF" FOR TERMINAL PLATING OPTION 0,1,2

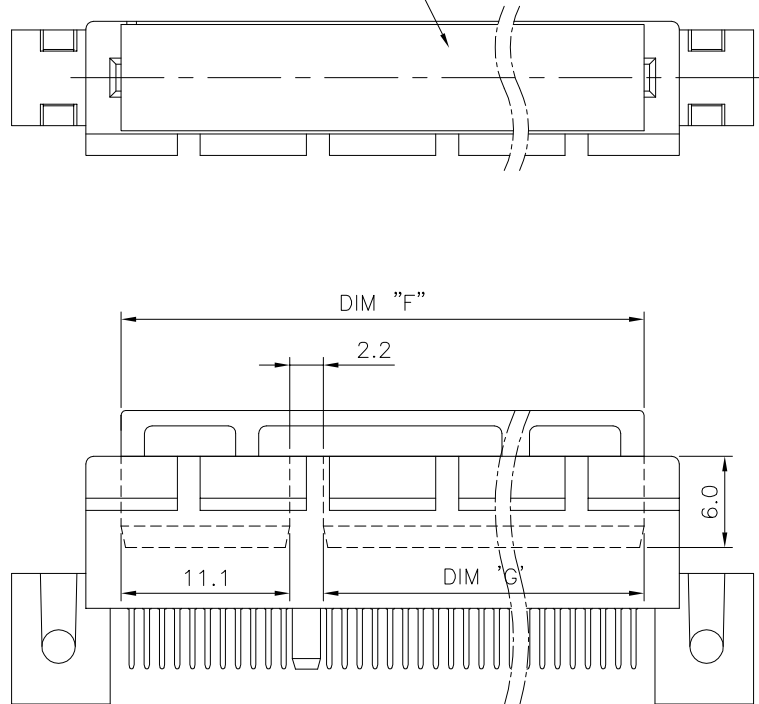
mat'l. code	surface	tolerance	projection	product family
-	-	ASME_Y14.5	⊕	PCI_EXPRESS
lfr	ecn no	dr	date	title
				PCI_EXPRESS_CARD_EDGE_GEN3
				STRADDLE_MOUNT_ASS'Y
				dwg no
				sheet 4 of 7
				size
				A4
				type
				CUSTOMER Drawing
sheet index	revision sheet	L	7	

NOTES:

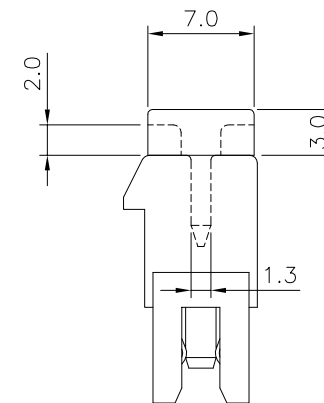
1. MATERIAL:



INSERT CAP: THERMOPLASTIC UL94V-0; BLACK COLOR.

INSERT CAP



DIMENSIONS		
POSITION	F	G
36	20.4	7.1
64	34.4	21.1
98	51.4	38.1
164	84.4	71.1



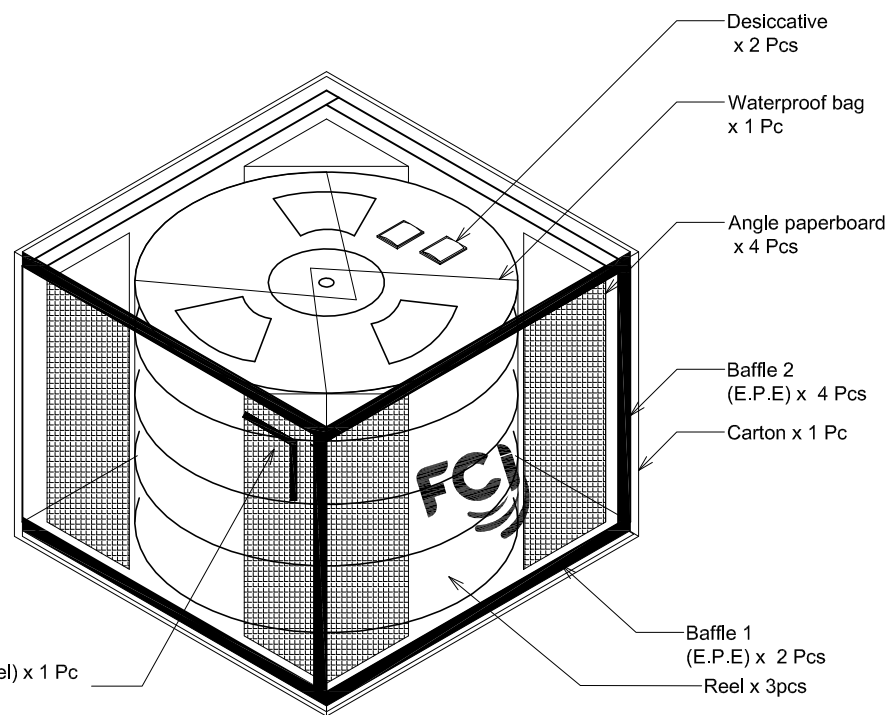
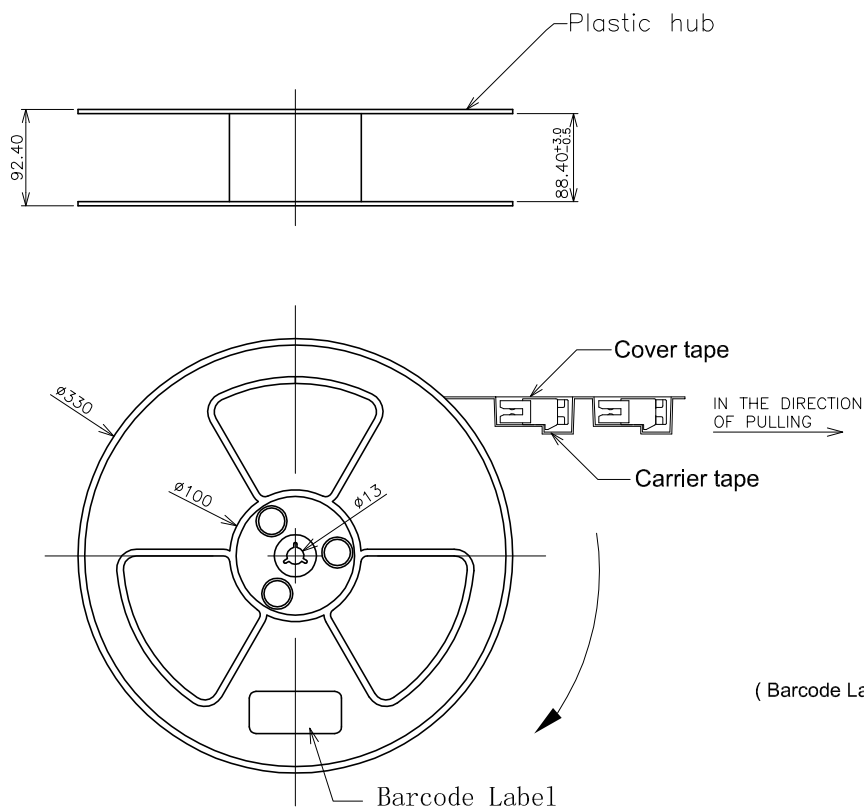
mat'l. code -					surface - ✓		tolerance ASME_Y14.5		projection 		product family PCI_EXPRESS						
ltr	ecn	no	dr	date	tolerances unless otherwise specified							title					
					angles linear	.0±.0.30							PCI_EXPRESS_CARD_EDGE_GEN3 STRADDLE_MOUNT_ASS'Y				
						.00±.0.20											
						±2' .000±.0.10											
					dr	ZHENHUA_LIU	2016-03-25				dwg no		sheet 5 of 7		size		
					engr	ZHENHUA_LIU	2016-03-25				10025026		A4				
					chr	STONE_LI	2016-03-25										
					appd	PM_ZHENG	2016-03-25				type CUSTOMER Drawing						
sheet index		revision sheet		L	7												

NOTE:

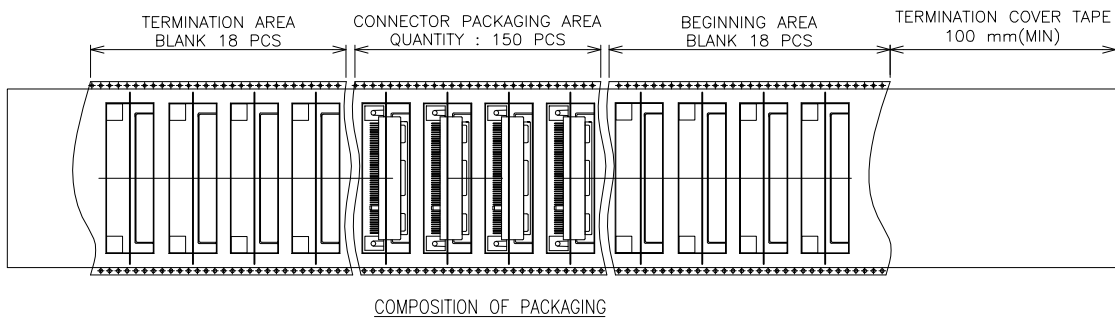
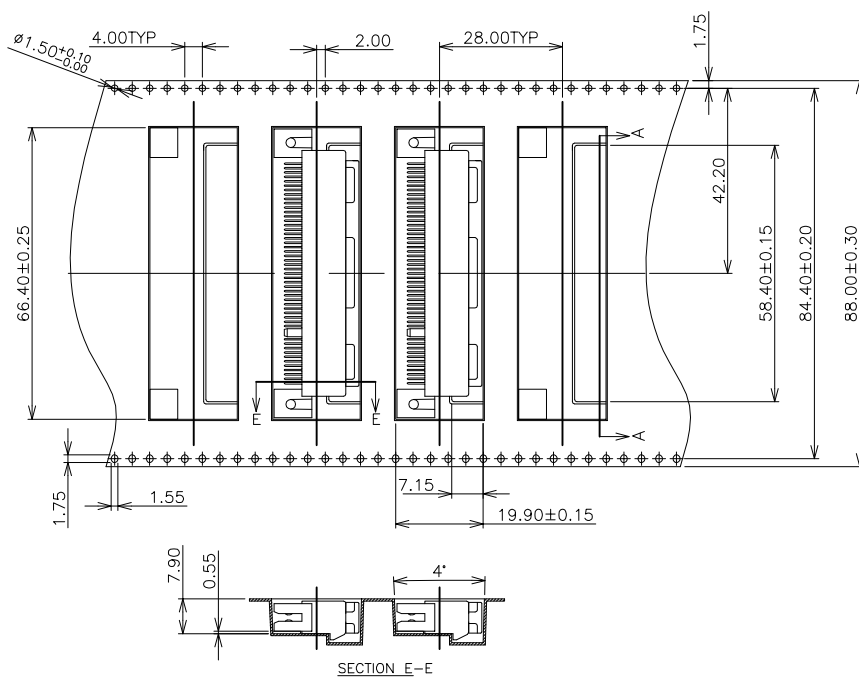
1. REEL MATERIAL : PS, BLACK
2. CARRIER MATERIAL : PS
3. COVER TAPE MATERIAL : PS
4. COVER TAPE REEL STRENGTH : 13"
5. QUANTITY : 150 PCS/REEL
6. Carton : 380(L) * 380(W) * 300(H) mm

Part No
10025026-XXXXC(LF)

NO. OF CONTACTS	98
REEL/CARTON	3
PCS/REEL	150
QUANTITY(PCS)	450



mat'l. code	-	surface	-	tolerance	ASME_Y14.5	projection	product family	PCI_EXPRESS
lfr	ecn no	dr	date	tolerances unless otherwise specified		MM	title	PCI_EXPRESS_CARD_EDGE_GEN3 STRADDLE_MOUNT_ASS'Y
				angles	linear	scale N/A	dwg no	10025026
				±2'	linear		sheet 6 of 7	A4
				dr	ZHENHUA_LIU	2016-03-25	Amphenol FCI	
				engr	ZHENHUA_LIU	2016-03-25		
				chr	STONE_LI	2016-03-25		
				appd	PM_ZHENG	2016-03-25		
sheet index	revision sheet	L	7				type	CUSTOMER Drawing



mat'l. code					surface		tolerance		projection		product family						
-					- ✓		ASME_Y14.5				PCI_EXPRESS						
ltr		ecn no		dr		date		tolerances unless otherwise specified					title				
								angles					PCI_EXPRESS_CARD_EDGE_GEN3				
								linear					STRADDLE_MOUNT_ASS'Y				
								±2'					MM				
								linear					scale N/A				
								dr					dwg no				
								ZHENHUA_LIU					sheet 7 of 7				
								2016-03-25					size				
								engr					10025026				
								ZHENHUA_LIU					A4				
								2016-03-25									
								chr									
								STONE_LI									
								2016-03-25									
								appd					type				
								PM_ZHENG					CUSTOMER Drawing				

Mouser Electronics

Authorized Distributor

Click to View Pricing, Inventory, Delivery & Lifecycle Information:

[FCI / Amphenol:](#)

[10025026-30202PLF](#)