

SIGN	DATE	DESCRIPTION	APPROVER
△	06/23'06	Voltage/Curren is changed from 250V/6A to 300V/10A	Marvin
△	06/23'06	Added cULus logo	Marvin
△	12/31'08	The temperature changed from -30°C,+105°C to -40°C,115°C	Jacke
△	12/31'08	Add the tolerance table	Jacke
THIS IS CAD DRAWING, DO NOT REVISE MANUALLY!!!			

Material

- Item a Clamp: Brass(CuZn) Ni plated
- Item b Terminal screw: Steel Zinc plating "-" slot type
- Item c Female contact :PhBz (CuSn)Tin plated
- Item d Terminal (housing): Thermoplastic (UL94V-0)

Electrical cULus

- △ Voltage rating: 300V
- Current rating: 10A
- Wire range:
- Solid wire(AWG): 16-28
- Stranded wire(AWG): 16-28
- Torque: 1.7Lb-In
- Screw: M2
- Wire strip length: 5-6mm
- Withstanding Voltage: 1.6KV
- △ Operating temperature: -40°C to +115°C
- △ Safety approval: cULus


TH xx 21x 0 xxxx G

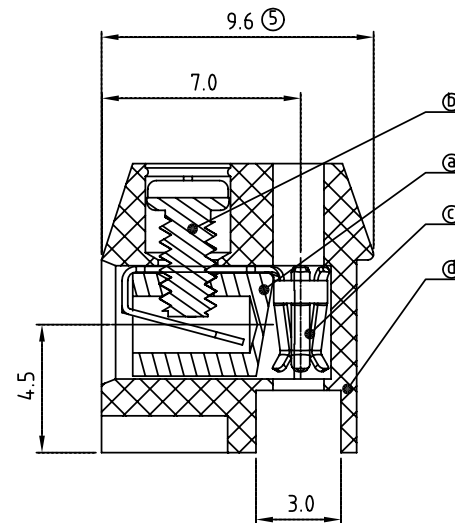
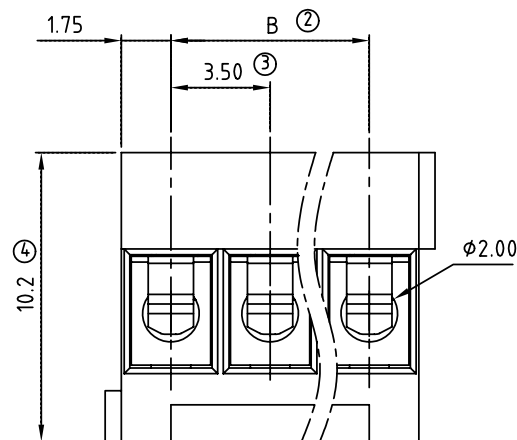
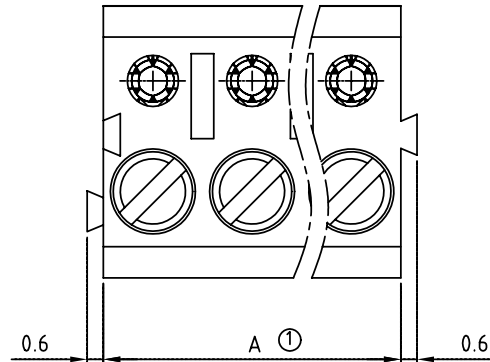
02	2 CONTACTS	0	Black (RAL9005)		
03	3 CONTACTS	2	Red (RAL3001/D)		Pb < 40,000ppm (RoHS)
...	...	3	Orange(RAL2011/P)		
24	24 CONTACTS	4	Yellow(RAL1018/A)	0000:"@Logo (Standard)	
		5	Green(RAL6018/T)	000A:"ANYTEK"Logo	
		6	Blue (RAL5015/A)	Any special item by	
		8	Grey(RAL7035/D)	customer request,	
				please contact sales	
				department.	

ANYTEK

CUSTOMER COPY

ALL RIGHTS RESERVED. REPRODUCTION OR ISSUE TO THIRD PARTIES IN ANY FORM WHATEVER IS NOT PERMITTED WITHOUT WRITTEN AUTHORITY FROM THE PROPRIETOR. PROPERTY OF ANYTEK TECHNOLOGY CO., LTD

TITLE	TH-3.5mm series “-” (Stackable Type)						
PART NO.	THxx21x0xxxxG			DWG NO.	8TH0201		
APPROVED	CHECKED	DESIGNED	DRAWN	CUST NO.	Tolerance		
		Jacke 2008.12.31	Jacke 2008.12.31		UNIT: mm		X. ±0.50
					SCALE: NONE		X.X ±0.30
					SHEET: 01/01		X.XX ±0.10
					REV.: F		X° ±1°



N = Number of poles
Dim A=Nx3.5
Dim B=(N-1)x3.5

	Dim A	Dim B
2-6p	±0.20	±0.15
7-12p	±0.25	±0.20
13-24p	±0.30	±0.25

Mouser Electronics

Authorized Distributor

Click to View Pricing, Inventory, Delivery & Lifecycle Information:

Amphenol:

<u>TH0721500000G</u>	<u>TH1821500000G</u>	<u>TH2121500000G</u>	<u>TH0421500000G</u>	<u>TH1721500000G</u>	<u>TH2321500000G</u>
<u>TH0221500000G</u>	<u>TH0621500000G</u>	<u>TH1121500000G</u>	<u>TH2021500000G</u>	<u>TH0721600000G</u>	<u>TH1221500000G</u>
<u>TH1221000000G</u>	<u>TH2421500000G</u>	<u>TH0521500000G</u>	<u>TH0921500000G</u>	<u>TH0221000000G</u>	<u>TH0321000000G</u>
<u>TH1421500000G</u>	<u>TH2221500000G</u>	<u>TH1021500000G</u>	<u>TH1521500000G</u>	<u>TH1321500000G</u>	<u>TH1621500000G</u>
<u>TH0321500000G</u>	<u>TH0821500000G</u>	<u>TH1921500000G</u>			