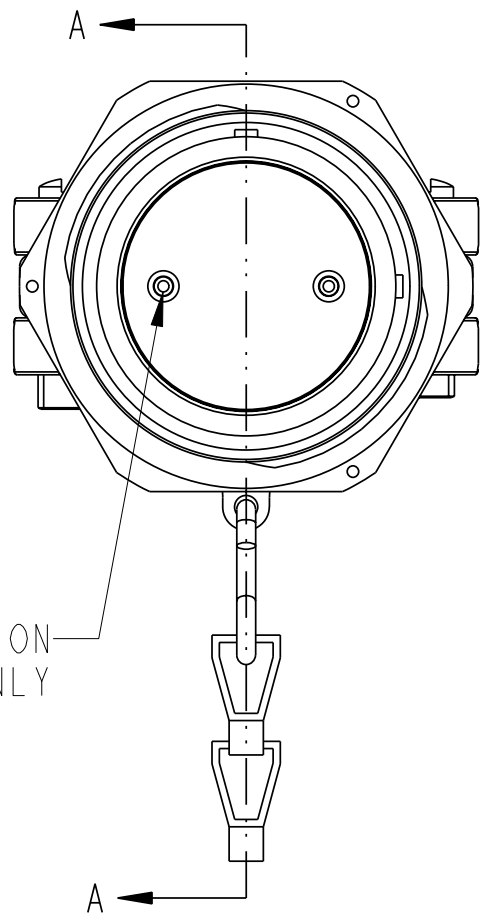
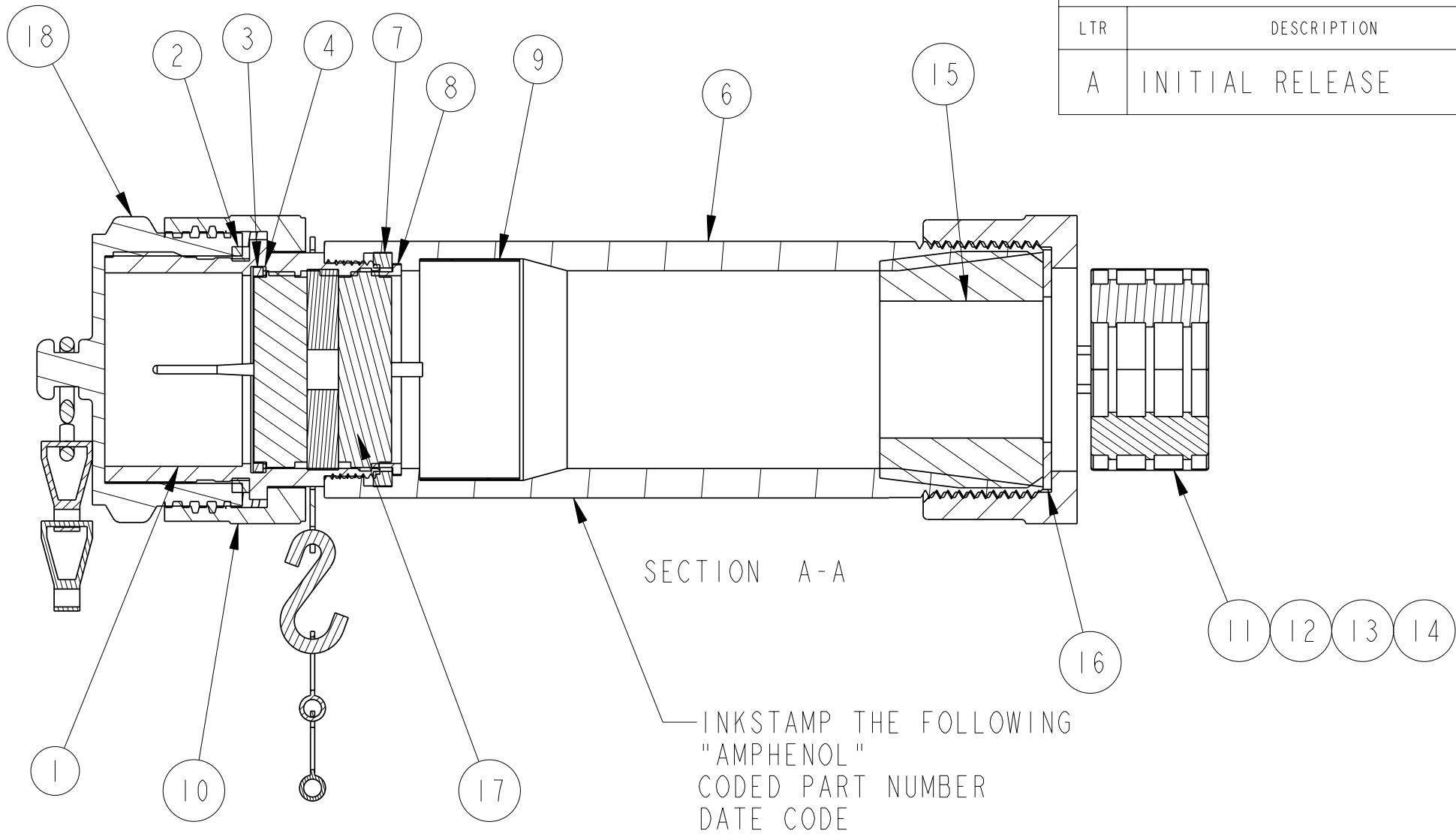


ZPEMLJ-()-()		
DOCUMENT NO.		
SHEET 1 OF 2		
REVISIONS		
LTR	DESCRIPTION	DATE
A	INITIAL RELEASE	4-11-06



TYPICAL INSERT CONFIGURATION
SHOWN FOR REFERENCE ONLY

COVER REMOVED FOR CLARITY



SECTION A-A

INKSTAMP THE FOLLOWING
"AMPHENOL"
CODED PART NUMBER
DATE CODE

ASSEMBLY CODE LOGIC

ZPEMLJ-XXXX-XXXXXX-XX

CONNECTOR
W/ MECHANICAL CLAMP
AND ENVIRONMENTAL COVER

- OPTIONAL INSERT ASSEMBLY KEYING
- CONTACT PLATING OPTION
- CONTACT WIRE RETENTION OPTION
- MALE GENDER
- CONTACT ARRANGEMENT
- SHELL SIZE
- GROMMET SIZE
- JACK NUT OPTION
- CABLE ADAPTER OPTION

1. BAG AND LABEL CONTACTS SEPARATELY. QUANTITIES SHOWN FOR REFERENCE ONLY.
2. ITEMS MAY NOT BE REQUIRED FOR ALL CONFIGURATIONS.
3. SEE SEPARATE PART LIST FOR COMPONENT PARTS AND QUANTITIES.
4. PACKAGE PER PROCESS SHEET. IDENTIFY PACKAGE WITH AMPHENOL ASSEMBLY NUMBER. ALL PARTS SHOWN ASSEMBLED FOR REFERENCE.

NOTES:

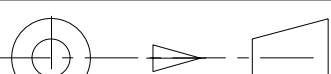
THE USE OF THIS DOCUMENT IS UNLIMITED.
HOWEVER, DOCUMENTS REFERENCED HEREON
MAY CONTAIN LIMITED RIGHTS DATA.

PRO/ENGINEER INFORMATION	
N/A	Pro/e Model Used:
N/A	ZPEMLJ-XXXX-XXXXX ASSEM
Drawing Name:	
ZPEMLJ-XXXX-XXXXXX-XX	

UNLESS OTHERWISE SPECIFIED
LINEAR DIMENSIONS ARE IN INCHES TOLERANCES: .XXXX = ±.0005 ANGLES = ±2° .XXX = ±.010 .XX = ±.03 .X = ±.1
DIM. & TOL. PER ASME Y14.5M; DRM PER MIL-DTL-31000; OTHER Amphenol Stds. PER 9-3800
LEGENDS: = FLAG NOTE CALL OUT REFERENCE ONLY

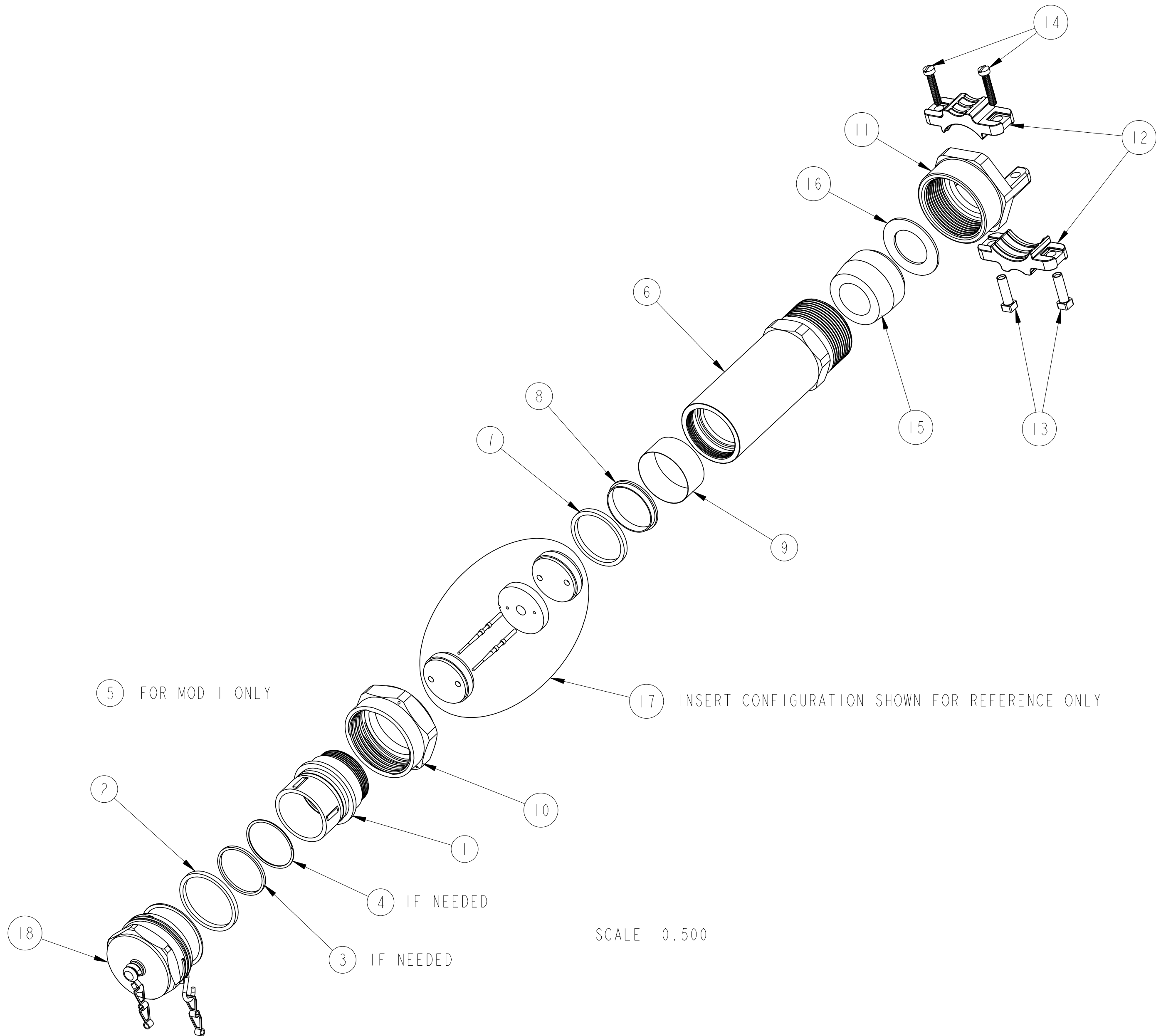
SPECIFICATIONS
MATERIAL SPEC.
PROCESS SPEC.
9-9380 9-3895 9-2811

POS	QTY	PART NUMBER	DESCRIPTION	NOTE
18	1	ZP-W-55()-A	ENVIRONMENTAL COVER ASSEMBLY	
17	1	SEE BOM	INSERT ASSEMBLY	3
16	1	ZP-80()-()	GLAND WASHER	2
15	1	ZP-63()-()	GROMMET	
14	2	50-50039-()	FILLISTER HEAD SCREW	
13	2	ZP-53()-12F	TUBULAR NUT	
12	2	ZP-53()-11A	CABLE CLAMP	
11	1	ZP-53()-10A	CABLE CLAMP NUT	
10	1	ZP-70()-30A	COUPLING NUT	
9	1	SEE BOM	INSULATION SLEEVE	
8	1	ZP-82()-E	ADAPTER WASHER	
7	1	ZP-61()-C	SEAL ADAPTER	
6	1	ZP-2()-10A	CABLE ADAPTER	
5	1	ZP-89()-10E	FRONT SPRING	2
4	1	ZP-89()-21E	SNAP RING	2
3	1	ZP-66()-12CB	INNER SEAL	2
2	1	ZP-60()-C	BARREL SEAL	
1	1	ZP-10()-()A	PLUG SHELL	

PARTS LIST			
APPROVALS		DATE	
PREPARED BY H. BROOKER		11-Apr-06	
ENGINEER IN CHARGE A. POLISHAK			
DESIGN MANAGER D. GALLUSSER			
DESIGN ACTIVITY GROUP C & I			
THIRD ANGLE PROJECTION		U	
		AMPHENOL CORPORATION 40-60 DELAWARE AVENUE SIDNEY, N.Y. 13838	
STARLINE PLUG ASSEMBLY W/ INSERTS			
SIZE C	CAGE CODE 77820	DOCUMENT NO. ZPEMLJ-()-()	REV. A
SCALE: 1.0		REF: ZPEMLJ-XX-XXX	SHEET 1 OF 2

THE USE OF THIS DOCUMENT IS UNLIMITED.
HOWEVER, DOCUMENTS REFERENCED HEREON
MAY CONTAIN LIMITED RIGHTS DATA.

RELEASED / Apr . 19 2006, 11:52 AM



Mouser Electronics

Authorized Distributor

Click to View Pricing, Inventory, Delivery & Lifecycle Information:

[Amphenol:](#)

[ZPEMLJ-1820-313SN](#)