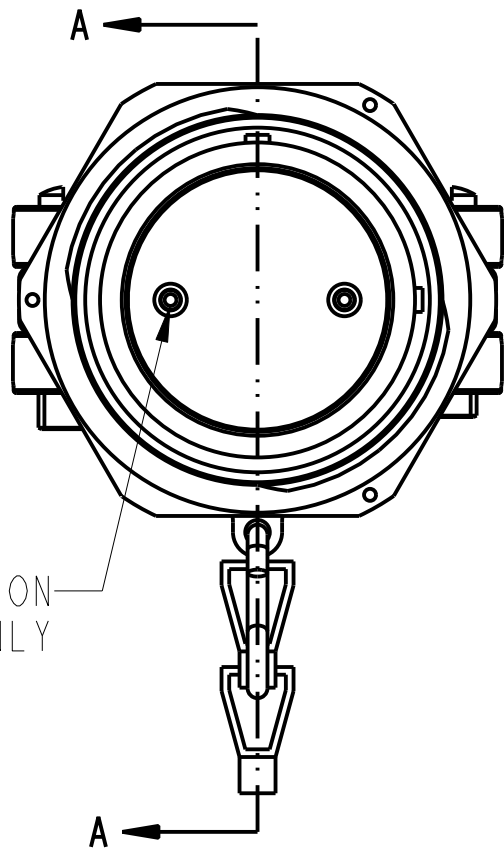
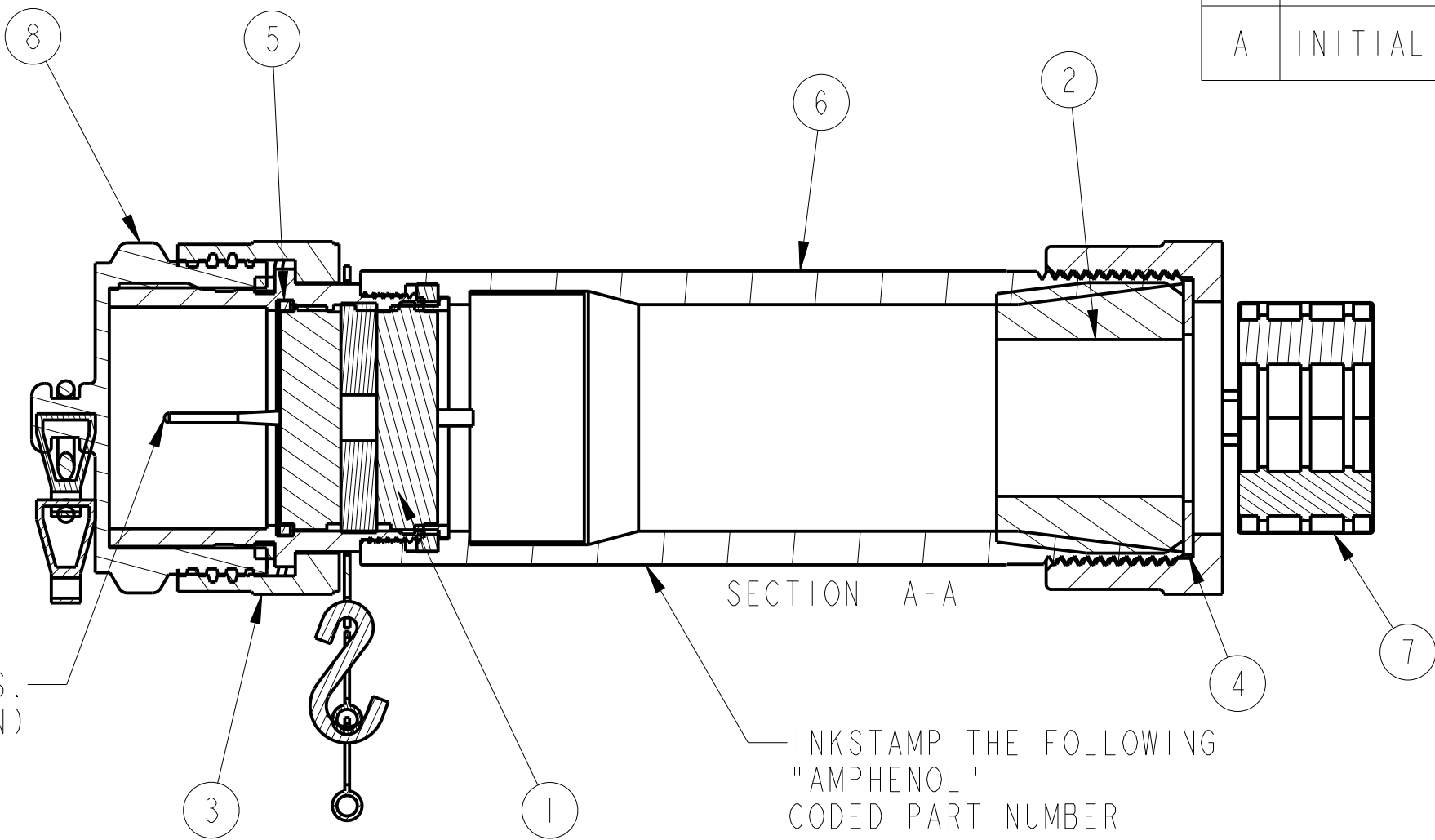


ZPEML-(-)(-)		DOCUMENT NO.
REV. A	SHEET 1 OF 2	
REVISIONS		
LTR	DESCRIPTION	DATE
A	INITIAL RELEASE	01-08-09



TYPICAL INSERT CONFIGURATION  
SHOWN FOR REFERENCE ONLY

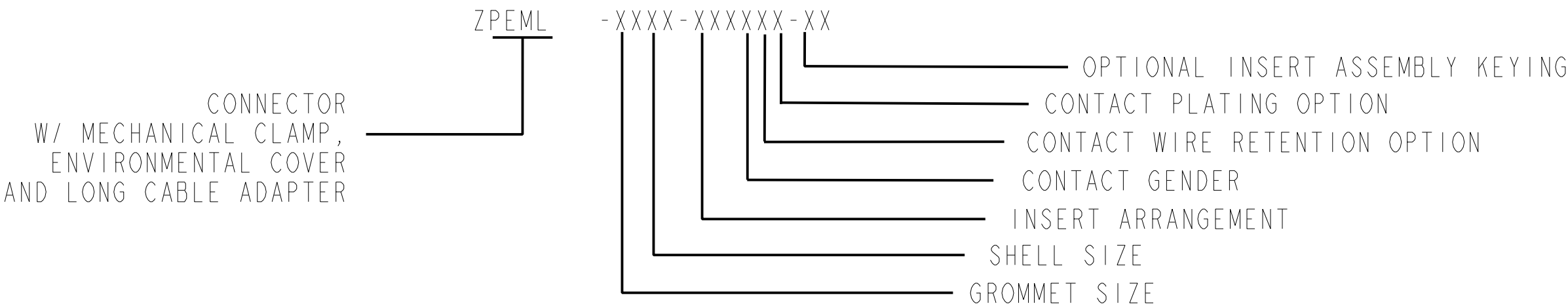


PIN OR SOCKET CONTACTS.  
(PIN SHOWN)

INKSTAMP THE FOLLOWING  
"AMPHENOL"  
CODED PART NUMBER  
DATE CODE

COVER REMOVED FOR CLARITY

ASSEMBLY CODE LOGIC



4. PACKAGE PER PROCESS SHEET. IDENTIFY PACKAGE WITH AMPHENOL ASSEMBLY NUMBER. ALL PARTS SHOWN ASSEMBLED FOR REFERENCE.
3. SEE SEPARATE PART LIST FOR COMPONENT PARTS AND QUANTITIES.
2. ITEMS MAY NOT BE REQUIRED FOR ALL CONFIGURATIONS.
1. BAG AND LABEL CONTACTS SEPARATELY. QUANTITIES SHOWN FOR REFERENCE ONLY.

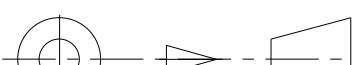
NOTES:

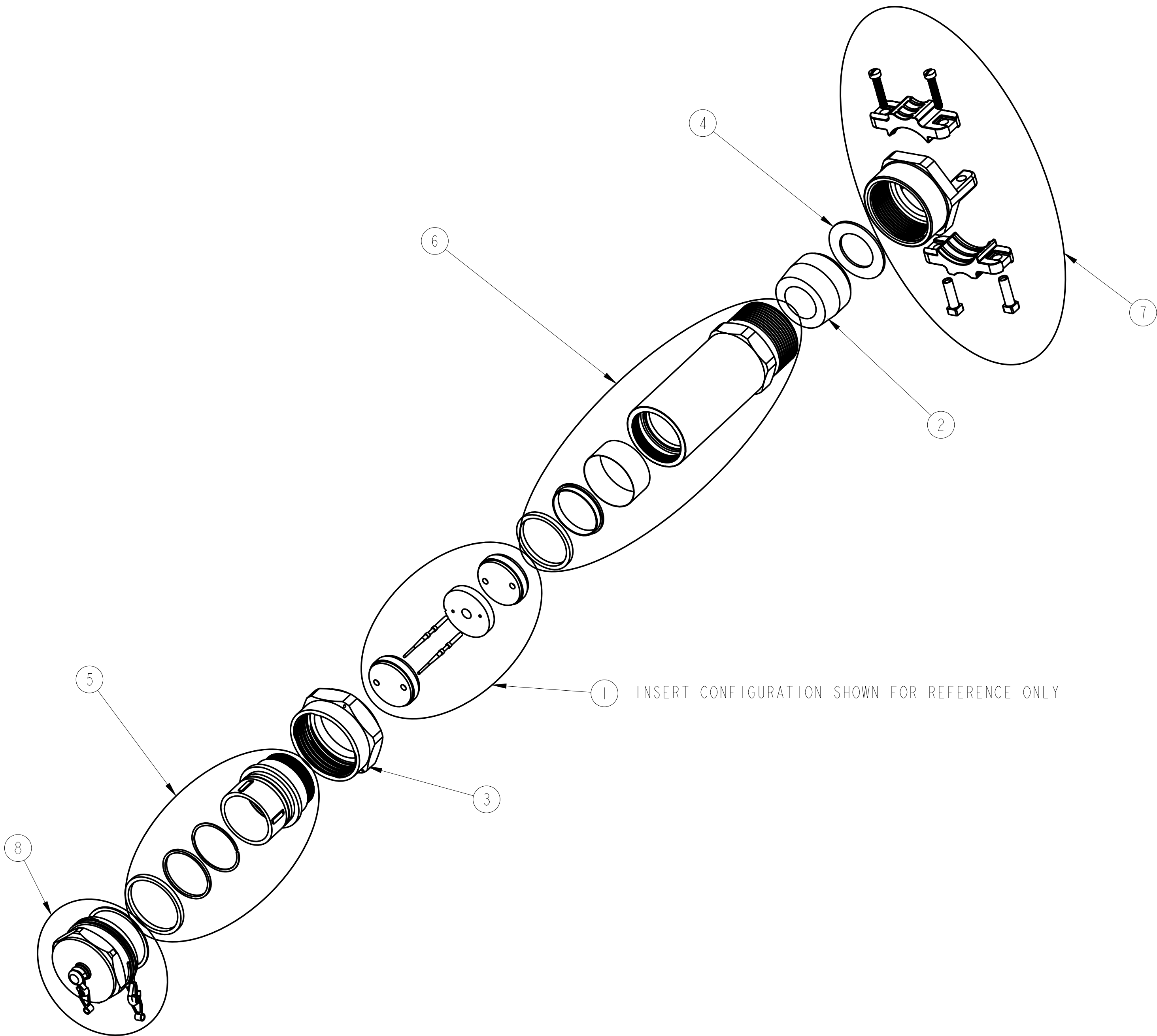
THE USE OF THIS DOCUMENT IS UNLIMITED. HOWEVER, DOCUMENTS REFERENCED HEREON MAY CONTAIN LIMITED RIGHTS DATA.

PRO/ENGINEER INFORMATION	
N/A	Pro/e Model Used:
N/A	ZPEMLJ-XXXX-XXXXX.ASSEM
Drawing Name:	
ZPEML	
NEXT ASSEMBLY	

UNLESS OTHERWISE SPECIFIED	SPECIFICATIONS
LINEAR DIMENSIONS ARE IN INCHES TOLERANCES: .XXXX = ±.0005 ANGLES= ±2° .XXX = ±.010 .XX = ±.03 .X = ±.1  DIM.& TOL. PER ASME Y14.5M; DRM PER MIL-DTL-31000; OTHER Amphenol Sds. PER 9-3800  LEGENDS: =FLAG NOTE CALL OUT REFERENCE ONLY	MATERIAL SPEC.
	PROCESS SPEC.
	9-9380 9-3895 9-2811

POS	QTY	PART NUMBER	DESCRIPTION	NOTE
8	1	ZP-W-55(-)-A	COVER ASSY	
7	1	ZP-W-53(-)	CABLE CLAMP S/A	
6	1	ZP-W-24(-)	ADAPTER S/A	
5	1	ZP-W-13(-)	BARREL ASSY	
4	1	ZP-80(-)-(-)E	GLAND WASHER	
3	1	ZP-70(-)-10A	NUT, COUPLING	
2	1	ZP-63(-)-(-)C	GROMMET	
1	1	ZP-(-)-(-)	INSR SUB-ASSY	

PARTS LIST						
APPROVALS		DATE	AMPHENOL CORPORATION 40-60 DELAWARE AVENUE SIDNEY, N.Y. 13838			
PREPARED BY F. GARCIA		08-Jan-09				
ENGINEER IN CHARGE R. ARCYKIEWICZ						
DESIGN MANAGER R. BARNES						
DESIGN ACTIVITY GROUP C & I			STARLINE PLUG ASSEMBLY W/ INSERTS			
THIRD ANGLE PROJECTION			SIZE C	CAGE CODE 77820	DOCUMENT NO. ZPEML-(-)(-)	REV. A
			SCALE: 1.0 REF:		SHEET 1 OF 2	



THE USE OF THIS DOCUMENT IS UNLIMITED.  
HOWEVER, DOCUMENTS REFERENCED HEREON  
MAY CONTAIN LIMITED RIGHTS DATA.

# Mouser Electronics

Authorized Distributor

Click to View Pricing, Inventory, Delivery & Lifecycle Information:

[Amphenol:](#)

[ZPEML-28C24-38S](#)