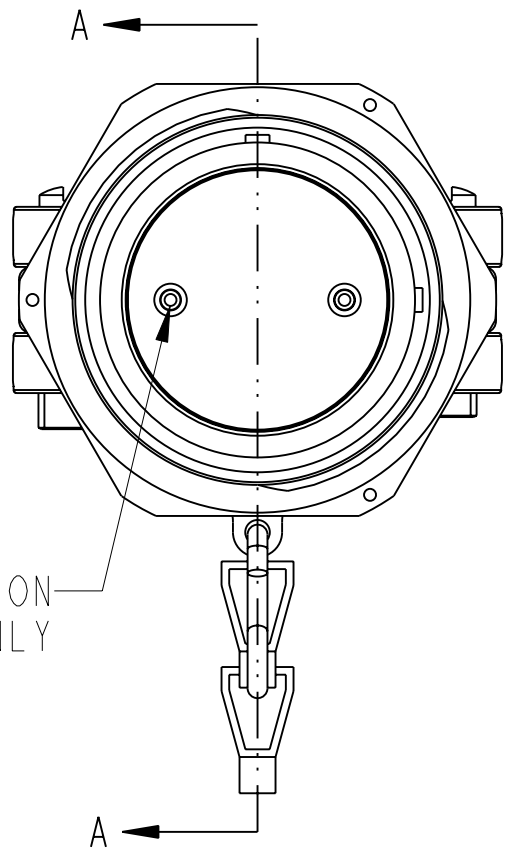
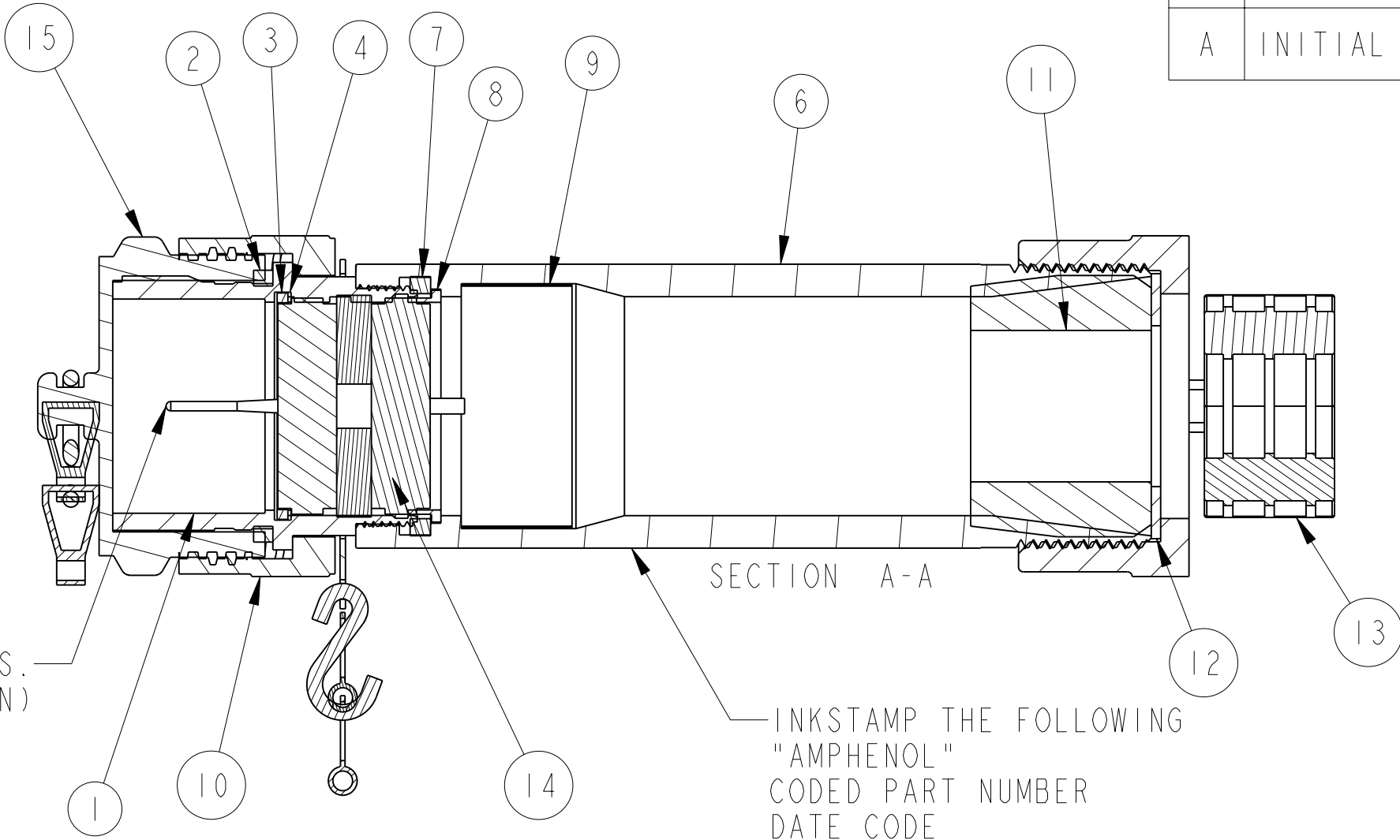


ZPEM-()-()		DOCUMENT NO.
REV.	SHEET 1 OF 2	A
REVISIONS		
LTR	DESCRIPTION	DATE
A	INITIAL RELEASE	10-31-06

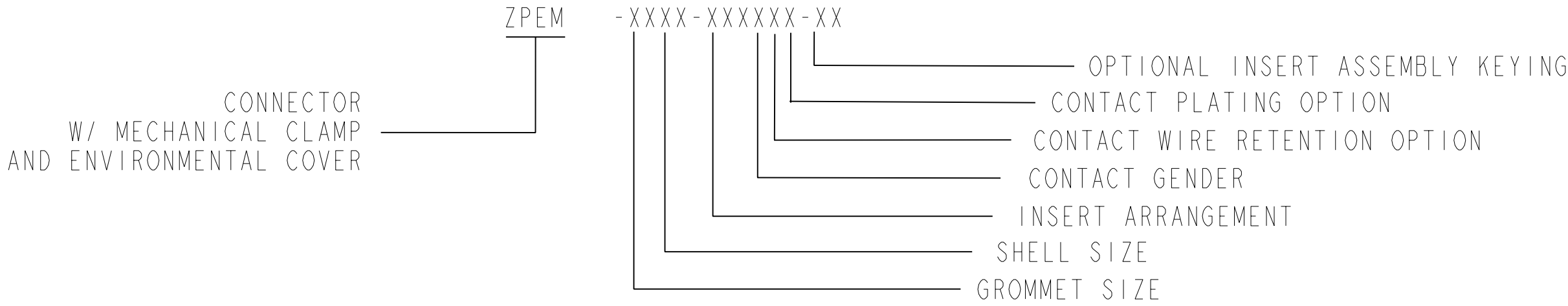


TYPICAL INSERT CONFIGURATION
SHOWN FOR REFERENCE ONLY



COVER REMOVED FOR CLARITY

ASSEMBLY CODE LOGIC



1. BAG AND LABEL CONTACTS SEPARATELY. QUANTITIES SHOWN FOR REFERENCE ONLY.
2. ITEMS MAY NOT BE REQUIRED FOR ALL CONFIGURATIONS.
3. SEE SEPARATE PART LIST FOR COMPONENT PARTS AND QUANTITIES.
4. PACKAGE PER PROCESS SHEET. IDENTIFY PACKAGE WITH AMPHENOL ASSEMBLY NUMBER. ALL PARTS SHOWN ASSEMBLED FOR REFERENCE.

NOTES:

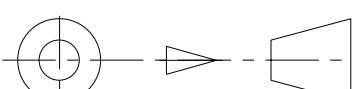
THE USE OF THIS DOCUMENT IS UNLIMITED. HOWEVER, DOCUMENTS REFERENCED HEREON MAY CONTAIN LIMITED RIGHTS DATA.

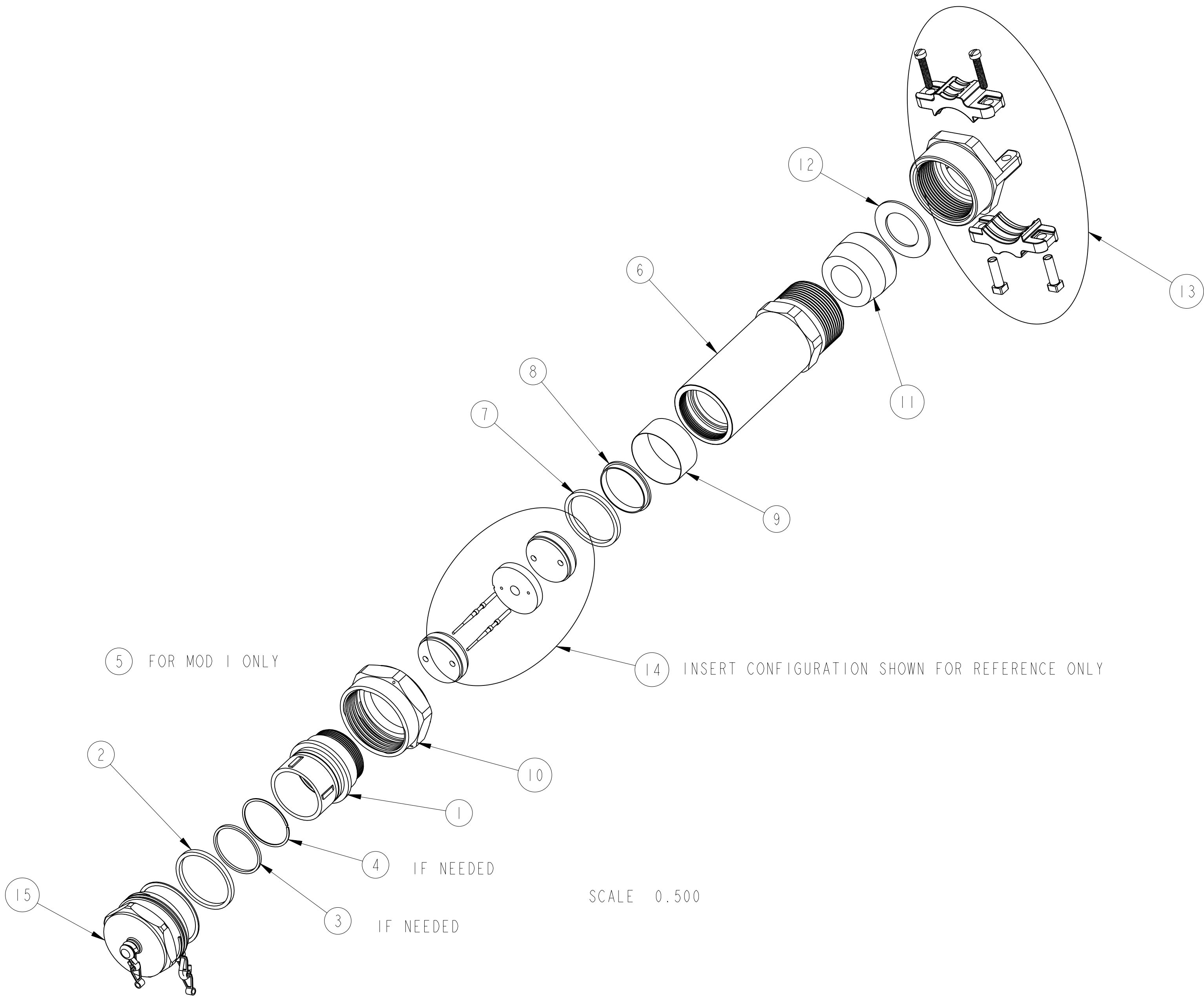
RELEASED / Nov . 13 2006, 01:41 PM

N/A	PRO/ENGINEER INFORMATION
N/A	Pro/e Model Used:
	ZPEMJ-XXXX-XXXXX.ASSEM
	Drawing Name:
	ZPEM

UNLESS OTHERWISE SPECIFIED	SPECIFICATIONS
LINEAR DIMENSIONS ARE IN INCHES TOLERANCES: .XXXX = ±.0005 ANGLES= ±2° .XXX = ±.010 .XX = ±.03 .X = ±.1 DIM.& TOL. PER ASME Y14.5M; DRM PER MIL-DTL-31000; OTHER Amphenol Sds. PER 9-3800 LEGENDS: =FLAG NOTE CALL OUT REFERENCE ONLY	MATERIAL SPEC.
	PROCESS SPEC.
	9-9380 9-3895 9-2811

POS	QTY	PART NUMBER	DESCRIPTION	NOTE
15	1	ZP-W-55()-A	ENVIRONMENTAL COVER ASSEMBLY	
14	1	SEE BOM	INSERT ASSEMBLY	3
13		ZP-W-53()	ASSY, MECH CLAMP	
12	1	ZP-80()-()	GLAND WASHER	2
11	1	ZP-63()-()	GROMMET	
10	1	ZP-70()-10A	COUPLING NUT (STD LENGTH)	
9	1	SEE BOM	INSULATION SLEEVE	
8	1	ZP-82()-E	ADAPTER WASHER	
7	1	ZP-61()-C	SEAL ADAPTER	
6	1	ZP-2()-10A	CABLE ADAPTER	
5	1	ZP-89()-10E	FRONT SPRING	2
4	1	ZP-89()-21E	SNAP RING	2
3	1	ZP-66()-12CB	INNER SEAL	2
2	1	ZP-60()-C	BARREL SEAL	
1	1	ZP-10()-()A	PLUG SHELL	

PARTS LIST						
APPROVALS		DATE	AMPHENOL CORPORATION 40-60 DELAWARE AVENUE SIDNEY, N.Y. 13838			
PREPARED BY R. ARCYKIEWICZ		11-Apr-06				
ENGINEER IN CHARGE A. POLISHAK						
DESIGN MANAGER D. GALLUSSER						
DESIGN ACTIVITY GROUP C & I		STARLINE PLUG ASSEMBLY W/ INSERTS				
THIRD ANGLE PROJECTION			SIZE C	CAGE CODE 77820	DOCUMENT NO. ZPEM-()-()	REV. A
			SCALE: 1.0 REF:			SHEET 1 OF 2



THE USE OF THIS DOCUMENT IS UNLIMITED.
HOWEVER, DOCUMENTS REFERENCED HEREON
MAY CONTAIN LIMITED RIGHTS DATA.

RELEASED / Nov . 13 2006, 01:41 PM

SIZE	CAGE CODE	DOCUMENT NO.	REV.
C	77820	ZPEM-()-()	A
SCALE: 1.0		REF:	SHEET 2 OF 2

Mouser Electronics

Authorized Distributor

Click to View Pricing, Inventory, Delivery & Lifecycle Information:

[Amphenol:](#)

[ZPEM-0812-310PN](#)