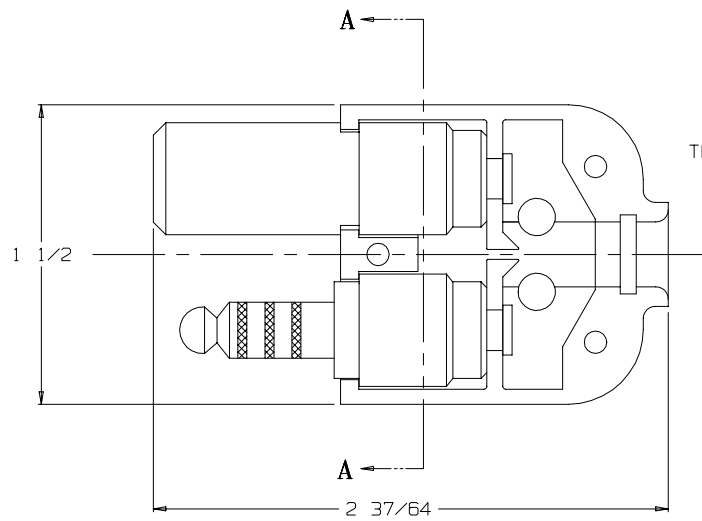
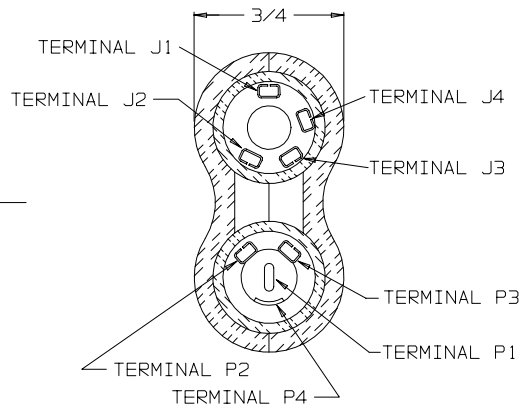


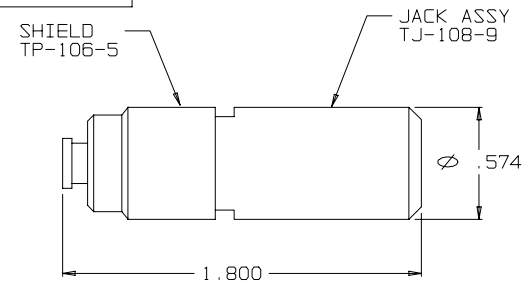
# C TP-108



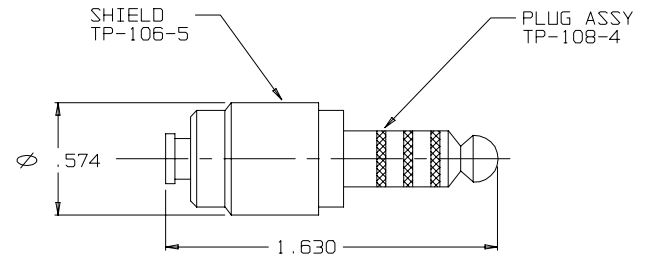
VIEW WITH HALF SHELL REMOVED



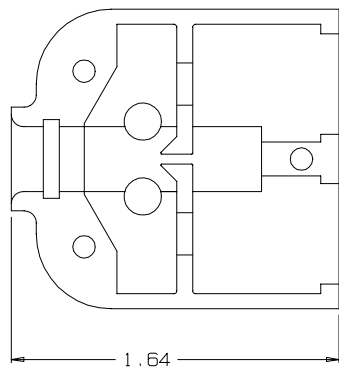
SECTION A-A



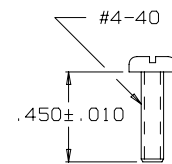
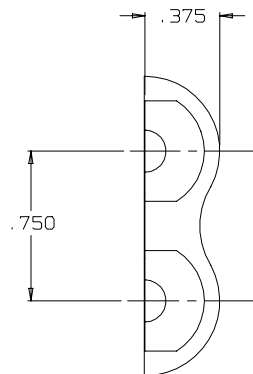
TJ-108-10 JACK & SHIELD ASSEMBLY



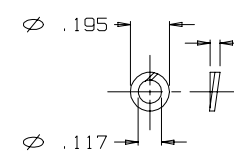
TP-108-6 PLUG & SHIELD ASSEMBLY



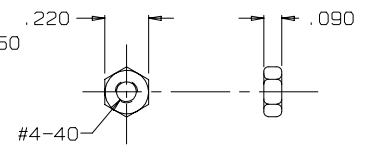
SHELL, HALF  
TP-108-2  
(2 REQ'D)



SCREW  
TJ-106-12  
(3 REQ'D)

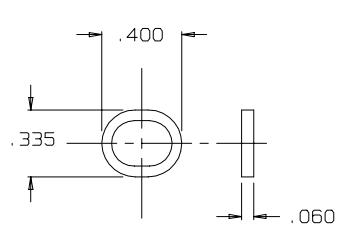


WASHER  
TJ-106-13  
(3 REQ'D)

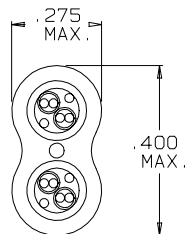


NUT  
TJ-106-14  
(3 REQ'D)

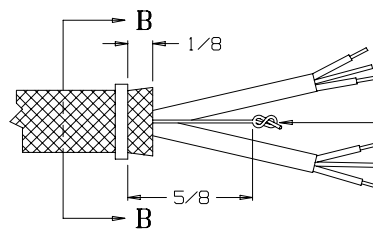
- F1** NOTES:  
1) ALL NICKEL PLATING SHALL BE OF SUFFICIENT THICKNESS TO PROVIDE CORROSION PROTECTION.  
(REF QQ-N-290-A, CLASS 1)  
2) WIRING CALL OUTS ARE FOR REF ONLY



RING, STRAIN RELIEF  
TJ-106-10A  
(1 REQ'D)



SECTION B-B  
STRAIN RELIEF  
CLAMP TJ-106-10A  
AFTER CRIMPING  
SCALE: 4:1



STAY CORD-VARNISH KNOT

THIS DOCUMENT CONTAINS PROPRIETARY INFORMATION OF NEXUS, INCORPORATED AND SUCH INFORMATION MAY NOT BE DISCLOSED TO OTHERS FOR ANY PURPOSE OR USED FOR ANY PURPOSE WITHOUT THE WRITTEN CONSENT OF NEXUS.

C	REVISION	CN #	DATE	CHK.
C	REDRAWN ON CAD CORRECTED ERRORS	476	2/24/04	EWT
B	.305 WAS .400	283	12/4/97	
A	CORRECTED TO OF P3, P4 & P3, P4	197	10/11/95	LS
LET.	REVISION	CN #	DATE	CHK.

DWN. BY	IDH	DATE	MATERIAL	SEE FIELD OF DRAWING
CHECKED BY	L SMITH	DATE	FINISH	N/A
APPR. BY		DATE	WEIGHT	SCALE 2:1
UNLESS OTHERWISE SPECIFIED DIMENSIONS ARE IN INCHES			TITLE	
FRACTIONS DECIMALS ANGLES			TP-108 PLUG-TELEPHONE-BIAXIAL SHIELDED (8) CONDUCTOR	
DO NOT SCALE DWG.			SHEET 1 OF 1	

**NEXUS**  
STAMFORD, CONN  
SIZE DWG. NO.  
**C TP-108**

# Mouser Electronics

Authorized Distributor

Click to View Pricing, Inventory, Delivery & Lifecycle Information:

[Amphenol:](#)

[TP-108](#) [TP-108HC](#)