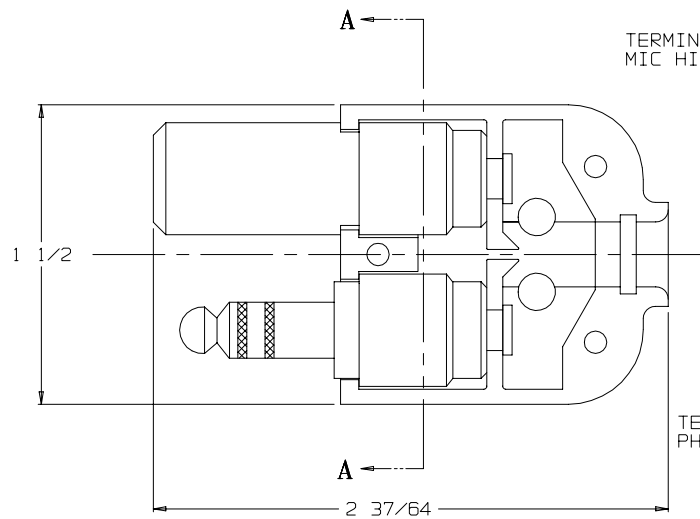
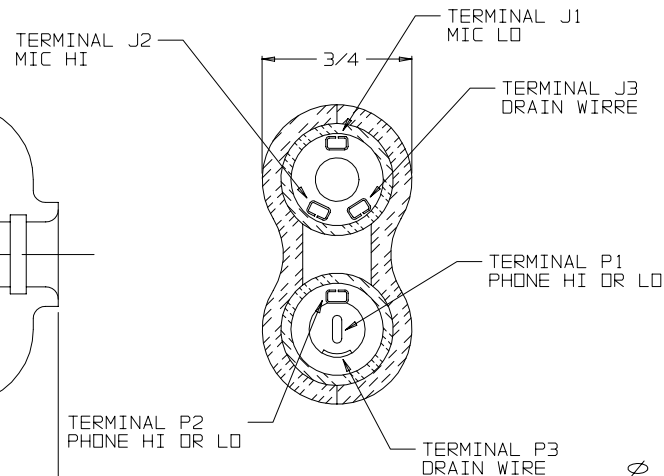


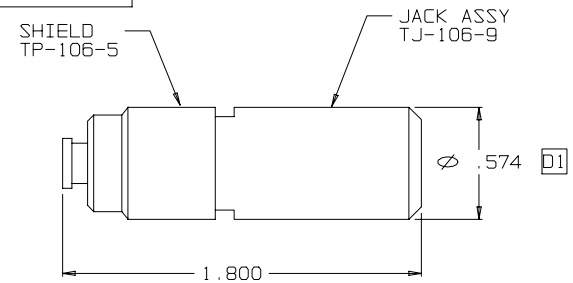
C TP-106



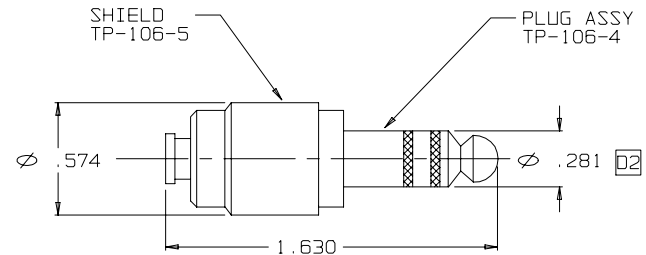
VIEW WITH HALF SHELL REMOVED



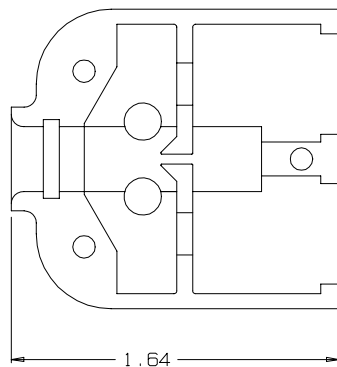
SECTION A-A
SEE NOTE 2



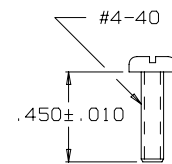
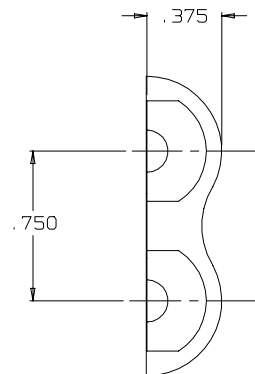
TJ-106-21 JACK & SHIELD ASSEMBLY



TP-106-10 PLUG & SHIELD ASSEMBLY



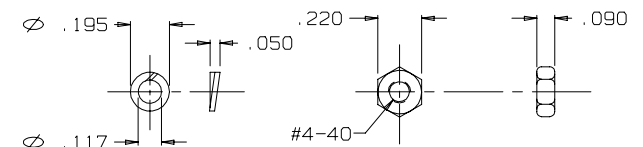
SHELL, HALF
TP-106-6
(2 REQ'D)



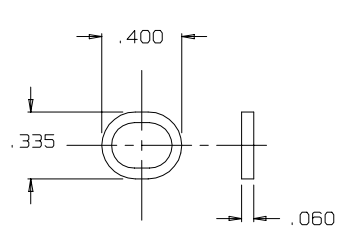
SCREW
TJ-106-12
(3 REQ'D)

WASHER
TJ-106-13
(3 REQ'D)

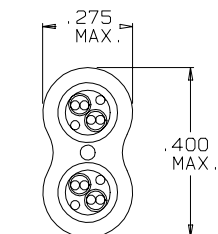
NUT
TJ-106-14
(3 REQ'D)



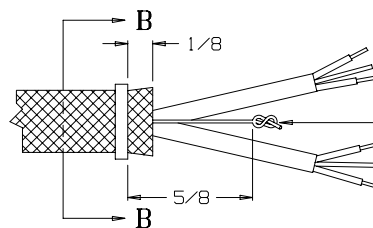
- NOTES:**
- 1) ALL NICKEL PLATING SHALL BE OF SUFFICIENT THICKNESS TO PROVIDE CORROSION PROTECTION. (REF QQ-N-290-A, CLASS 1)
 - 2) WIRING CALL OUTS ARE FOR REF ONLY



RING, STRAIN RELIEF
TJ-106-10A
(1 REQ'D)



SECTION B-B
STRAIN RELIEF
CLAMP TJ-106-10A
AFTER CRIMPING
SCALE: 4:1



STAY CORD-VARNISH KNOT

THIS DOCUMENT CONTAINS PROPRIETARY INFORMATION OF NEXUS, INCORPORATED AND SUCH INFORMATION MAY NOT BE DISCLOSED TO OTHERS FOR ANY PURPOSE OR USED FOR ANY PURPOSE WITHOUT THE WRITTEN CONSENT OF NEXUS.

F	2) ADDED P/N'S	240	8/13/96	LS	DWN. BY	EC	DATE	4/5/93	MATERIAL	SEE FIELD OF DRAWING
E	TJ-106-13 WAS	016	6/27/96	JRJ	CHECKED BY	RVC	DATE	6/5/96	FINISH	N/A
D	2) .564 WAS .574		4/17/96	RDJ	APPR. BY	L SMITH	DATE	9/13/96	WEIGHT	SCALE 2:1
C	WASHER P/N WAS		4/8/96	RDJ					TITLE	TP-106
B	ADDED SECTION B-B		6/5/96	RDJ						PLUG-TELEPHONE-BIAXIAL
A	REDRAWN WAS D SIZE		3/7/96	RDJ						SHIELDED (6) CONDUCTOR
LET.	REVISION	CN #	DATE	CHK.	±/± 1/64	±/± .005	—		DO NOT SCALE DWG.	SHEET 1 OF 1

NEXUS
STAMFORD, CONN

SIZE DWG. NO.
C TP-106

Mouser Electronics

Authorized Distributor

Click to View Pricing, Inventory, Delivery & Lifecycle Information:

[Amphenol:](#)

[TJS-106](#) [TP-106](#) [TP-106S](#)