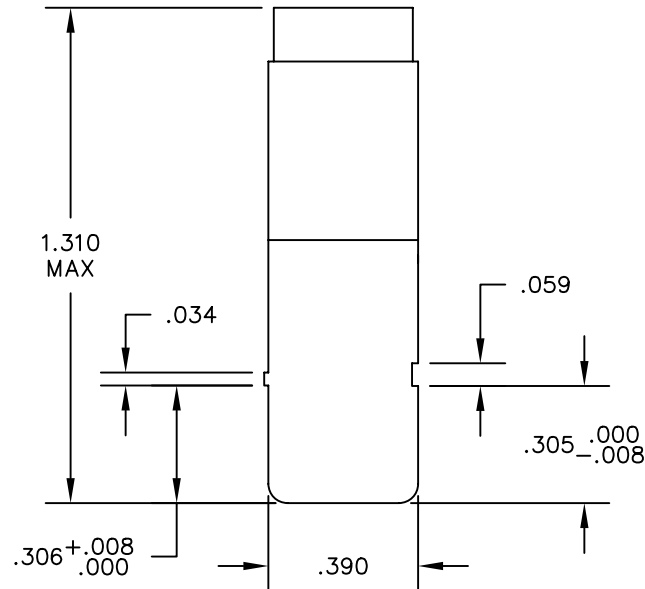
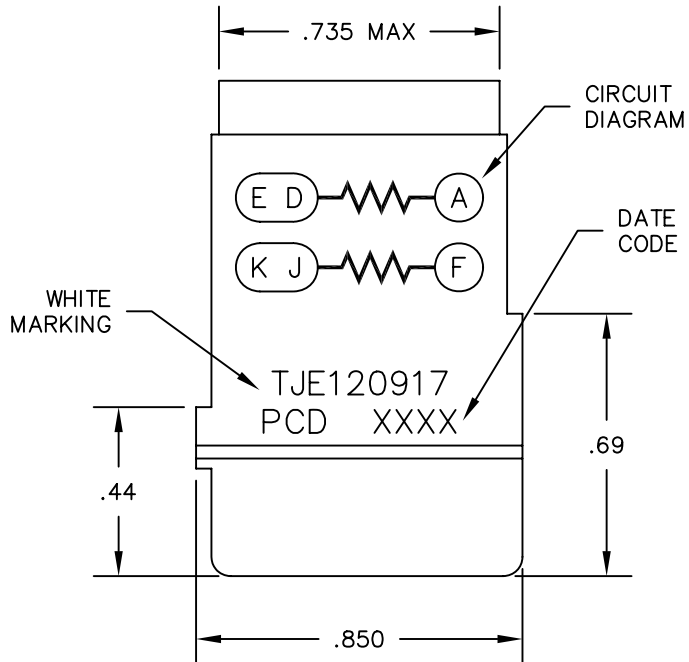
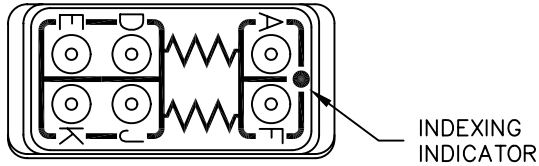


REV	ECN	APP'D
A	5790	JT 1/27/06



NOTES:

1. MATERIALS:
HOUSING - POLYETHERIMIDE, COLOR: BLACK.
GROMMET - SILICONE ELASTOMER, COLOR: BLUE
RESISTOR A - $10K\Omega \pm 1\%$, 1/2 W, RLR20C1002FS
RESISTOR F - $240K\Omega \pm 2\%$, 1/2 W, RLR20C2403GS
2. MODULE SUPPLIED WITH 7 PIN CONTACTS, M39029/1-101 AND 2 SEALING PLUGS, MS24788-20.

DIMENSIONS ANSI Y14.5M UNITS: INCHES ACAD FILE	TOLERANCES .XX ±.01 .XXX ±.005 ANGLES ±2°	PROJECTION 	SPECIFICATION DRAWING			TITLE ELECTRONIC MODULE RESISTOR, 10KΩ + 240KΩ 1/2W		
			ENGR D. LANG 03/29/05					
			CHKD					
ORIGINAL	THIS DOCUMENT CONTAINS PROPRIETARY INFORMATION WHICH IS THE CONFIDENTIAL PROPERTY OF PCD, INC. PEABODY, MA, USA		APPD		SIZE A	DWG NO. TJE120917		REV A
					CODE: 58982	SCALE: 2X	SHEET 1 OF 1	

Mouser Electronics

Authorized Distributor

Click to View Pricing, Inventory, Delivery & Lifecycle Information:

[Amphenol:](#)

[TJE120917](#)