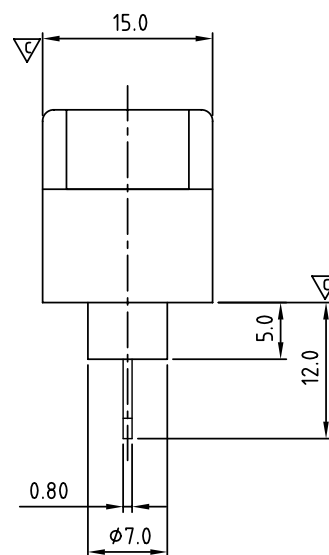
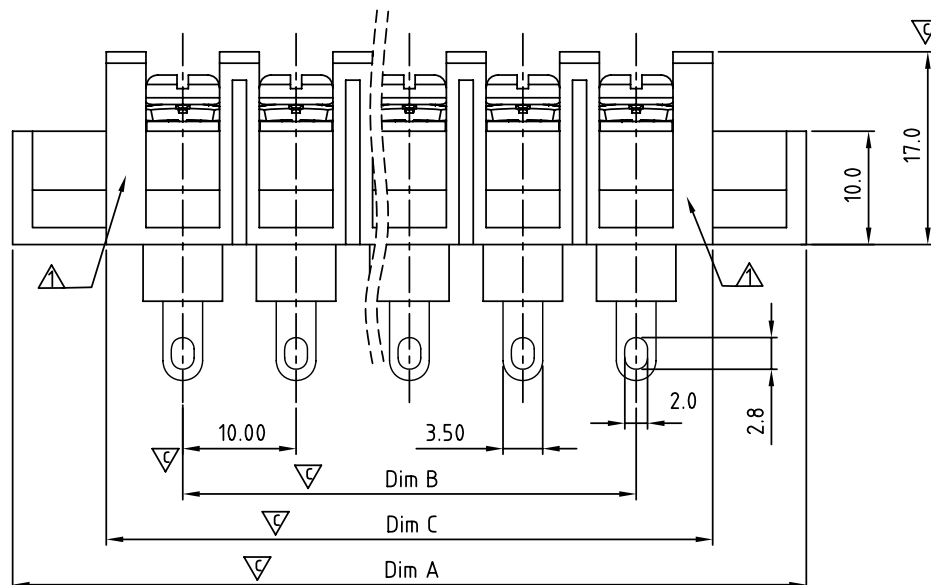


N=Number of poles

Dimension A&B

Dim A	(N+2)×10.0
Dim B	(N-1)×10.0
Dim C	N×10.0+3.5

Poles	Tolerance
4p-10p	±0.40
11p-20p	±0.60
21p-30p	±0.80



SIGN	DATE	DESCRIPTION	APPROVER
△	3/30'09	Structure changed	JODY
△	3/30'09	Temperature changed from -40~105°C to -40~115°C	JODY
△	11/17'12	Change the screw plating specification	Jacky
△	11/17'12	Change the dimensional tolerance	Jacky
THIS IS CAD DRAWING, DO NOT REVISE MANUALLY!!!			

# MATERIALS ELECTRICAL

RATED VOLTAGE & CURRENT:

300 V, 20 A

WITHSTAND VOLTAGE:

AC 2000 V/Min

INSULATION RESISTANCE:

1000 MΩ OR MORE AT DC 500 V

OPERATING TEMPERATURE RANG:

△ -40 °C ~+115 °C

SCREW TORQUE VALUE:

12 Lb-In.

WIRE RANGE:

22 - 12 AWG

1) MOLDED PARTS:

POLYIMIDE 66, UL 94 V-0 BLACK

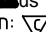
2) TERMINAL:

BRASS, 0.8t, Tin PLATED

△ 3) TERMINAL SCREWS:

STEEL, M3.5

APPROVAL: 

Critical dimension: 

PART NO.:

YK 606 xx 3 x x 00G

NO. OF POLES

04: 4 POLES

05: 5 POLES

06: 6 POLES

...

30: 30 POLES

G:RoHS compliant(lead<4%)  
in copper alloy

MARK

0: "@" MARK

1: "ANY" MARK

TERMINAL & SCREW PLATED

0: TERMINAL & SCREW: G/F

△ 1: TERMINAL: G/F, SCREW: Zinc

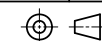
2: TERMINAL: Sn, SCREW: G/F

△ 3: TERMINAL: Sn, SCREW: Zinc

# ANYTEK

## CUSTOMER COPY

ALL RIGHTS RESERVED. REPRODUCTION OR ISSUE TO THIRD PARTIES IN ANY FORM WHATEVER IS NOT PERMITTED WITHOUT WRITTEN AUTHORITY FROM THE PROPRIETOR. PROPERTY OF ANYTEK TECHNOLOGY CO., LTD

TITLE	YK-606 With Flange&Without Cover Series(4-30P)						
PART NO.	YK606xx3xx00G			DWG NO.	8YK0003-606		
APPROVED	CHECKED	DESIGNED	DRAWN	CUST NO.			
		Jacky 11/17 12	Jacky 11/17 12		UNIT: mm	X.	±0.50
					SCALE: NONE	X.X	±0.30
						X.XX	±0.10
						X°	±1°
SHEET: 01/01				REV.: D			

# Mouser Electronics

Authorized Distributor

Click to View Pricing, Inventory, Delivery & Lifecycle Information:

## Amphenol:

<a href="#"><u>YK6060233000G</u></a>	<a href="#"><u>YK6060333000G</u></a>	<a href="#"><u>YK6060433000G</u></a>	<a href="#"><u>YK6060533000G</u></a>	<a href="#"><u>YK6060633000G</u></a>	<a href="#"><u>YK6060733000G</u></a>
<a href="#"><u>YK6060833000G</u></a>	<a href="#"><u>YK6060933000G</u></a>	<a href="#"><u>YK6061033000G</u></a>	<a href="#"><u>YK6061133000G</u></a>	<a href="#"><u>YK6061233000G</u></a>	<a href="#"><u>YK6061333000G</u></a>
<a href="#"><u>YK6061433000G</u></a>	<a href="#"><u>YK6061533000G</u></a>	<a href="#"><u>YK6061633000G</u></a>	<a href="#"><u>YK6061733000G</u></a>	<a href="#"><u>YK6061833000G</u></a>	<a href="#"><u>YK6061933000G</u></a>
<a href="#"><u>YK6062033000G</u></a>	<a href="#"><u>YK6062133000G</u></a>	<a href="#"><u>YK6062233000G</u></a>	<a href="#"><u>YK6062333000G</u></a>	<a href="#"><u>YK6062433000G</u></a>	<a href="#"><u>YK6062533000G</u></a>
<a href="#"><u>YK6062633000G</u></a>	<a href="#"><u>YK6062733000G</u></a>	<a href="#"><u>YK6062833000G</u></a>	<a href="#"><u>YK6062933000G</u></a>	<a href="#"><u>YK6063033000G</u></a>	