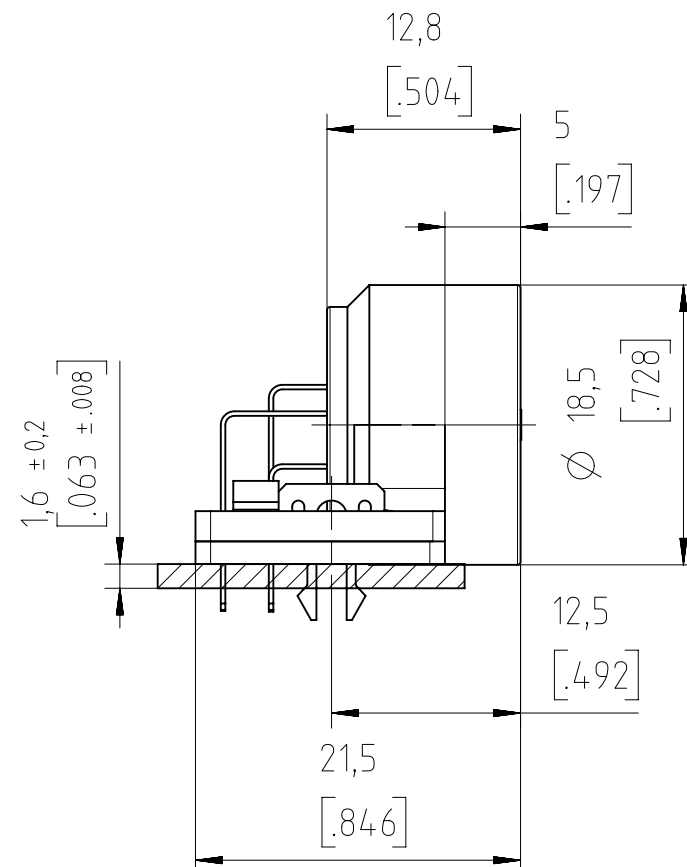
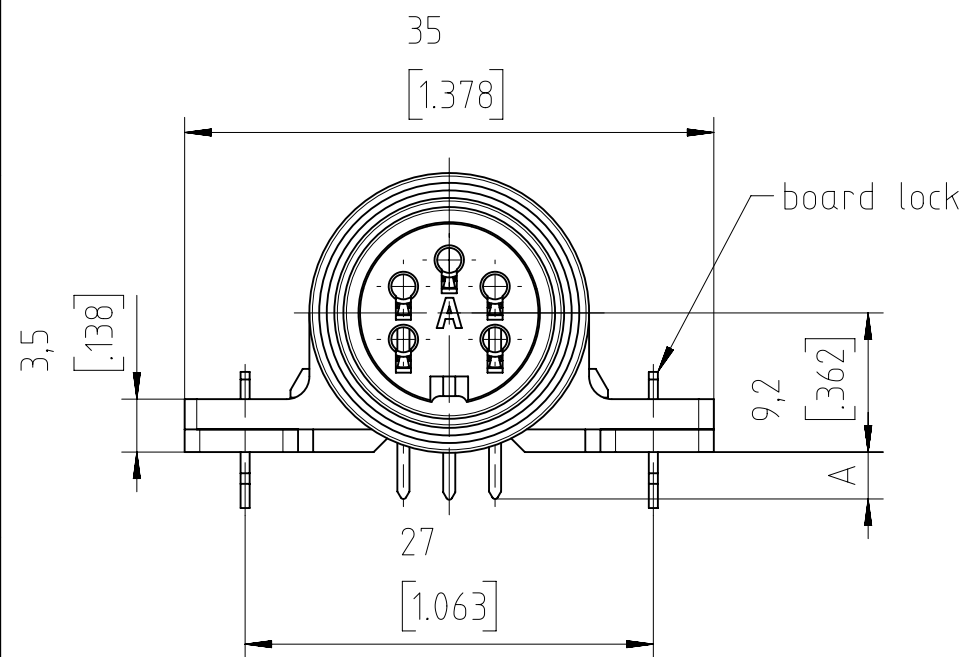


Copying of this document and giving it to others and the use or communication of the contents thereof, are forbidden without express authority. Offenders are liable to the payment of damages. All rights are reserved in the event of the grant of a patent or the registration of the utility model or design.

Weitergabe sowie Vervielfältigung dieser Unterlage, Verwertung und Mitteilung ihres Inhalts nicht gestattet, soweit nicht ausdrücklich zugestanden. Zuwiderhandlungen verpflichten zu Schadenersatz. Alle Rechte für den Fall der Patenterteilung oder Gebrauchsmuster-Eintragung vorbehalten.



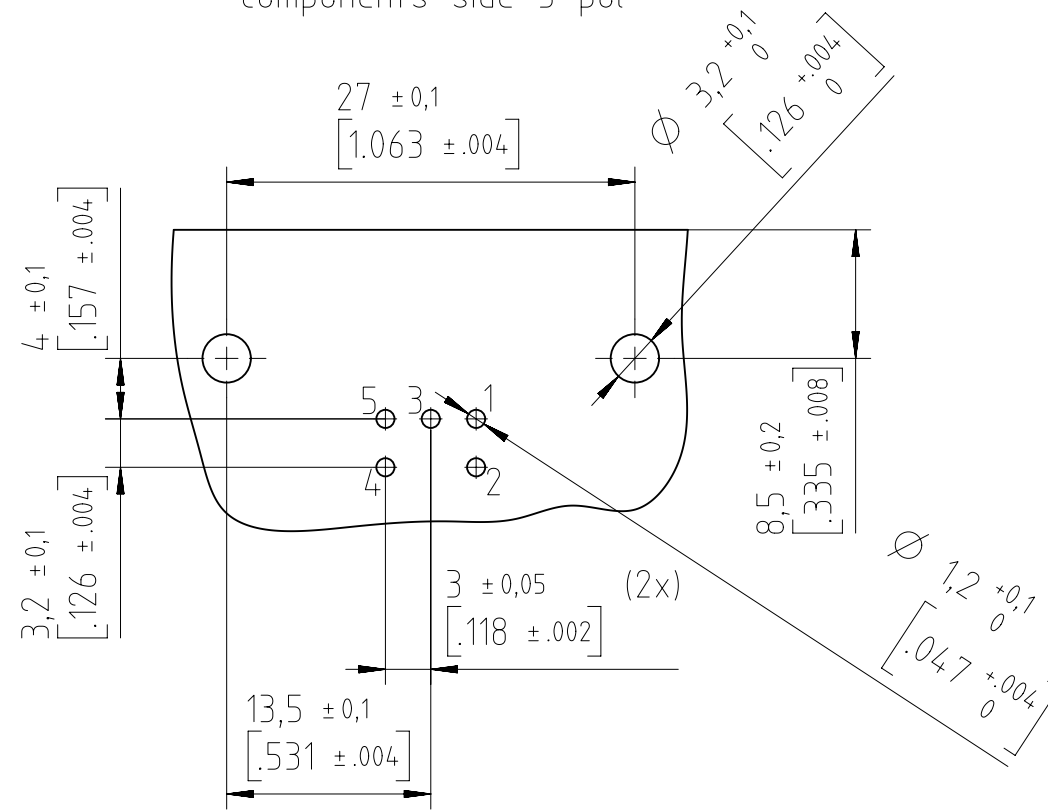
| | | | | | | | | | | | |
|---|-----------------------------------|---|-------------------|-------------------|-------------------|-----------------|-----------------|------|------|-----------------|------|
| Number of contacts | Standard | 2+3 ¹⁾ | 4 | 5 | 5S | 6 | 7 | 7 | 8 | 12 | 14 |
| Contact arrangement | DIN EN 61076-2-106 | 03-a | 04-a | 05-a | 05-b | 06-a | 07-a | 07-b | 08-a | 12-a | 14-a |
| Contact arrangement | IEC 60130-9 ²⁾ | | | - | | | - | | | - | |
| Rated voltage ³⁾ | IEC 60664-1 | 300 V (100 V) | 300 V (63 V) | 100 V (32 V) | 300 V (63 V) | 100 V (32 V) | 150 V (32 V) | | | | |
| Rated voltage | UL 1977 | 250 V | | | | | | | | 60 V | |
| Rated impulse withstand voltage ³⁾ | IEC 60664-1 | 1500 V (840 V) | 1200 V (500 V) | 1500 V (840 V) | 1200 V (500 V) | | | | | | |
| Pollution degree ³⁾ | IEC 60664-1 | 1 (2) | | | | | | | | | |
| Installation category | IEC 60664-1 | I | | | | | | | | | |
| Insulation group | IEC 60664-1 | II, 400 ≤ CTI < 600 | | | | | | | | | |
| Current rating | IEC 60512-5-2 UL 1977 | 5A/+40°C/+104°F | | | | | | | | 3A/+40°C/+104°F | |
| Insulation resistance | IEC 60512-3-1 | >10 ¹⁰ Ω ⁴⁾ | | | | | | | | | |
| Contact resistance | IEC 60512-2-1 | <5m Ω | | | | | | | | | |
| Climatic category | IEC 60668-1 | 40 / 100 / 56 | | | | | | | | | |
| Temperatur range | IEC 60668-1 | -40°C...+100°C / -40°F...+212°F | | | | | | | | | |
| IP degree | IEC 60529 | IP 40 | | | | | | | | | |
| Insertion and withdrawal force | IEC 60512-13-2 | 25N | 30N | 35N | 50N | 55N | 60N | 50N | | | |
| Mechanical operation | IEC 60512-9-1 | gold ≥1000 mating cycles | | | | | | | | | |
| Housing material | | brass and / or zinc die cast, nickel plated | | | | | | | | | |
| Dielectric material | | thermoplastic | | | | | | | | | |
| Contacts | | gold plated | | | | | | | | | |
| Termination technique | | solder | | | | | | | | | |
| Flamability | | UL 94 V0 | | | | | | | | | |
| locking system | IEC 60130-9 DIN EN 61076-2-106 | metal screw coupling; tightening torque 0,7Nm | | | | | | | | | |

¹⁾ 2 contact version: contact loading 1+3
²⁾ Edition 2000-05
³⁾ values in brackets are according to DIN EN 61076-2-106
⁴⁾ under operating conditions >10⁸ Ohm
All technical data have been measured in a laboratory environment and can be different during practical usage of the product. Any product information is for descriptive usage only and not legally binding; particularly the information does not constitute or provide any legal guaranties. Do not connect or disconnect under load. Metal housing parts shall be securely incorporated to protected ground.
Parts according to directive 2002/95/EG (RoHS).
Remark for gold plated contacts:
In order to avoid brittle inter-metallic connections, gold plated terminals have to be tin-plated in the solder area.

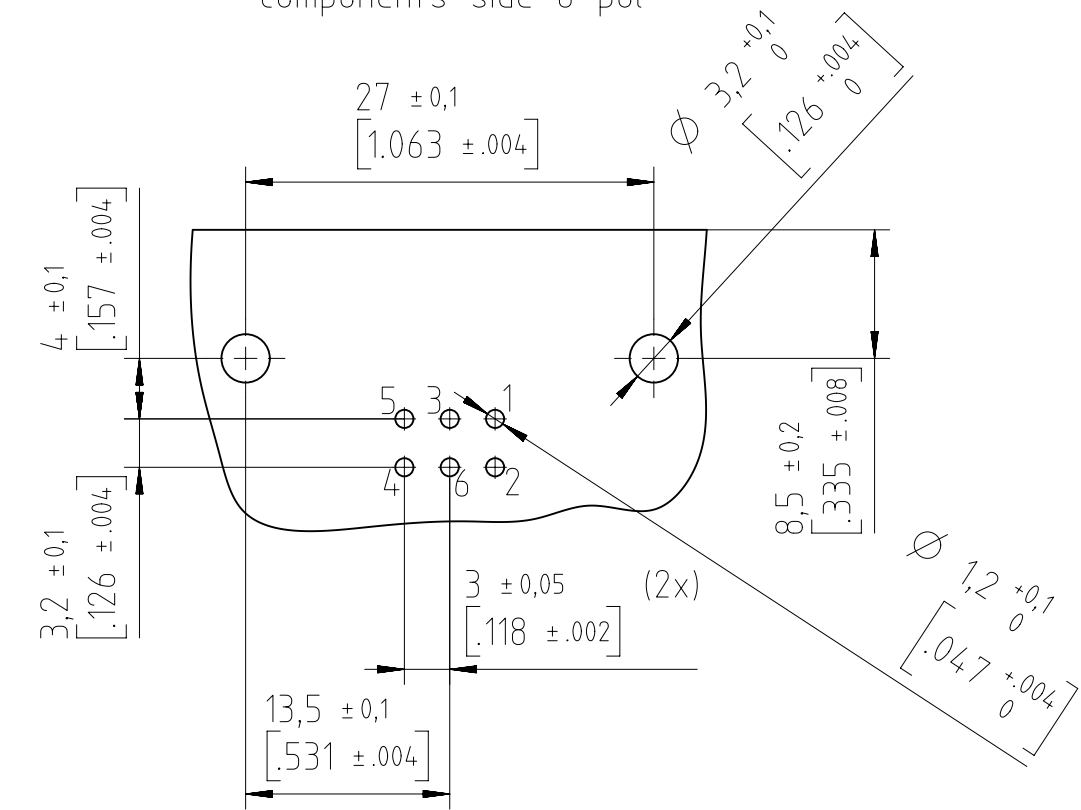
| | | | |
|---|--------------------|-------------------|-------------------|
| | 14 (14-a) | - | - |
| | 12 (12-a) | - | - |
| | 8 (08-a) | - | - |
| | 7 (07-b) | - | - |
| | 7 (07-a) | - | - |
| | 6 (06-a) | T 3403 218 U | T 3403 228 U |
| | 5 (05-b) | - | - |
| | 5 (05-a) | T 3363 218 U | T 3363 228 U |
| | 4 (04-a) | - | - |
| | 2+3 (03-a) | - | - |
| Contact arrangement View on mating side | Number of contacts | A = 3,0 [.118] | A = 8,3 [.327] |

| | | | | |
|---|----------------------------------|--|---------------|----------------------------|
| Gewicht (errechnet) / Calc WT: 0,013 kg | Zul. Abw./Tolerances: | Maßstab / Scale: 2:1 | A3 | |
| Prüfmaß / Testdimension | | CUSTOMER DRAWING | | |
| Teileindex Partindexnumber | | Gerätedose 90° Befestigungsflansch female receptacle | | |
| | Datum/Date | Name | | |
| | 26.08.2015 | IMOHR | | |
| | Status: Released | | | |
| | Inspector: 27.08.2015 MGRIM | | | |
| | Amphenol-Tuchel Electronics GmbH | | Blatt/Sheet 1 | |
| 01 | 201500617 | 26.08.2015 IMOHR | 2 Bl. | |
| Index | Änderung/Description | Datum/Date | Name | Ers. f. / Replacement for: |
| | | 4.032.967 | | |

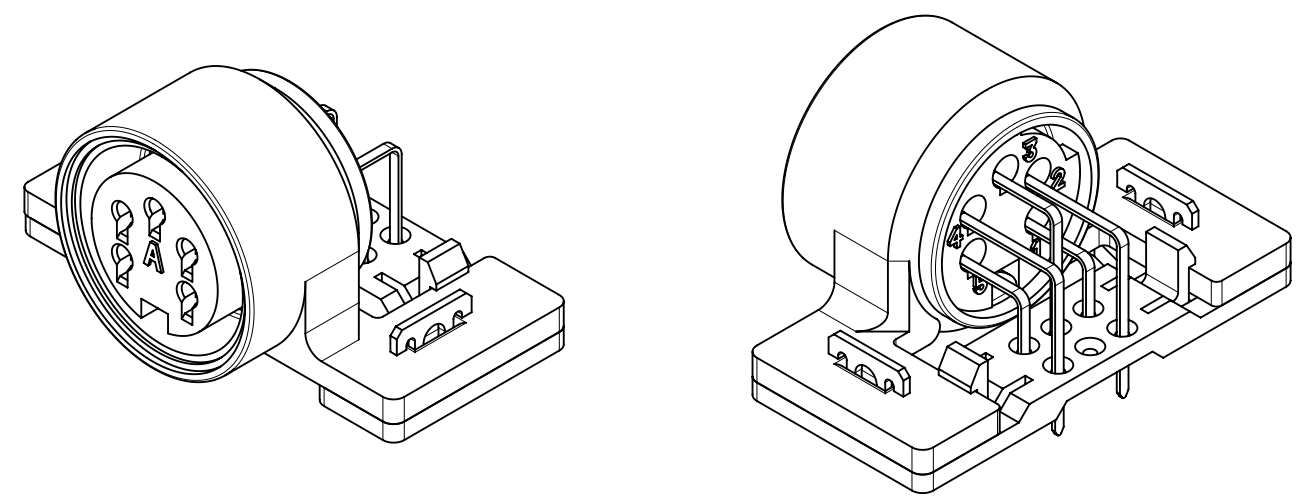
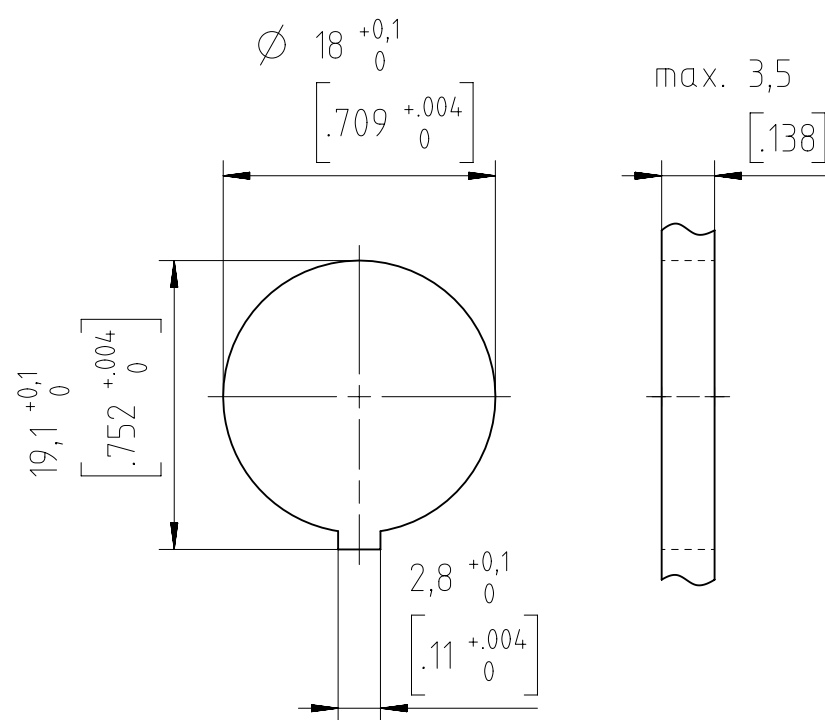
PCB-Layout
components side 5 pol



PCB-Layout
components side 6 pol



Panel cutout



| | | | | | | | | | | | | | |
|--|----------------------|------------|------------|---|-----------|-----------------------|--|-------------------|-----------------------------|--|--|-------------|--|
| Gewicht (errechnet) / Calc WT : 0,013 kg | | | | Zul. Abw./Tolerances : ± 0,10 ± 1,0° | | Maßstab / Scale : 2:1 | | A3 | | | | | |
| Prüfmaß / Testdimension | | | | | | CUSTOMER DRAWING | | | | | | | |
| Teileindex Partindexnumber | | | | Datum/Date | | | | | | | | Name | |
| | | | | Gez. | | 26.08.2015 | | IMOHR | | | | | |
| | | | | Drawn | | | | | | | | | |
| | | | | Status: Released Inspector: 27.08.2015 MGRIM | | | | | | | | | |
| | | | | Amphenol-Tuchel Electronics GmbH | | | | M GA T 3XXX 2X8 U | | | | Blatt/Sheet | |
| | | | | | | | | | | | | | |
| 01 | 201500617 | 26.08.2015 | IMOHR | | | | | | | | | 2 Bl. | |
| Index | Änderung/Description | | Datum/Date | Name | 4.032.967 | | | | Ers. f. / Replacement for : | | | | |

Mouser Electronics

Authorized Distributor

Click to View Pricing, Inventory, Delivery & Lifecycle Information:

[Amphenol:](#)

[T 3403 218](#)