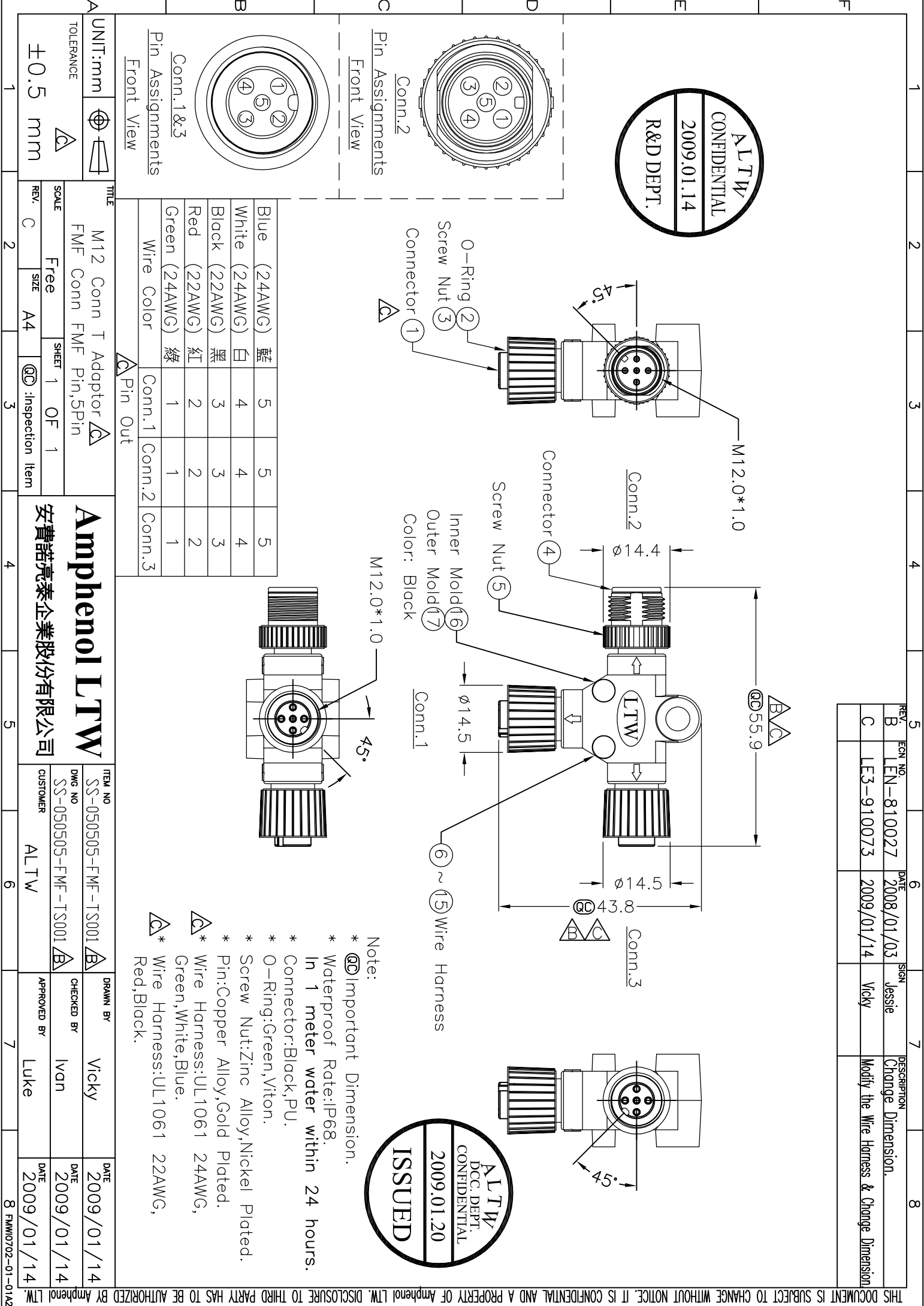
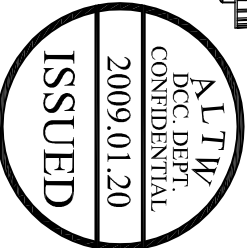
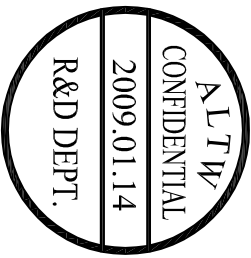
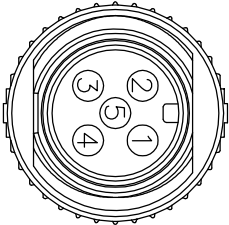
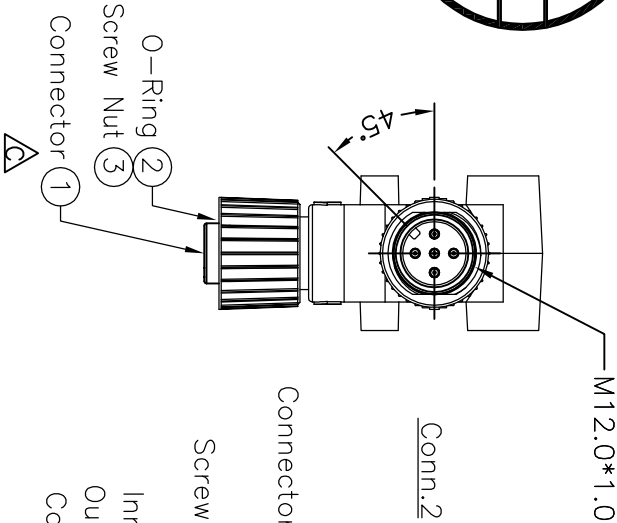
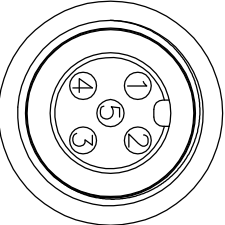


REV.	ECN NO.	DATE	SIGN	DESCRIPTION
B	LEN-810027	2008/01/03	Jessie	Change Dimension.
C	LE3-910073	2009/01/14	Vicky	Modify the Wire Harness & Change Dimension



F		1		2		3		4	
E		CONFIDENTIAL		2009.01.14		R&D DEPT.			
D									
C		Pin Assignments		Connector 4		Screw Nut		Inner M Outer M Color: E	
B		Conn.2		M12.0*1.0		M1			
A		UNIT:mm		M12 Conn T Adaptor		SCALE		Free	
		TOLERANCE		FMF Conn FMF Pin,5Pin		REV.		C	
		±0.5 mm		SIZE		A4		SHEET	
		Pin Assignments		1		OF		1	
		Front View		Inspection Item					
		Conn.1&3		Pin Out					
		Wire Color		Conn.1		Conn.2		Conn.3	
		Blue (24AWG)		藍		5		5	
		White (24AWG)		白		4		4	
		Black (22AWG)		黑		3		3	
		Red (22AWG)		紅		2		2	
		Green (24AWG)		綠		1		1	
		M12 Conn T Adaptor		FMF Conn FMF Pin,5Pin		SHEET		1	
		OF		1					
		Inspection Item							
		安費諾亮							
		4							

Blue (24AWG)	White (24AWG)	Black (22AWG)	Red (22AWG)	Green (24AWG)	Wire Color
5	4	3	2	1	Conn.1
5	4	3	2	1	Conn.2
5	4	3	2	1	Conn.3

Note:

- * @Important Dimension.
- * Waterproof Rate:IP68.
- * In 1 meter water within 24 hours.
- * Connector:Black,PU.
- * O-Ring:Green,Viton.
- * Screw Nut:Zinc Alloy,Nickel Plated.
- * Pin:Copper Alloy,Gold Plated.
- * Wire Harness:UL1061 24AWG, Green,White,Blue.
- * Wire Harness:UL1061 22AWG, Red,Black.

Mouser Electronics

Authorized Distributor

Click to View Pricing, Inventory, Delivery & Lifecycle Information:

[Amphenol:](#)

[SS-050505-FMF-TS001](#)