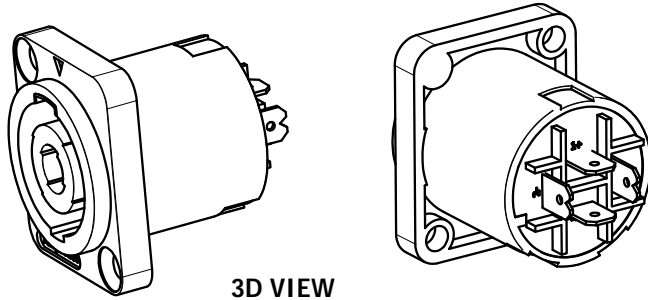
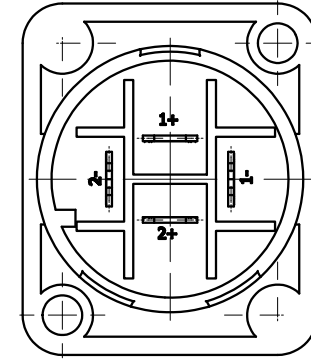
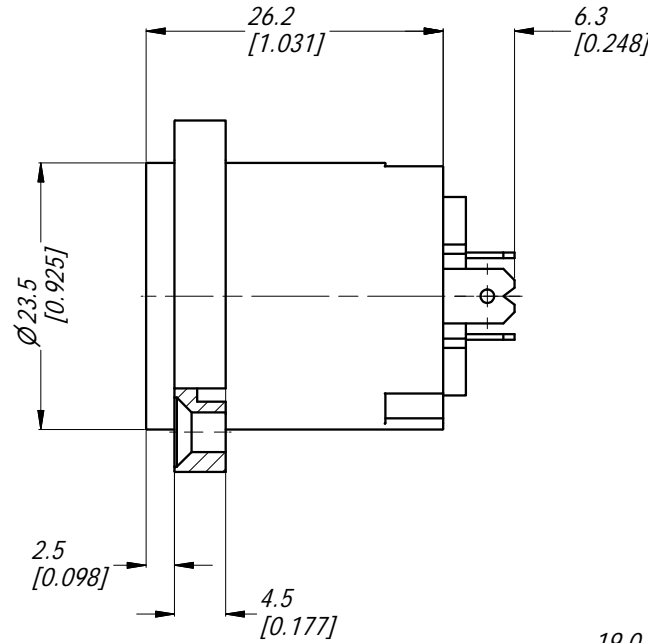
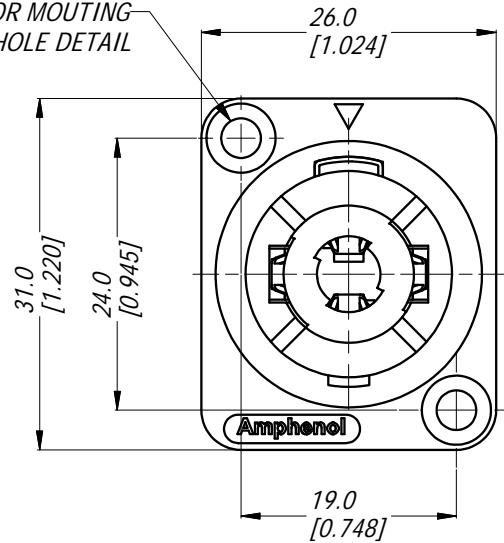


LEGEND  = KEY PRODUCT CHARACTERISTICS

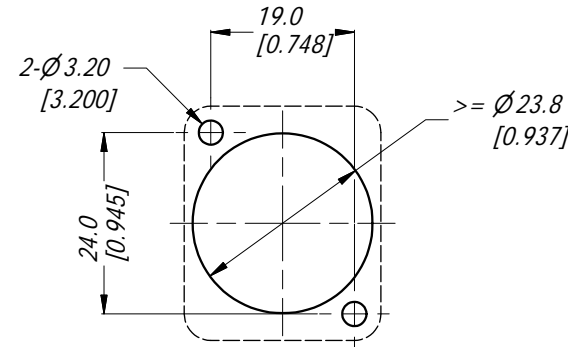
REVISION HISTORY

REV	DESCRIPTION	BY	DATE	ECN
0	FIRST ISSUE	HH	14/02/11	8990
1	ADD PN SP-4-MDT-8	MH	11/09/13	---

REFER TO TABLE OF  
PART No FOR MOUNTING  
HOLE DETAIL



3D VIEW



PANEL CUTOUT (1 : 1)



			UNLESS OTHERWISE SPECIFIED TOLERANCE TO BE		THIS DOCUMENT IS THE PROPERTY OF AMPHENOL AUSTRALIA PTY. LTD. NO PART THEREOF MAY BE REPRODUCED AND USED WITHOUT THE PRIOR WRITTEN CONSENT OF THE OWNER			<b>Amphenol</b> Amphenol Australia Pty.Ltd, 2 Fiveways Blvd, Keysborough, VIC 3173		
PART NUMBER	MOUNTING HOLE (mm)	SHELL COLOUR	LINEAR	ANGULAR	MATERIAL: REFER TO COMPONENTS	DRN: HH	DATE: 10/02/11	TITLE: <b>SP SERIES CONNECTOR LOUDSPEAKER 4 POLE, SOLDER</b>		
SP-4-MD	Ø3.5 THRU HOLES	BLACK	X ± 0.5	X' ± 1		CKD: MH	DATE: 11/09/13			
SP-4-MD-8	Ø3.5 THRU HOLES	GREY	X.X ± 0.1	X.X' ± 30'	BREAK ALL SHARP EDGES AND REMOVE ALL BURRS	APP'D: PM	DATE: 11/09/13	PART No. <b>REFER TO TABLE</b>		
SP-4-MDT	Ø2.3 SELF TAPPING HOLES	BLACK	X.XX ± 0.05	X.XX' ± 15'	DO NOT SCALE					
SP-4-MDT-8	Ø2.3 SELF TAPPING HOLES	GREY	DIMENSIONS IN MILLIMETRES		FINISH:	SCALE: <b>3:2</b>	SIZE: <b>A4</b>	CAD FILE: 55010738000210	55010738-000-2	SHEET 2/2

# Mouser Electronics

Authorized Distributor

Click to View Pricing, Inventory, Delivery & Lifecycle Information:

[Amphenol:](#)

[SP-4-MD](#)