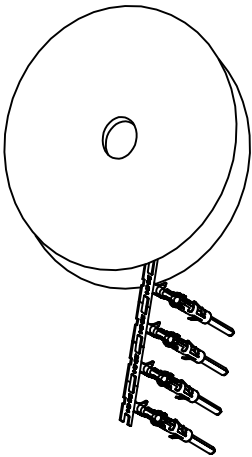


REVISIONS					
REV	ECO	DESCRIPTION	DATE	BY	APPR
A1	-	RELEASED DRAWING	Jul-16-18	Flan	Tommy



CONTACT ORIENTATION ON ROLL(3000PCS/COIL)

NOTES : (UNLESS OTHERWISE SPECIFIED)

1. MATERIAL :

- 1.1. CONTACT BODY : COPPER ALLOY.
1.2. OUTER SPRING : STAINLESS STEEL.

2. SPECIFICATIONS :

- 2.1 CURRENT RATING : 13A MAX.
2.2 TERMINATION TYPE : CRIMPING.
2.3 WIRE RANGE : 26~24AWG.
2.4 WIRE INSULATION DIA(MAX) : ϕ 2.1mm.

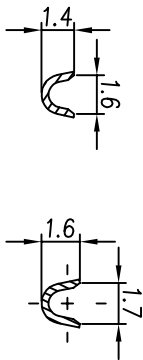
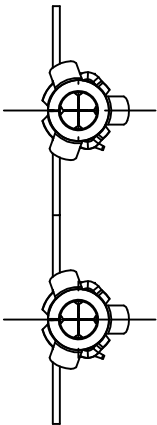
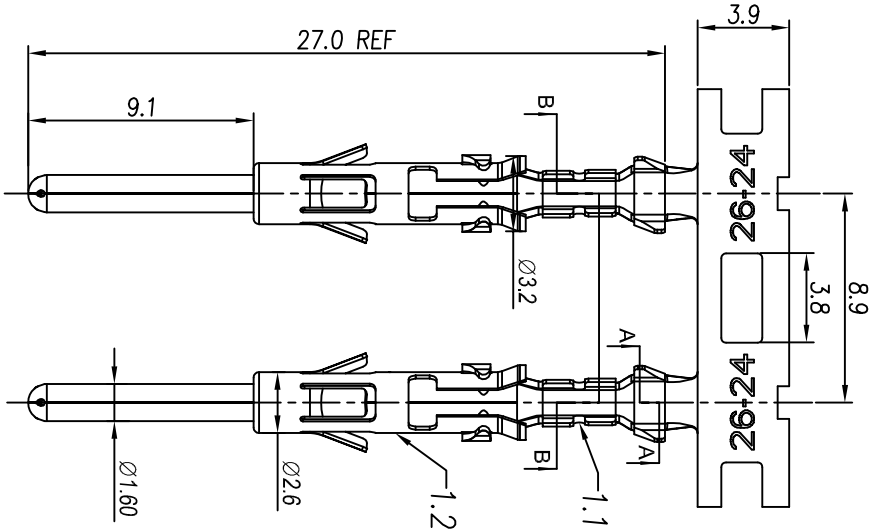
3. RoHS COMPLIANT.

4. ALL DIMENSIONS ARE FOR REFERENCE USE ONLY.

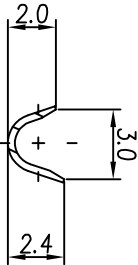
5. AVAILABLE TOOLS :

- 5.1 HAND CRIMPER : MFX-3954.
5.2 CRIMP APPLICATOR : MFX-3957.
5.3 EXTRACTION TOOL : QXRT16.

P/N	CONTACT PLATING(MATING AREA)
SP24M2T	TIN PLATING OVER NICKEL.
SP24M2N	NICKEL PLATING OVER COPPERIZE.
SP24M2F	GOLD FLASH PLATING OVER NICKEL.
SP24M2G5	5 μ "GOLD PLATING OVER NICKEL.
SP24M2G10	10 μ "GOLD PLATING OVER NICKEL.
SP24M2G15	15 μ "GOLD PLATING OVER NICKEL.
SP24M2G30	30 μ "GOLD PLATING OVER NICKEL.



SECTION B-B



SECTION A-A

QUANTITY	PART NUMBER	DESCRIPTION	ITEM
MATERIALS LIST			
UNLESS OTHERWISE SPECIFIED			
1) All dimensions are in millimeters.			
2) Tolerances are as follows:			
1 PL DEC 20.30 Fractions 1/104			
3 PL DEC 20.30 Angles 1°			
3) Note reference = \triangle			
MATERIAL SPECIFICATIONS			
CUSTOMER: Tommy Jul-16-18			
PROCESS SPECIFICATIONS			
THIS DRAWING IS SUBMITTED FOR INFORMATION ONLY. IT DOES NOT REPRESENT THE FINAL DESIGN. SPECIFICATIONS AND PERFORMANCE DATA OF REPRODUCTION ARE LIMITED. ALL MANUFACTURING VARIATIONS.			
NEXT ASST:			
SCALE: NONE			
SHEET 1 OF 1			

Amphenol

Sine Systems - www.amphenol-sine.com
44724 Morley Drive
Clinton Township, MI 48036

ECO-MATE PIN CONTACT.
STAMPED.26-24AWG.SIZE 16

Mouser Electronics

Authorized Distributor

Click to View Pricing, Inventory, Delivery & Lifecycle Information:

[Amphenol:](#)

[SP24M2T](#)