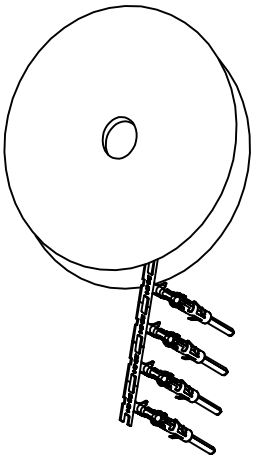


REVISIONS				
REV	ECO	DESCRIPTION	DATE	BY APPR
A1	-	RELEASED DRAWING	Jul-16-18	Flan Tommy



CONTACT ORIENTATION ON ROLL(3000PCS/COIL)

NOTES : (UNLESS OTHERWISE SPECIFIED)

1. MATERIAL :

- 1.1. CONTACT BODY : COPPER ALLOY.
1.2. OUTER SPRING : STAINLESS STEEL.

2. SPECIFICATIONS :

- 2.1 CURRENT RATING : 13A MAX.
2.2 TERMINATION TYPE : CRIMPING.
2.3 WIRE RANGE : 26~24AWG.
2.4 WIRE INSULATION DIA(MAX) : ϕ 2.1mm.

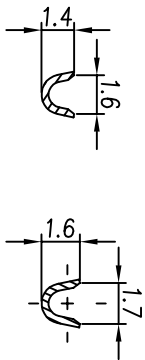
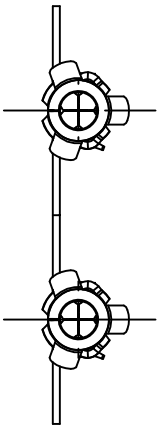
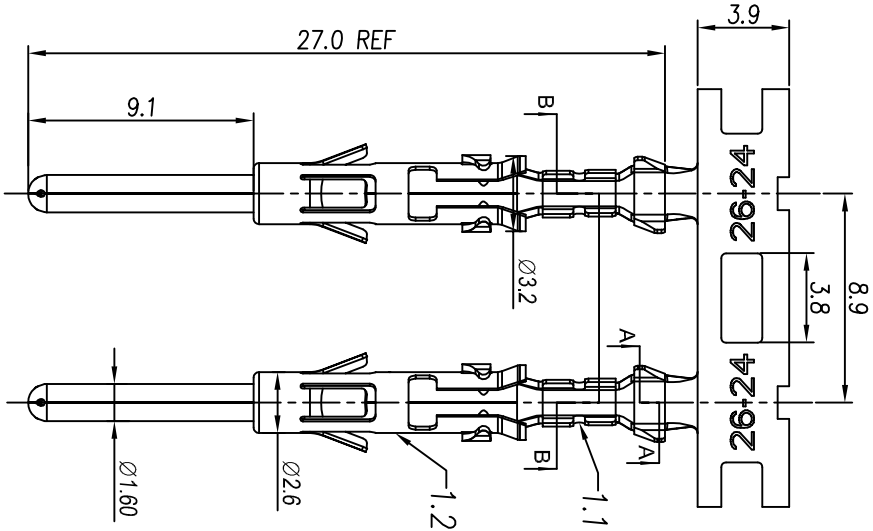
3. RoHS COMPLIANT.

4. ALL DIMENSIONS ARE FOR REFERENCE USE ONLY.

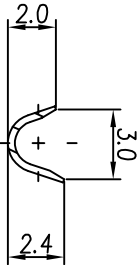
5. AVAILABLE TOOLS :

- 5.1 HAND CRIMPER : MFX-3954.
5.2 CRIMP APPLICATOR : MFX-3957.
5.3 EXTRACTION TOOL : QXRT16.

P/N	CONTACT PLATING(MATING AREA)
SP24M2T	TIN PLATING OVER NICKEL.
SP24M2N	NICKEL PLATING OVER COPPERIZE.
SP24M2F	GOLD FLASH PLATING OVER NICKEL.
SP24M2G5	5 μ "GOLD PLATING OVER NICKEL.
SP24M2G10	10 μ "GOLD PLATING OVER NICKEL.
SP24M2G15	15 μ "GOLD PLATING OVER NICKEL.
SP24M2G30	30 μ "GOLD PLATING OVER NICKEL.



SECTION B-B



SECTION A-A

QUANTITY	PART NUMBER	DESCRIPTION	ITEM
MATERIALS LIST			
UNLESS OTHERWISE SPECIFIED: 1) All dimensions are in millimeters. 2) Tolerances are as follows: 1 PL DEC 20.30 Fractions 1/164 3 PL DEC 20.08 Angles 1° 3) Note reference =			
SIGNATURES		DATE	
DRAWN: Hm		Jul-16-18	
CHECKED: Jd		Jul-16-18	
ENGINEER:		APPROVAL: Tommy	
MATERIAL SPECIFICATIONS:		CUSTOMER: Juh-16-18	
PROCESS SPECIFICATIONS:		ECO-MATE PIN CONTACT. STAMPED.26-24AWG.SIZE 16	
NEXT ASSY:		SIZE TYPE: B C- SCALE: NONE	
		DRAWING NO: SP24M2XX	
		REVISION: A1	

Amphenol

Sine Systems - www.amphenol-sine.com
44724 Morley Drive
Clinton Township, MI 48036

Mouser Electronics

Authorized Distributor

Click to View Pricing, Inventory, Delivery & Lifecycle Information:

[Amphenol:](#)

[SP24M2G10](#)