

NOTES:

1. MATERIALS AND FINISHES:

BODY, CONTACT - BeCu, GOLD PLATING
SPRING RING - BeCu, NICKEL PLATING
INSULATORS - PTFE, NATURAL
O-RING - SILICONE RUBBER

2. ELECTRICAL:

A. IMPEDANCE: 50 OHM
B. FREQUENCY RANGE: DC - 6 GHz

3. PHYSICAL:

A. DURABILTIY: 100 CYCLES MIN.
B. TEMPERATURE RANGE: -65° C TO +165° C
C. MAINTAINS IP67 SEAL WHEN MATED WITH SMP-MSSB-C07
OR SIMILAR IP67 JACK. SEE SMP-MSSB-C07 DATASHEET
FOR MATED PAIR DETAILS.

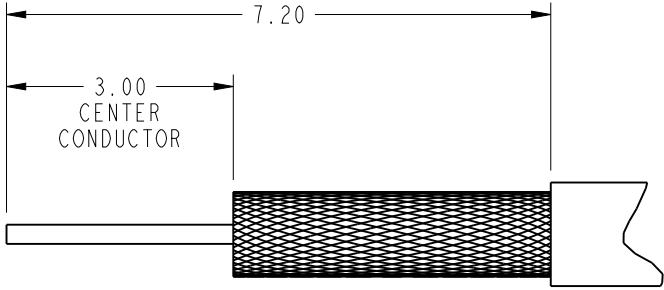
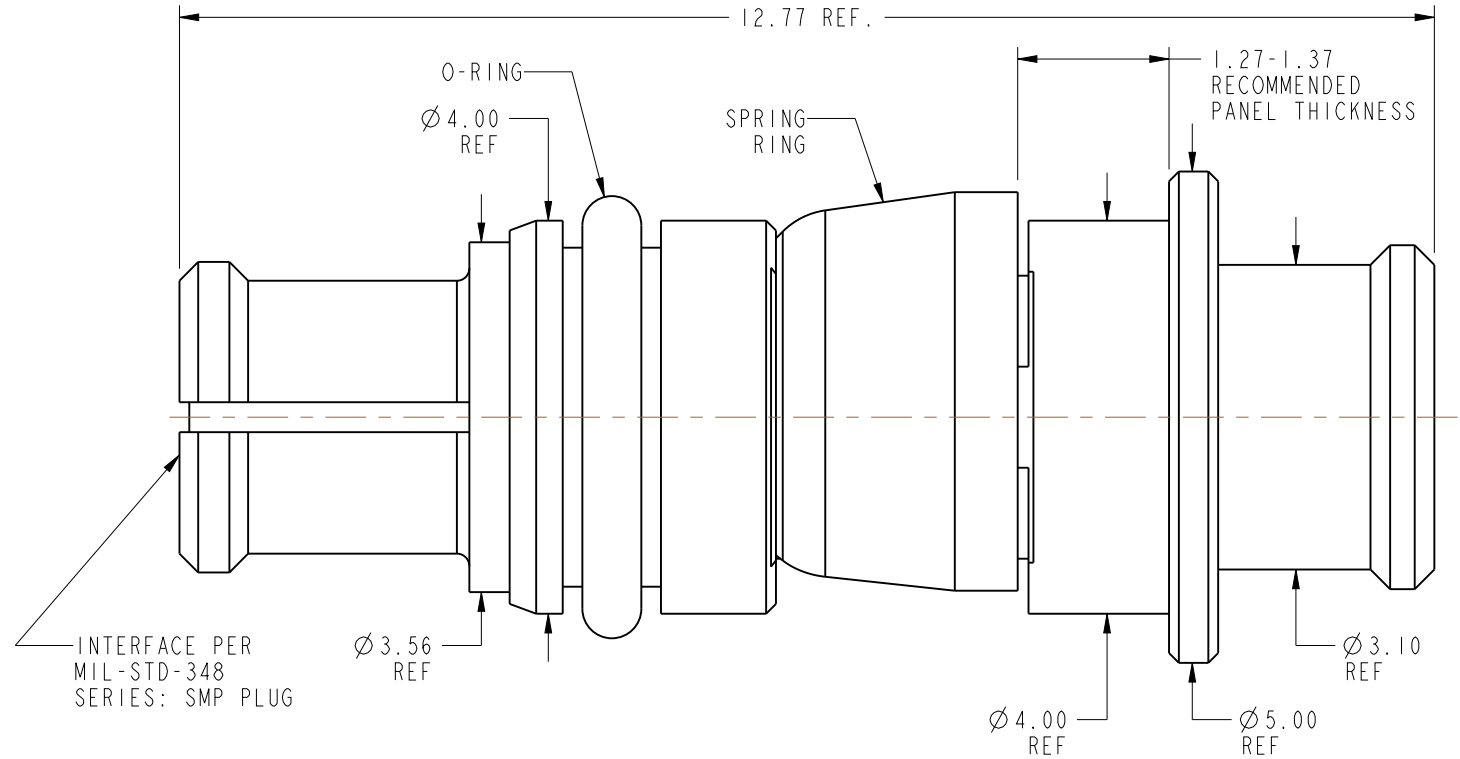
4. PACKAGING:

A. QUANTITY: SINGLE PACK
B. MARKING: BAG TO BE MARKED
"AMPHENOL RF, SMP-FS-C07-1, AND DATE CODE"

5. CABLE ASSEMBLY INSTRUCTIONS:

A. TRIM CABLE AS SHOWN.
B. SLIDE INSULATOR DISC OVER CABLE CENTER CONDUCTOR.
C. SOLDER CENTER CONTACT TO CABLE CENTER CONDUCTOR.
D. INSERT CABLE INTO CONNECTOR REAR BODY.
E. SOLDER OUTER CONDUCTOR OF CABLE TO CONNECTOR REAR BODY.
F. AFTER PUSHING CONNECTOR THROUGH THE PANEL HOLE,
INSTALL O-RING OVER Ø4.00 INTO POSITION SHOWN BELOW.

6. SHOWS CABLE ENTRY DIMENSIONS

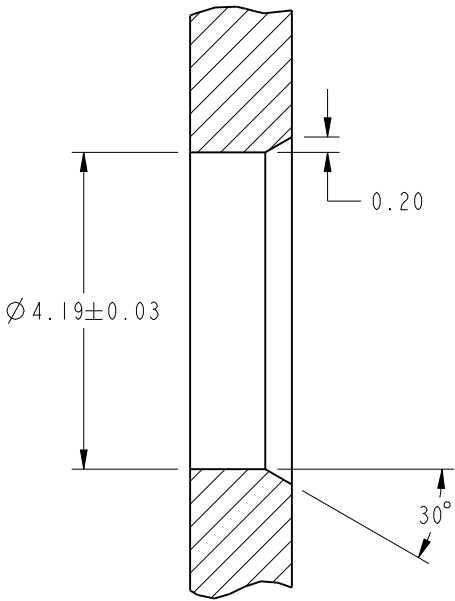


RECOMMENDED CABLE STRIPPING DIMENSIONS

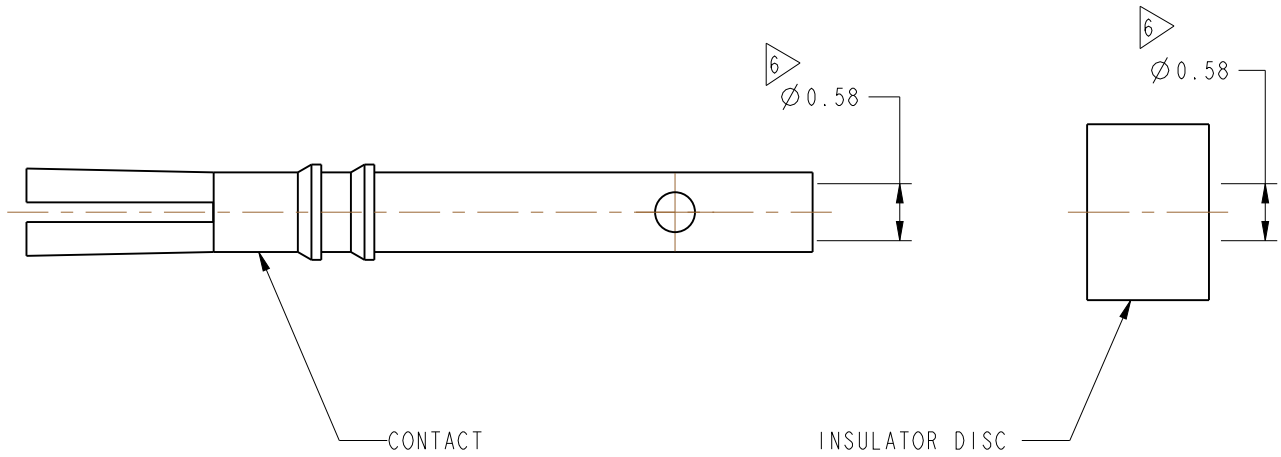
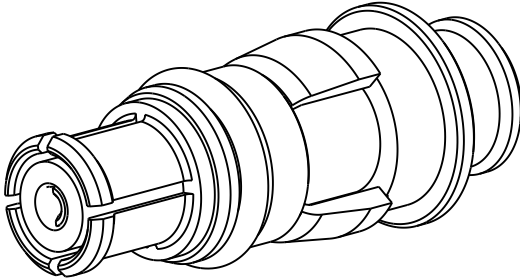
THIRD ANGLE PROJ.

REVISIONS

REV	DESCRIPTION	DATE	ECO	APPR
A	RELEASE TO MFG.	16-Jun-14	50045	MB
B	UPDATED TITLE BLOCK, ADDED NOTE 3C, UPDATED NOTE 5	17-SEP-20	15336	EH



RECOMMENDED PANEL HOLE



CUSTOMER OUTLINE DRAWING
ALL OTHER SHEETS ARE FOR INTERNAL USE ONLY

<p>UNLESS OTHERWISE SPECIFIED, DIMENSIONS ARE IN METRIC AND TOLERANCES ARE: <0.5mm ± 0.05mm 0.5 - 6mm ± 0.1mm 6 - 30mm ± 0.2mm 30 - 120mm ± 0.3mm ANGLES ±1°</p> <p>NOTICE - These drawings, specifications, or other data (1) are, and remain the property of Amphenol corp. (2) must be returned upon request; and (3) are confidential and not to be disclosed to any person other than those to whom they are given by Amphenol Corp. the furnishing of these drawings, specifications, or other data by Amphenol Corp., or to any other person to anyone for any purpose is not to be regarded by implication or otherwise in any manner licensing, granting rights to permitting such holder or any other person to manufacture, use or sell any product, process or design, patented or otherwise, that may in any way be related to or disclosed by said drawings, specifications, or other data.</p>	MATERIAL SEE NOTES	DRAWN J.CHEN	DATE 18-Jul-14	TITLE SMP, PLUG FOR 0.086" CABLE IP67		Amphenol RF www.amphenolrf.com	
	REFERENCE EAR # 5814 & 615X-3057-999	ENGINEER E.WANKOFF	DATE 07-Jun-13				
	CONFIGURATION LEVEL: In Work	APPROVED S.HSIEH	DATE 18-Jul-14	SCALE: 13.0:1.0 SHEET 2 OF 2		DRAWING NO. SMP-FS-C07-1	
	FINISH	CAD FILE		DWG SIZE B		REV B	ITEM NO. SMP-FS-C07-1 PART NO. SMP-FS-C07-1

Mouser Electronics

Authorized Distributor

Click to View Pricing, Inventory, Delivery & Lifecycle Information:

[Amphenol:](#)

[SMP-FS-C07-1](#)