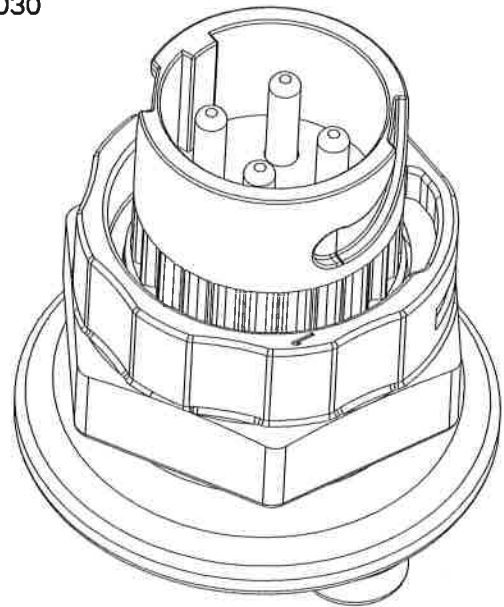
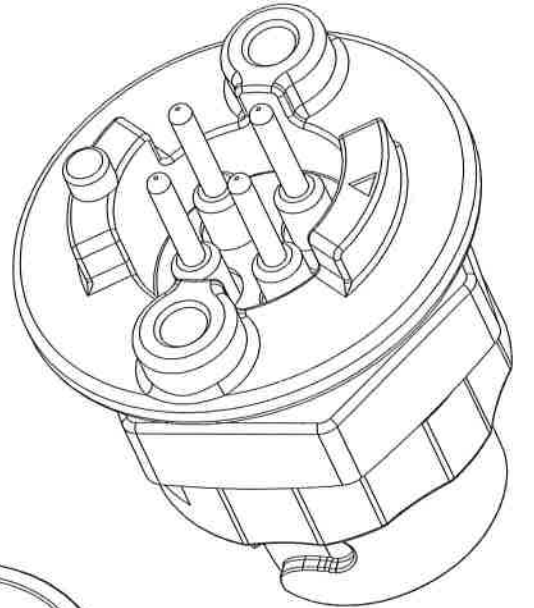
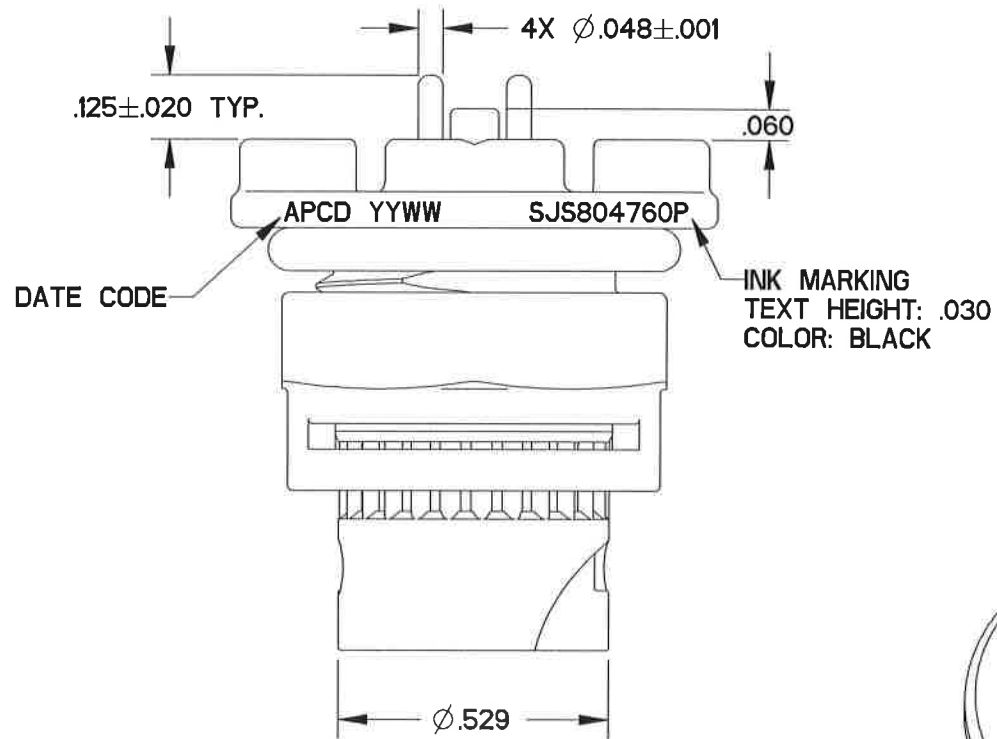
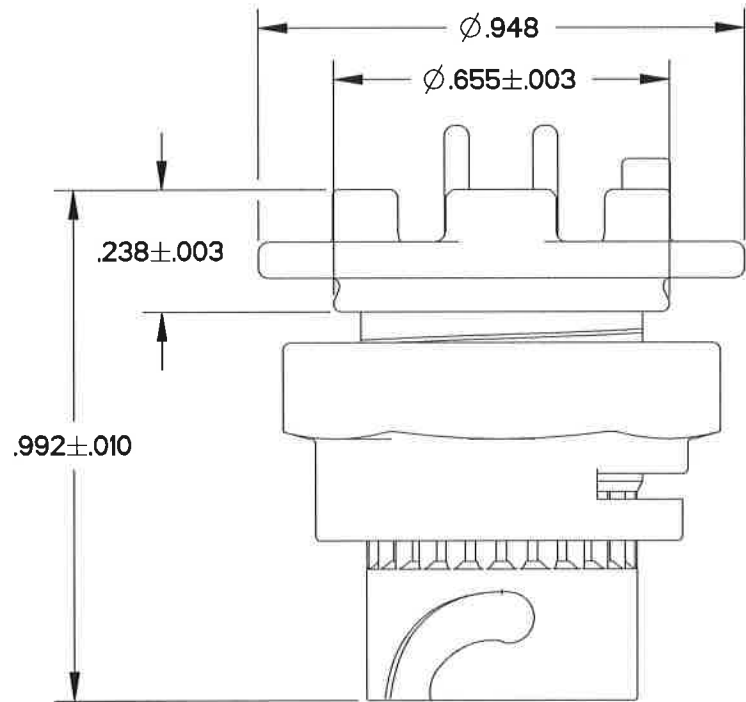
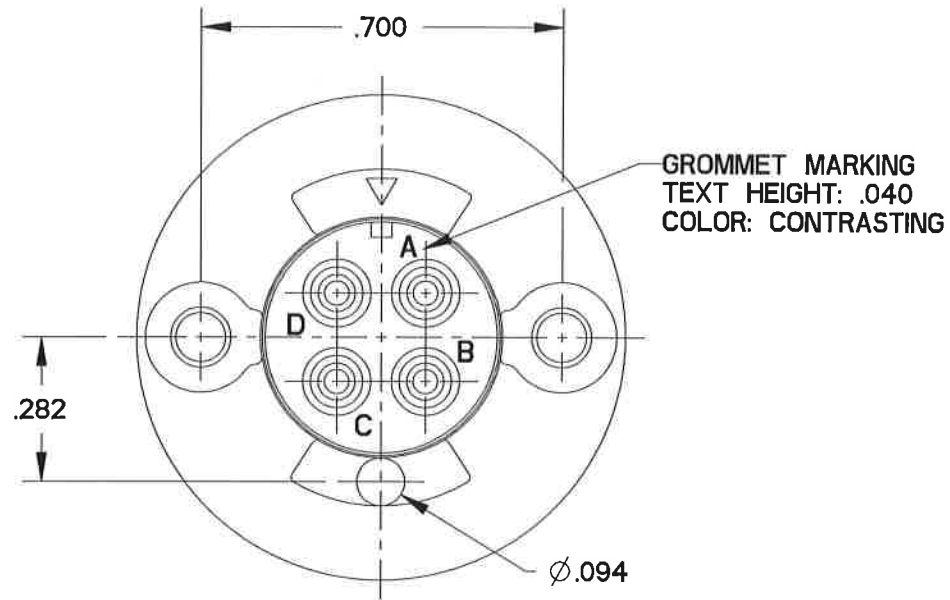


SJS804760P

TABLE I - PART NO. SCHEME

APCD P/N	CONTACTS SUPPLIED	PART MARKING
SJS804760P	NONE	SJS804760P
SJS804761P	(4) M39029/58-364	
SJS804762P	(4) CNP8310160	

REV	ECN	APP'D
-	7815	8/29/16



NOTES:

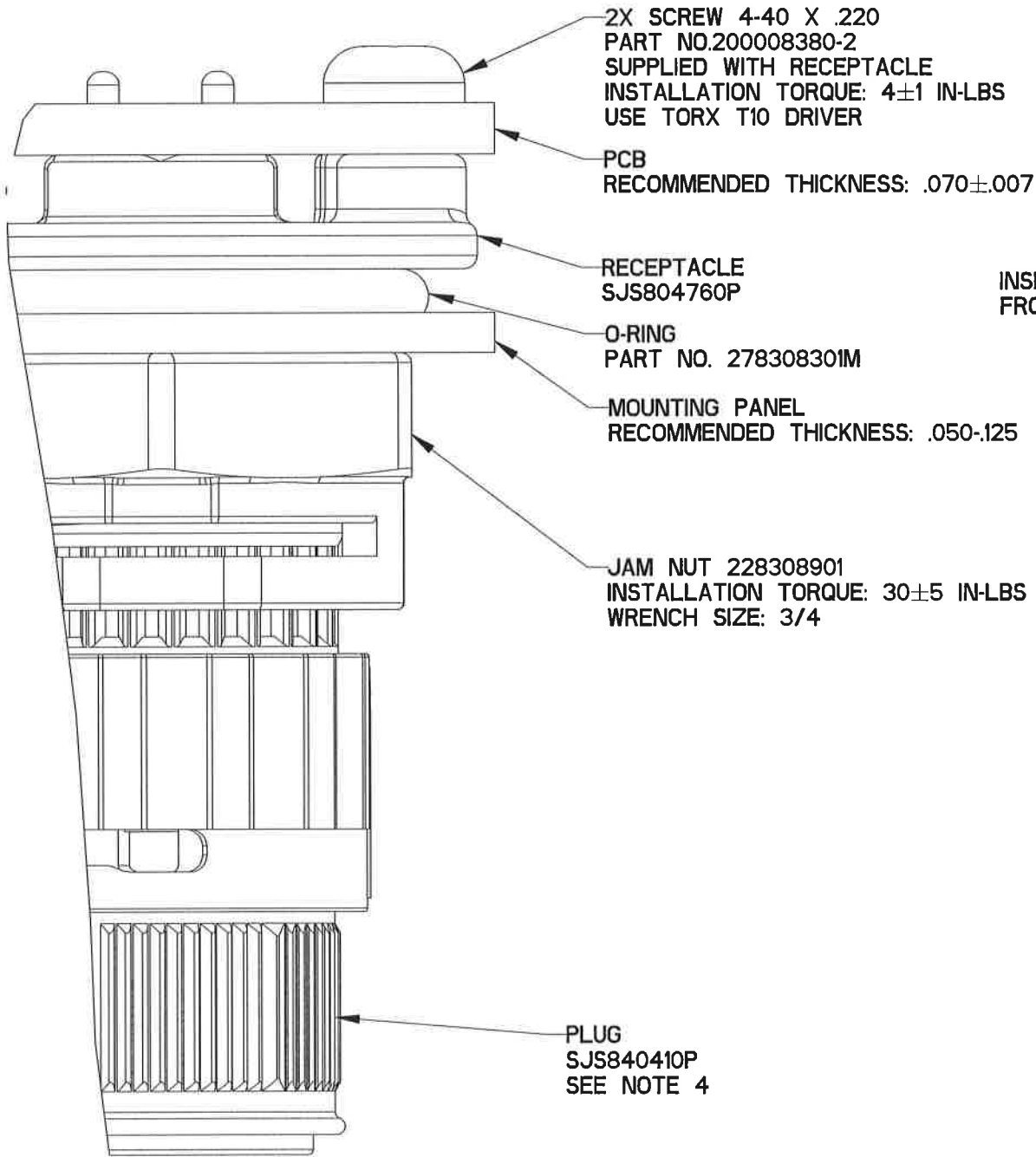
- MATERIALS:
OUTER HOUSING: POLYETHERIMIDE
INNER HOUSING: POLYETHERIMIDE
JAM NUT: PA66
CONTACT RETAINER: STAINLESS STEEL
O-RING: CONDUCTIVE SILICONE RUBBER
GROMMET: SILICONE RUBBER PER A.A-59588
- FINISH:
OUTER HOUSING: NICKEL, 200 MICROINCHES MINIMUM
OVER COPPER, 120 MICROINCHES MINIMUM
- ACCEPTS M39029/58-364 PIN CONTACTS (-1)
OR PC TAIL CONTACTS AS SHOWN(-2)
- MATES WITH SJS840410P/11P
- SUPPLIED WITH DUST CAP
- THE PRODUCT ESTIMATED WEIGHT:
6.5g(LESS CONTACTS) 7.5g (WITH PC TAIL CONTACTS)

O-RING NOT SHOWN FOR
VERTICAL MOUNTING
DIMENSION CLARIFICATION

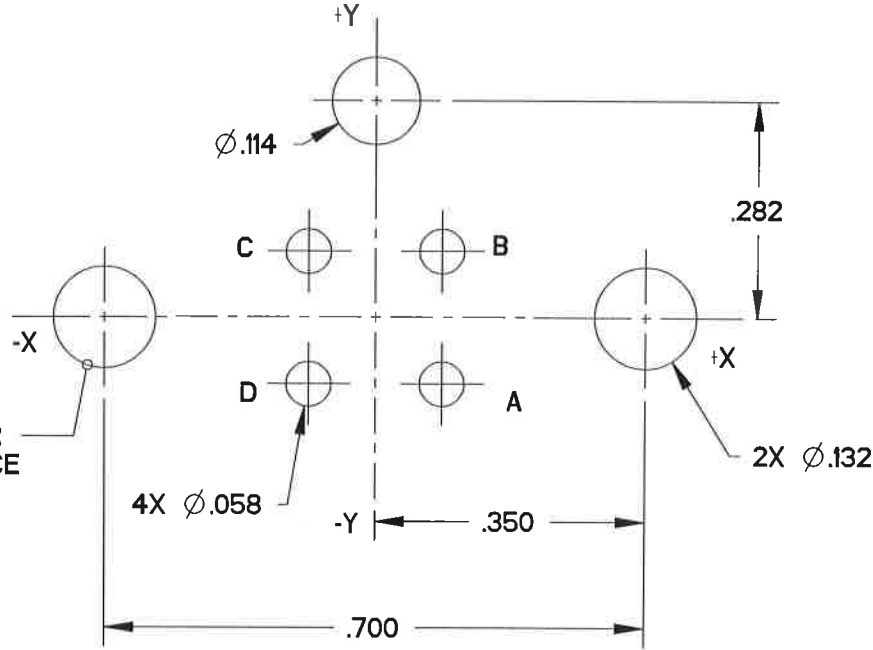
DIMENSIONS	TOLERANCES	PROJECTION	Amphenol Pcd SPECIFICATION DRAWING		TITLE JAM NUT RECEPTACLE SHELL SIZE 8 SJS PEGASUS 4 POS SIZE 16		
ANSI Y14.5M UNITS: INCHES Pro/E FILE	.XX ±0.01 .XXX ±0.005 ANGLES ±2.0°		ENGR ANDREW.WANG May-10-16	CHKD 8/29/16	SIZE B	DWG NO. SJS804760P	REV -
ORIGINAL	THIS DOCUMENT CONTAINS PROPRIETARY INFORMATION WHICH IS THE CONFIDENTIAL PROPERTY OF AMPHENOL PCD INC., BEVERLY, MA		APPD 8/29/16	CODE: 58982		SCALE: 8:3	SHEET 1 OF 2

CONTACT HOLE LOCATIONS		
CONTACT NUMBER	LOCATION	
	X AXIS	Y AXIS
A	.0863	-.0863
B	.0863	.0863
C	-.0863	.0863
D	-.0863	-.0863

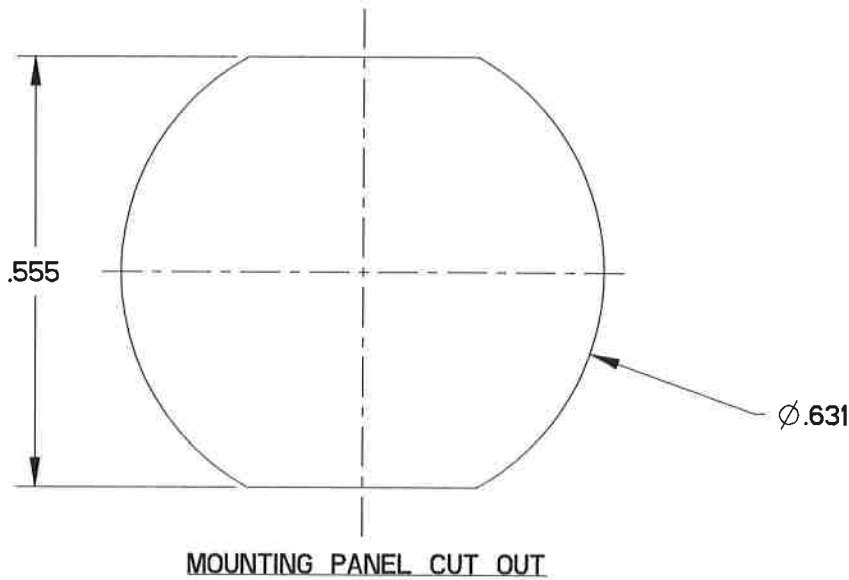
PCB ARRANGEMENT
RECOMMENDED DIMENSIONAL TOLERANCE
XXX±.002



INSERT CONNECTOR
FROM THIS SURFACE



PIN LOCATION
ON PCB



MOUNTING PANEL CUT OUT

Mouser Electronics

Authorized Distributor

Click to View Pricing, Inventory, Delivery & Lifecycle Information:

[Amphenol:](#)

[SJS804760P](#)