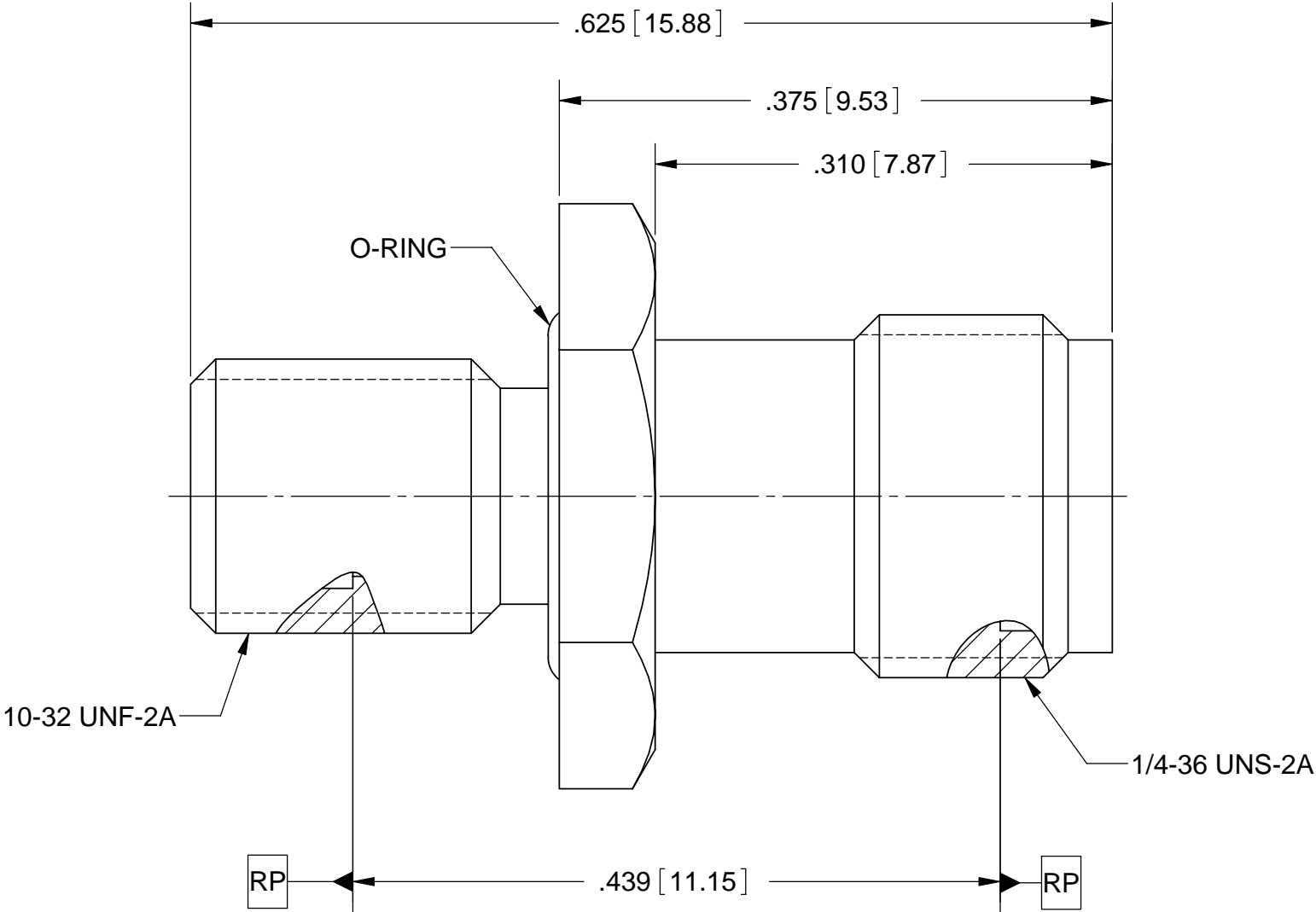
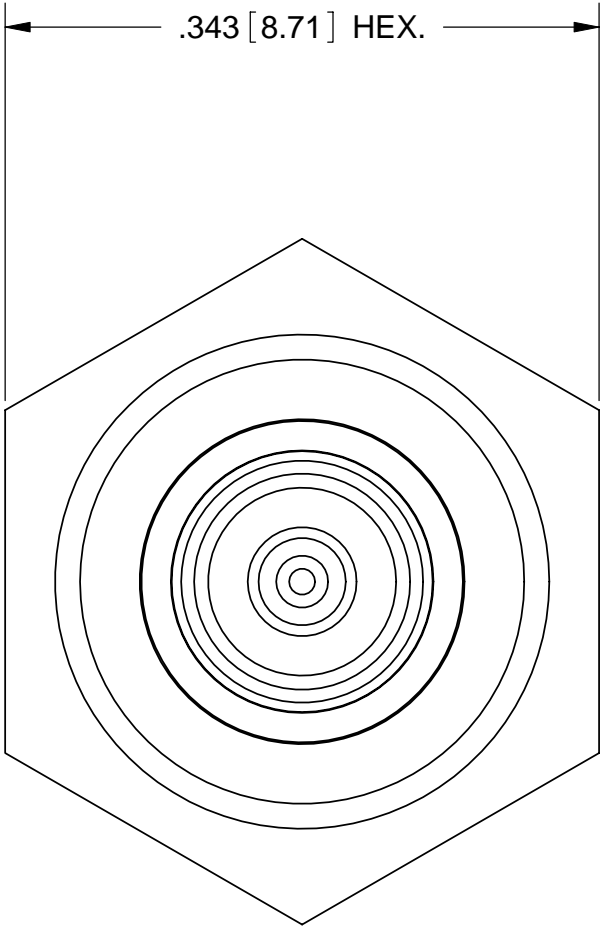


PRODUCT DATA DRAWING

REVISION HISTORY			
REV	DESCRIPTION	DATE	APPROVED
-	DCN 36626	03/09	STW



MATERIAL:

- BODY:

CONTACT:

INSULATOR:

O-RING:
- STAINLESS STEEL PER AMS-5640,
ALLOY UNS S30300, TYPE 1

BERYLLIUM COPPER PER ASTM B196,
ALLOY No. UNS C17300, TD04

PTFE PER ASTM D1710, TYPE I, GRADE 1, CLASS B

SILICONE RUBBER PER A-A-59588, CLASS 2B, GRADE 50/60

FINISH:

- BODY:

CONTACT:
- PASSIVATED PER AMS-2700.

GOLD PER ASTM B488, TYPE II,
CODE C, CLASS 1.27, OVER NICKEL
PER AMS-QQ-N-290, CLASS 1, .00005" MIN.

PERFORMANCE:

- IMPEDANCE:

FREQ. RANGE:
- 50 OHMS

DC TO 18.0 GHz

MATERIAL:	SEE NOTES	DIMENSIONS ARE IN INCHES TOLERANCES: FRACTIONAL: ±1/64 ANGULAR: X° ±1°0' X°X' ±15' DECIMAL: .X ±.030 .XX ±.010 .XXX ±.005 INTERPRET DIMENSIONS AND TOLERANCES PER ASME Y14.5M - 1994		UNLESS OTHERWISE SPECIFIED 1) ALL DIMENSIONS ARE IN INCHES (MILLIMETERS) 2) ALL DIMENSIONS ARE AFTER PLATING. 3) BREAK CORNERS & EDGES .005 R. MAX. 4) CHAM. 1ST & LAST THREADS. 5) SURFACE ROUGHNESS 63-MIL-STD-10. 6) DIA.'S ON COMMON CENTERS TO BE CONCENTRIC WITHIN .005 T.I.R. 7) REMOVE ALL BURRS		<div>SV Microwave, Inc.</div> <div>2400 Centrepark West Drive, Suite 100 West Palm Beach, FL 33409</div> <div>TITLE: SMP SMOOTH BORE MALE TO SMA FEMALE PANEL MOUNT ADAPTER</div>			
FINISH:	SEE NOTES								
SURFACE AREA:	N/A								
PROPRIETARY		THIRD ANGLE PROJECTION <div></div>		DRAWN: DAL 03/31/09		SIZE		CAGE CODE	DWG. NO.
THE INFORMATION CONTAINED IN THIS DRAWING IS THE SOLE PROPERTY OF SV MICROWAVE, INC. ANY REPRODUCTION IN PART OR AS A WHOLE WITHOUT THE WRITTEN PERMISSION OF SV MICROWAVE, INC IS PROHIBITED.				CHECKED: STW 03/31/09		B		95077	
		APPROVED: STW 03/31/09		SCALE: 9:1				SHEET 1 OF 1	

Mouser Electronics

Authorized Distributor

Click to View Pricing, Inventory, Delivery & Lifecycle Information:

[Amphenol:](#)

[SF1112-6036](#)