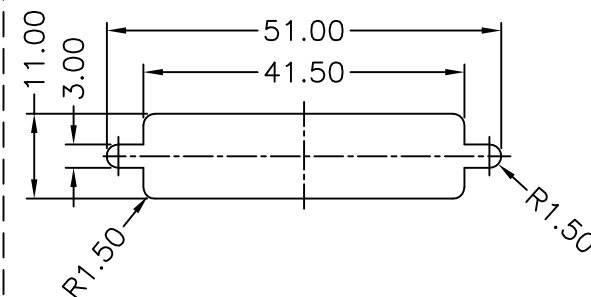


- * QC Important Dimension.
- * Waterproof Rate:IP68
IP68:1M of depth of water 24 hours
(防水等級:IP68)
(IP68:1 米水深24 小時)
- * Do Mating Test After Glued
點膠後, 須作對插測試
- * Housing:Nylon+GF,Black.
- * Connector:PBT,Black.
- * Female Pin:Copper Alloy,Gold Plated.
- * Ring:Silicone,Light Blue.
- * Screw:Copper Alloy,Nickel Plated,#4-40 UNC.
- * Applicable Wire Range:22AWG-26AWG.
適用電線範圍:22AWG-26AWG

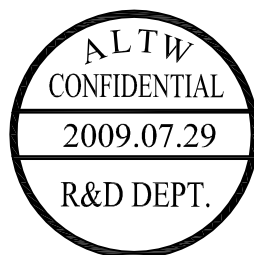


Screw L=5.0 For Panel Thickness
Under 1.2mm
適用板厚為1.2mm以下

Screw L=6.0 For Panel Thickness
Between 1.2~2.0mm
適用板厚為 1.2~2.0mm



Recommended Panel Cut-Out
建議挖孔尺寸



UNIT:mm				TITLE D-SUB Conn. Panel Screw DB25P F Conn. F Pin		<h1>Amphenol LTW</h1> <h2>安費諾亮泰企業股份有限公司</h2>		ITEM NO SDB-25PFFS-SL8001		DRAWN BY Vicky		DATE 2009/07/29	
TOLERANCE .X ±0.25 .XX ±0.1 .XXX ±0.05 ANGLES ±1°		SCALE Free		SHEET 1 OF 1				DWG NO SDB-25PFFS-SL8001		CHECKED BY Rita		DATE 2009/07/29	
REV. B		SIZE A4		QC :Inspection Item				CUSTOMER ALTW		APPROVED BY Luke		DATE 2009/07/29	

Mouser Electronics

Authorized Distributor

Click to View Pricing, Inventory, Delivery & Lifecycle Information:

[Amphenol:](#)

[SDB-25PFFS-SL8001](#)