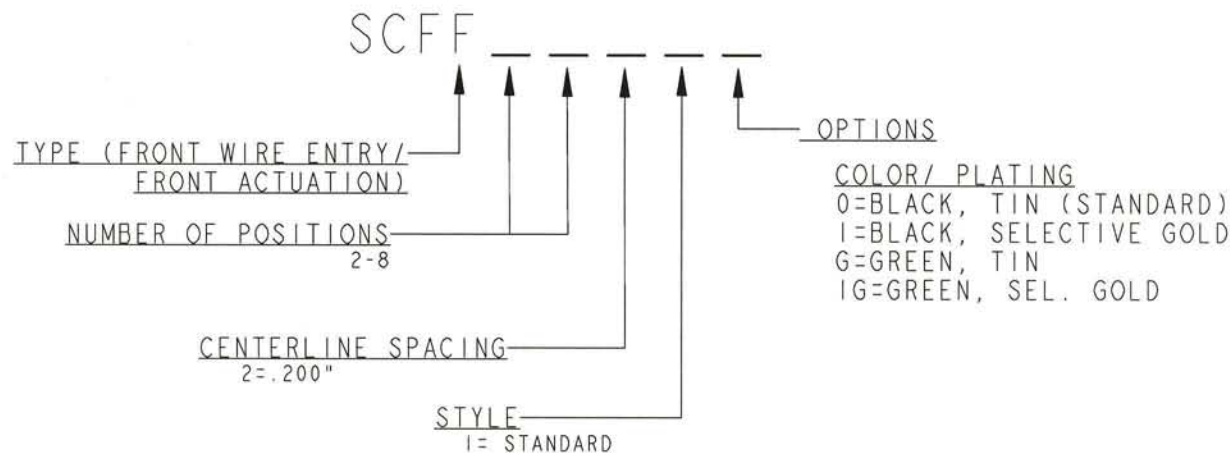


REV	ECN	APP'D
-	4503	10/31/01
A	5742	EN 12/28/05

## SCFF SERIES PART NUMBERING SCHEME



RATINGS

CURRENT - 15 A  
VOLTAGE - 300V  
U.L. FILE NO. PENDING



RATINGS

CURRENT - 15 A  
VOLTAGE - 300 V  
CSA FILE NO. PENDING

DIN VDE 0627:1986  
DIN VDE 0110-1:1989  
EN 60947-1:1991  
EN 60947-7-1:1992

CURRENT -15 A  
VOLTAGE - 300 V  
TUV FILE NO. PENDING

CONSULT PCD FOR PART NO. AND  
AVAILABILITY OF FOLLOWING OPTIONS:  
\*CUSTOM COLORS \*CUSTOM KEYING  
\*CUSTOM MARKING \*SELECTIVE CONTACT LOADING  
\*NUMBER OF POSITIONS 9-24

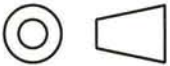
### INSTALLATION RECOMMENDATIONS:

WIRE RANGE: AWG #12-28, STRANDED OR SOLID,  
WIRE STRIP LENGTH: .250" (6,35mm)

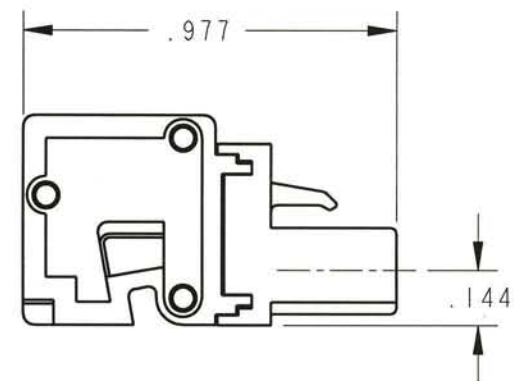
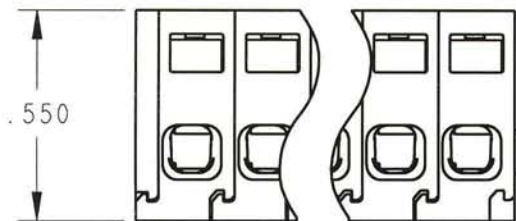
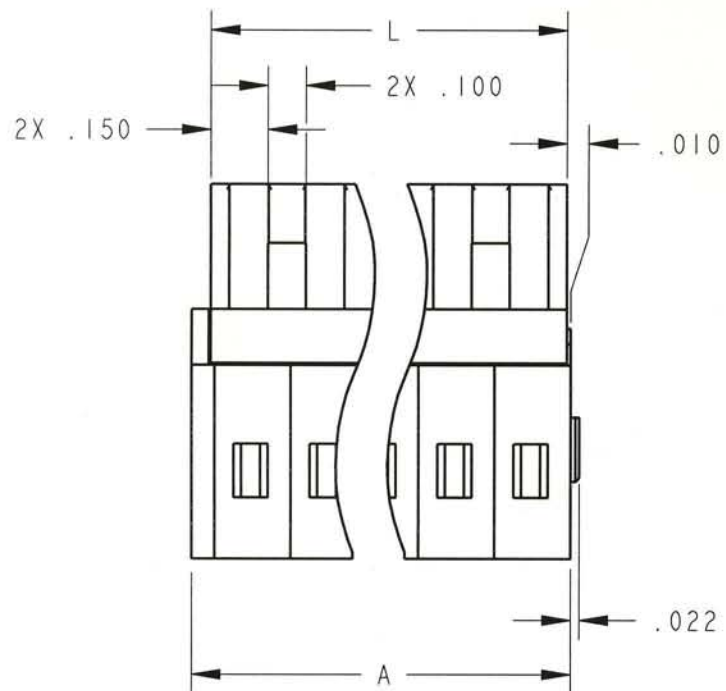
### MATERIALS:

HOUSING: PPO, UL 94 V-0  
CONTACT: PHOSPHOR BRONZE, TIN FINISH  
SPRING CLAMP: STAINLESS STEEL

MAX OPERATING TEMP: 105°C

<b>DIMENSIONS</b> ANSI Y14.5M UNITS: INCHES Pro/E FILE	<b>TOLERANCES</b> .XX ±0.01 .XXX ±0.005 ANGLES ±2.0°	<b>PROJECTION</b> 	<b>Amphenol Pcd</b> <div> ENGR C. LUSHUA 7/17/01 </div> <div> CHKD A. PATRIE 10/30/01 </div> <div> APPD I. QUINN 10/31/01 </div>		<b>TITLE</b> <div>SCF SERIES</div> <div>PLUGGABLE TERMINAL BLOCK</div>		
<b>ORIGINAL STAMPED IN RED</b>	THIS DOCUMENT CONTAINS PROPRIETARY INFORMATION WHICH IS THE CONFIDENTIAL PROPERTY OF AMPHENOL PCD, INC. PEABODY, MA, USA			<div> SIZE A </div> <div> CODE: 58982 </div>	<div> DWG NO. SCFF02210 </div> <div> SCALE: NONE </div>		<div> REV A </div> <div> SHEET 1 OF 2 </div>

L=NUM OF POS X CL SPACING
A=NUM OF POS X CL SPACING+.060



SIZE	DWG NO.	REV
A	SCFF02210	A
CODE: 58982	SCALE: NONE	SHEET 2 OF 2

# Mouser Electronics

Authorized Distributor

Click to View Pricing, Inventory, Delivery & Lifecycle Information:

[Amphenol:](#)

[SCFF06210](#) [SCFF05210](#) [SCFF03210](#) [SCFF07210](#) [SCFF02210](#) [SCFF08210](#)