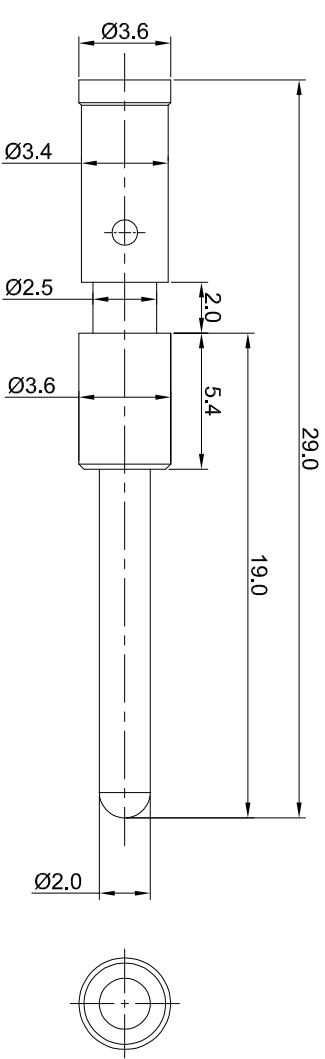
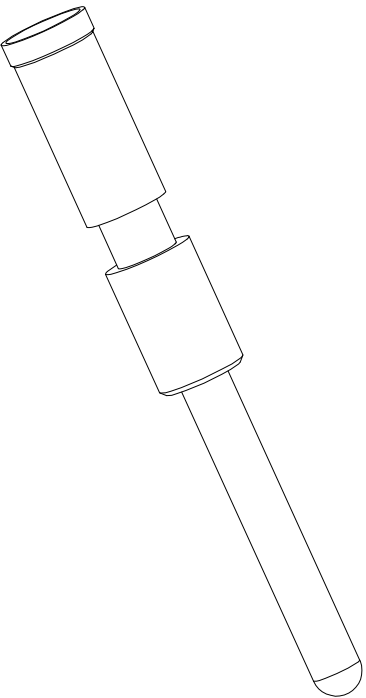
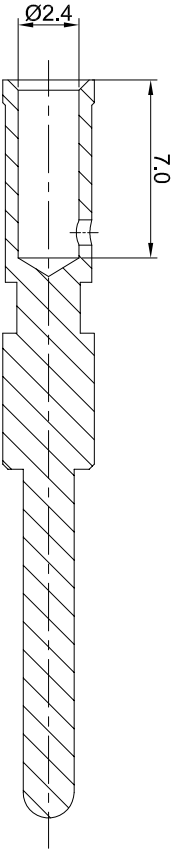


REVISIONS				
REV	ECO	DESCRIPTION	DATE	BY APPR
A1	-	RELEASED DRAWING	Jun.05.2018	White TOMMY



- NOTES: UNLESS OTHERWISE SPECIFIED
1. MATERIAL: COPPER ALLOY, GOLD PLATED
 2. SPECIFICATIONS:
 - 2.1 RATED CURRENT: 30 AMPS
 - 2.2 CONTACT RESISTANCE: <3 milliohm
 - 2.3 AVAILABLE WIRE RANGE: 14AWG~18AWG
 - 2.4 ROHS COMPLANT
 3. ALL DIMENSIONS ARE FOR REFERENCE USE ONLY.



QUANTITY		SEE PART NUMBER CHART		DESCRIPTION		ITEM
PART NUMBER		SIGNATURES		DATE		
UNLESS OTHERWISE SPECIFIED		DRAWN: WHe		Jun.05.2018		
1) All dimensions are in millimeters.		CHECKED: Tod		Jun.05.2018		
2) Tolerances are as follows:		DESIGNED: Tommy		Jun.05.2018		
3 PL DEC 20.15		APPROVAL: Tommy		Jun.05.2018		
3 PL DEC 20.08		CUTOMER:		Pin contact 2.0mm, Crimp 14~18AWG		
3) Note reference =		THIS DRAWING IS SUPPLIED FOR INFORMATION ONLY. DESIGN FEATURES, SPECIFICATIONS AND PERFORMANCE DATA ARE SUBJECT TO CHANGE WITHOUT NOTICE. THE APPLICABLE CORPORATION NO RIGHTS DIMENSIONS ARE SUBJECT TO NORMAL MANUFACTURING VARIATIONS.		SIZE: B		REVISION: A1
NEXT ASSTY:		SCALE: NONE		DWG NO: SC000463		

Mouser Electronics

Authorized Distributor

Click to View Pricing, Inventory, Delivery & Lifecycle Information:

[Amphenol:](#)

[SC000463](#)