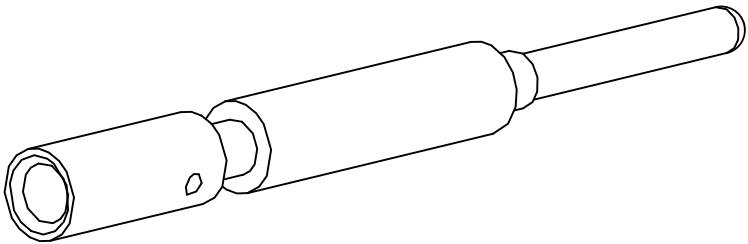
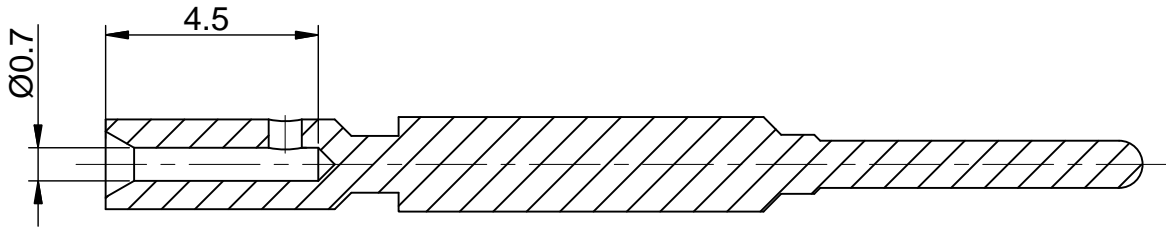
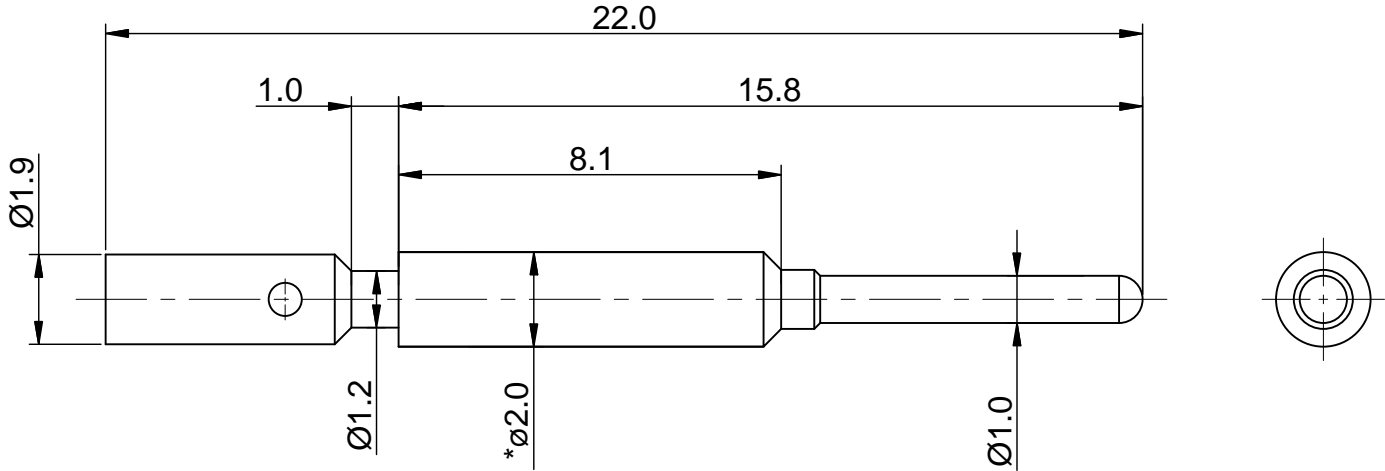


REVISIONS					
REV	ECO	DESCRIPTION	DATE	BY	APPR
A1	-	FIRST RELEASE	Mar.30,2016	DRACK	TOMMY



NOTES: UNLESS OTHERWISE SPECIFIED

1. MATERIAL: COPPER ALLOY, GOLD PLATED

2. SPECIFICATIONS:
- 2.1 RATED CURRENT: 10 AMPS
 - 2.2 CONTACT RESISTANCE: <5 milliohm
 - 2.3 AVAILABLE WIRE RANGE: 24AWG~28AWG
 - 2.4 RoHS COMPLIANT

3. ALL DIMENSIONS ARE FOR REFERENCE USE ONLY.

	SEE PART NUMBER			
	CHART			
QUANTITY	PART NUMBER	DESCRIPTION	ITEM	
MATERIALS LIST				
<div>UNLESS OTHERWISE SPECIFIED</div> <div>1) All dimensions are in metric(mm). 2) Tolerances are as follows: 1 PL DEC ±0.30 2 PL DEC ±0.15 3 PL DEC ±0.08</div> <div>3) Note reference = <div><div>X</div></div></div>		<div>SIGNATURES</div> <div>DRAWN: DRACK</div> <div>CHECKED:</div> <div>ENGINEER:</div> <div>APPROVAL:</div> <div>CUSTOMER:</div> <div>THIS DRAWING IS SUPPLIED FOR INFORMATION ONLY. DESIGN FEATURES, SPECIFICATIONS AND PERFORMANCE DATA SHOWN HEREON ARE THE PROPERTY OF THE AMPHENOL CORPORATION. NO RIGHTS OF REPRODUCTION ARE IMPLIED. ALL DIMENSIONS ARE SUBJECT TO NORMAL MANUFACTURING VARIATIONS.</div>	<div>DATE</div> <div>Mar.30,2016</div>	<div>Amphenol</div> <div>Sine Systems - www.amphenol-sine.com 44724 Morley Drive Clinton Township, MI 48036</div> <div>Pin contact,1.0mm,Crimp 24~28AWG</div>
<div>MATERIAL SPECIFICATIONS:</div>				
<div>PROCESS SPECIFICATIONS:</div>				
<div>NEXT ASSY:</div>				
		<div>SIZE</div> <div>B</div>	<div>TYPE</div> <div>C-</div>	
		<div>DWG NO:</div> <div>SC000386</div>	<div>REVISION</div> <div>A1</div>	
		<div>SCALE:</div> <div>NONE</div>	<div>SHEET</div> <div>1</div> <div>OF</div> <div>1</div>	

TITLE: Pin contact,1.0mm,Crimp 24-28AWG DWG NO: SC000386 REV: A1 SH: 1 OF: 1

Mouser Electronics

Authorized Distributor

Click to View Pricing, Inventory, Delivery & Lifecycle Information:

Amphenol:

[SC000386](#) [MA1EAE1900](#) [MA1EAP1900](#) [MA1JAE1900](#) [MA1JAP1900](#) [MA1LAE1600-KIT](#) [MA1LAE1600S-KIT](#)
[MB2LKNNG36](#) [SC000036-12](#) [MB1LLNNG36](#) [MB1RJNNG36](#) [MB2CKNNG36](#) [MB2GJNNG36](#) [65-80041](#)
[MB2JJNNG36](#) [MA1LAE1900](#) [MA1LAP1600-KIT](#) [MA1LAP1600S-KIT](#) [MB1CKNNG36](#) [MB1EJNNG36](#) [MB1JJNNG36](#)