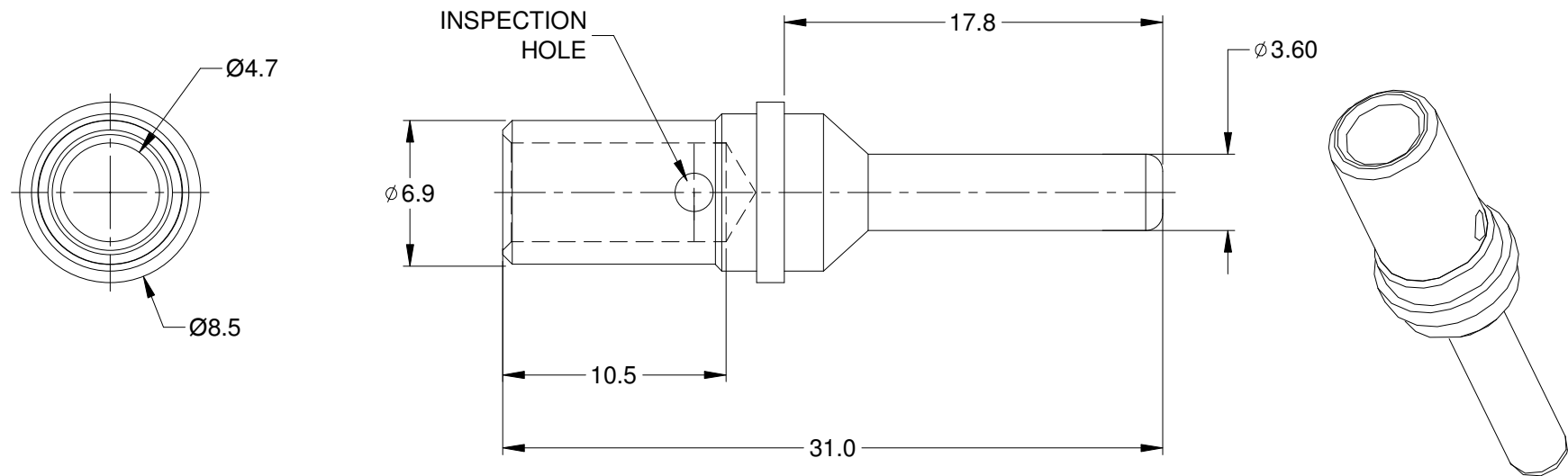


## REVISIONS

REV	ECO	DESCRIPTION	DATE	BY	APPR
A1		RELEASE NEW PRODUCT	03DEC15	ORION	TOMMY



## NOTES: UNLESS OTHERWISE SPECIFIED

1. MATERIAL: COPPER ALLOY; SILVER PLATED

2. CONTACT SIZE: 08

3. SPECIFICATIONS:

3.1 CURRENT RATING: 80 AMP

3.2 CONTACT MILLIVOLT DROP: 60 MILLIVOLT  
DROP @ 80 AMP TEST CURRENT.

3.3 ROHS COMPLIANT

4. RECOMMENDED WIRE RANGE: 07 - 10 AWG

5. AVAILABLE CRIMPER: WA23-DS

6. ALL DIMENSIONS ARE FOR REFERENCE USE ONLY

SC000345							
PART NUMBER		DESCRIPTION		ITEM			
QUANTITY	MATERIALS LIST						
UNLESS OTHERWISE SPECIFIED 1) All dimensions are in metric(mm). 2) Tolerances are as follows: 1 PL DEC ±0.30 2 PL DEC ±0.15 3 PL DEC ±0.08 3) Note reference =		SIGNATURES DRAWN: ORION LI CHECKED: ENGINEER: APPROVAL:	DATE 03DEC15	<h1>Amphenol</h1> <p>Sine Systems - www.amphenol-sine.com 44724 Morley Drive Clinton Township, MI 48036</p>			
MATERIAL SPECIFICATIONS:		CUSTOMER:			CONTACT, PIN, SOLID, 3.6MM 7-10 AWG, AHDP SERIES		
PROCESS SPECIFICATIONS:		THIS DRAWING IS SUPPLIED FOR INFORMATION ONLY. DESIGN FEATURES, SPECIFICATIONS AND PERFORMANCE DATA SHOWN HEREON ARE THE PROPERTY OF THE AMPHENOL CORPORATION. NO RIGHTS OF REPRODUCTION ARE IMPLIED. ALL DIMENSIONS ARE SUBJECT TO NORMAL MANUFACTURING VARIATIONS.		SIZE <b>A</b>		TYPE <b>C-</b>	DWG NO: <b>SC000345</b>
NEXT ASSY:		SCALE: NONE		SHEET 1 OF 1			

# Mouser Electronics

Authorized Distributor

Click to View Pricing, Inventory, Delivery & Lifecycle Information:

[Amphenol:](#)

[SC000345](#)